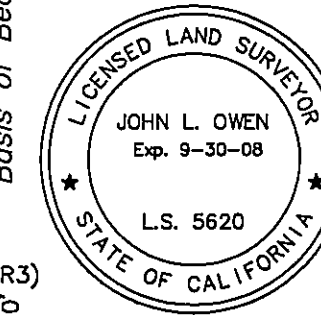


### Basis of Bearings

The Basis of Bearings of this map is the East line of the NE 1/4 of Section 1 shown as N00°10'01"W in Book 13 of Record of Surveys at page 47, Plumas County records.

### SURVEYOR'S STATEMENT

This map correctly represents a survey made by me or under my direction in conformance with the requirements of the Professional Land Surveyors' Act at the request of David Wade in July, 2007.



*John L. Owen*  
John L. Owen LS 5620

### COUNTY SURVEYOR'S STATEMENT

This map has been examined in accordance with Section 8766 of the Professional Land Surveyors' Act this 7<sup>th</sup> day of July, 2008.

*R Tom Shuster*  
PLUMAS COUNTY SURVEYOR  
RCF 30515

U.S.A.



Found BLM Brass Cap (R3)  
E 1/4 Corner Section 1  
Forest Service Boundary Sign  
S10°E, 2.8' (R3)

See Detail "A"

### RECORDER'S STATEMENT

Filed this 10<sup>th</sup> day of July, 2008 at 1:54 p.m. in Book 15 of Record of Surveys, at page 08-10, at the request of the County Surveyor.

Fee: \$12.00  
Kathleen Williams  
County Recorder  
By: *Kathleen Williams*  
Deputy

Document No. 2008-0004779

31 T 23 N  
6 T 22 N

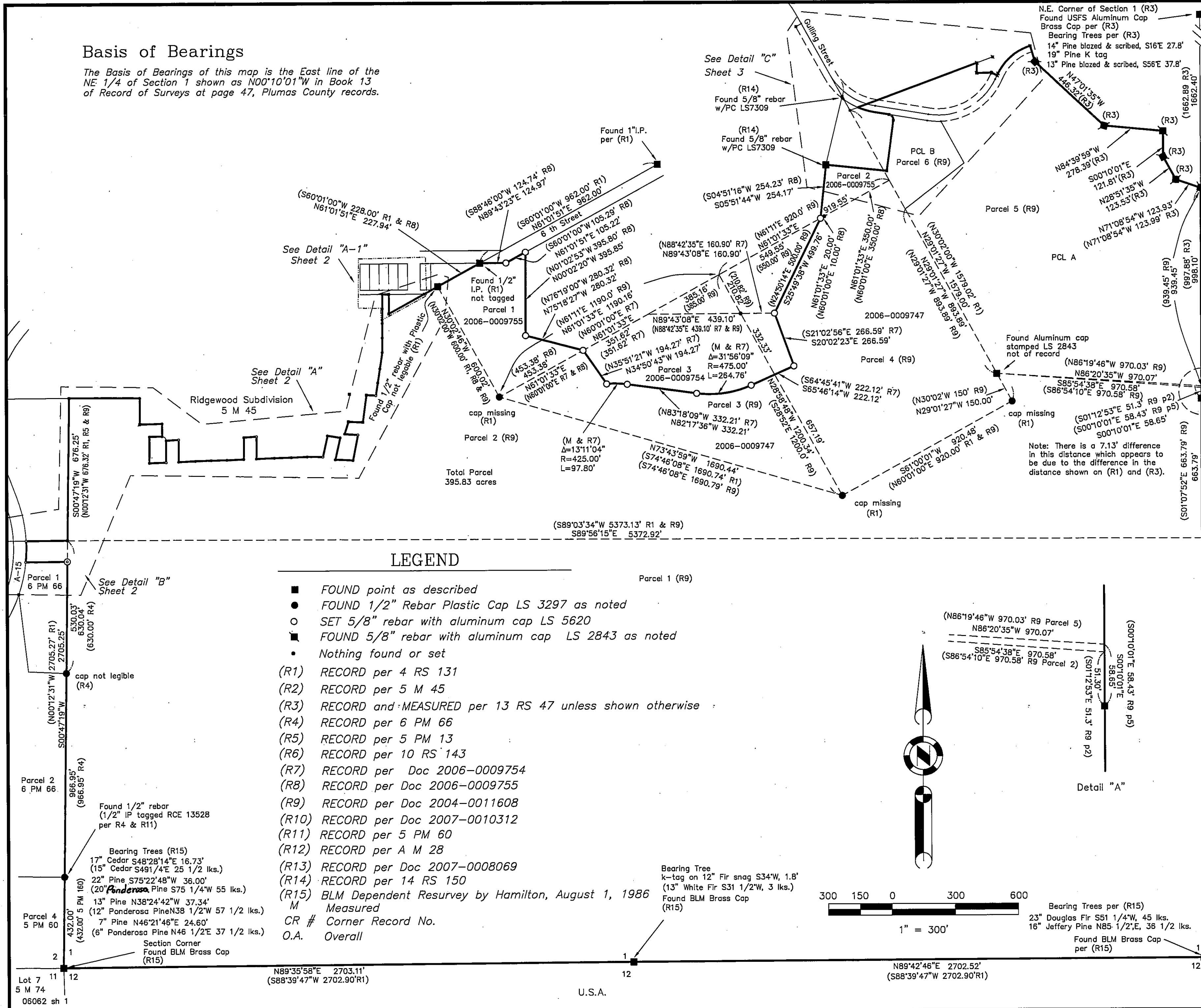
U.S.A.

### RECORD OF SURVEY for WOODBIDGE AT PORTOLA, INC.

A portion of Section 1  
T. 22 N., R. 13 E., M.D.M.  
Plumas County ~ California  
Scale 1" = 300' September, 2007

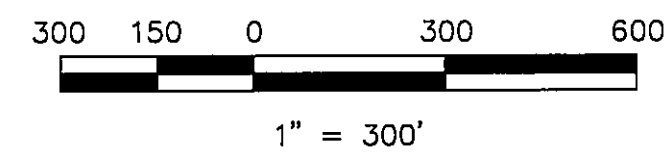
Hamby Surveying Inc.  
P.O. Box 1209  
Portola, CA 96122  
(530) 832-5571

SHEET 1 OF 3

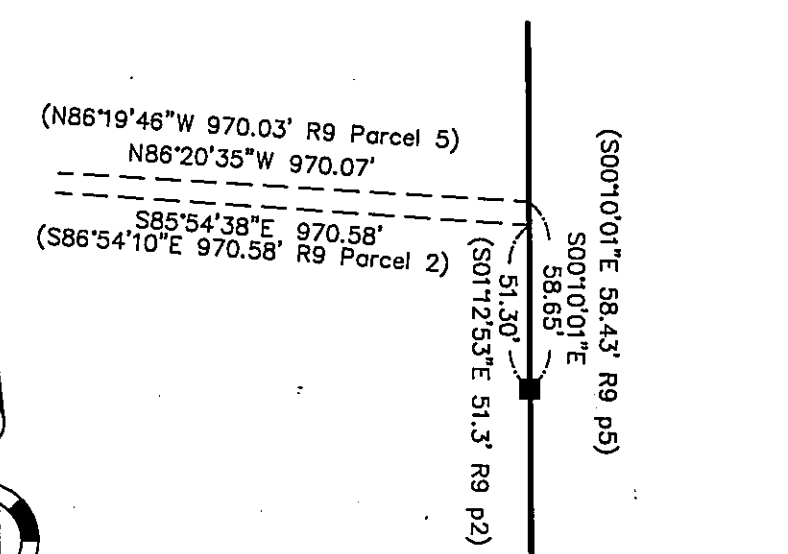


### LEGEND

- FOUND point as described
  - FOUND 1/2" Rebar Plastic Cap LS 3297 as noted
  - SET 5/8" rebar with aluminum cap LS 5620
  - FOUND 5/8" rebar with aluminum cap LS 2843 as noted
  - Nothing found or set
- (R1) RECORD per 4 RS 131  
 (R2) RECORD per 5 M 45  
 (R3) RECORD and MEASURED per 13 RS 47 unless shown otherwise  
 (R4) RECORD per 6 PM 66  
 (R5) RECORD per 5 PM 13  
 (R6) RECORD per 10 RS 143  
 (R7) RECORD per Doc 2006-0009754  
 (R8) RECORD per Doc 2006-0009755  
 (R9) RECORD per Doc 2004-0011608  
 (R10) RECORD per Doc 2007-0010312  
 (R11) RECORD per 5 PM 60  
 (R12) RECORD per A M 28  
 (R13) RECORD per Doc 2007-0008069  
 (R14) RECORD per 14 RS 150  
 (R15) BLM Dependent Resurvey by Hamilton, August 1, 1986  
 M Measured  
 CR # Corner Record No.  
 O.A. Overall



Detail "A"



Lot 7 11  
5 M 74  
06062 sh 1

N89°35'58"E 2703.11'  
(S88°39'47"W 2702.90'R1)

U.S.A.

N89°42'46"E 2702.52'  
(S88°39'47"W 2702.90'R1)

12