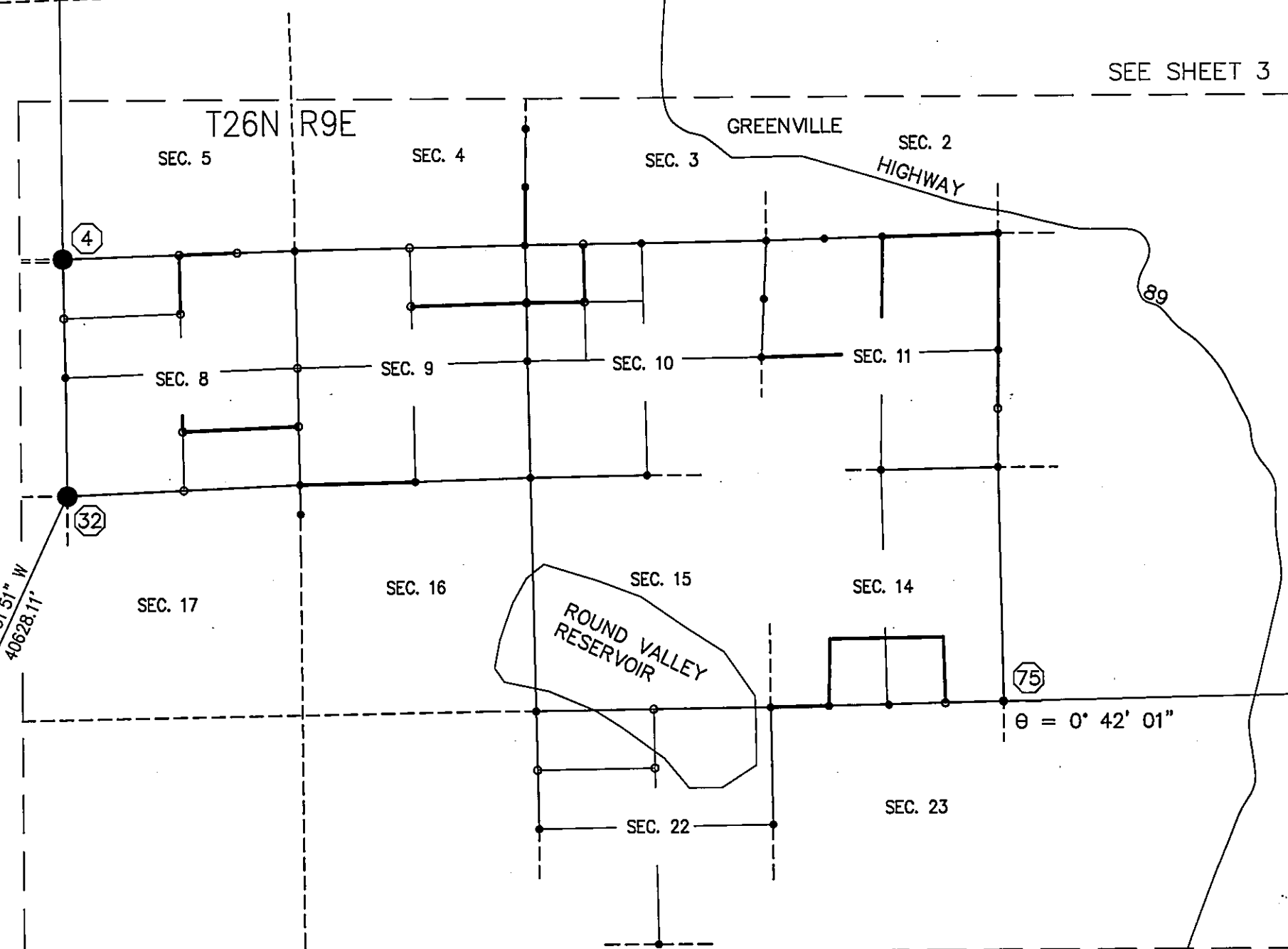
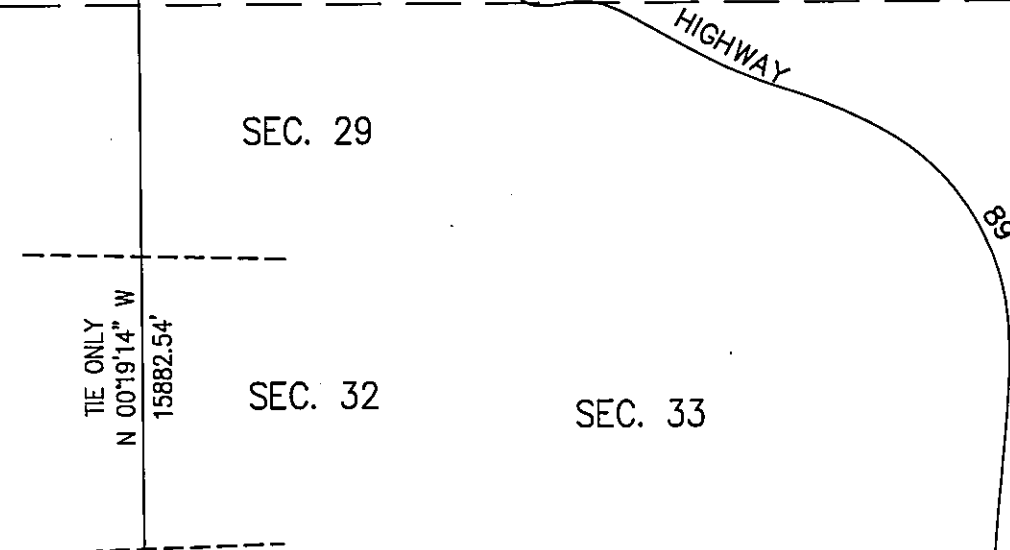
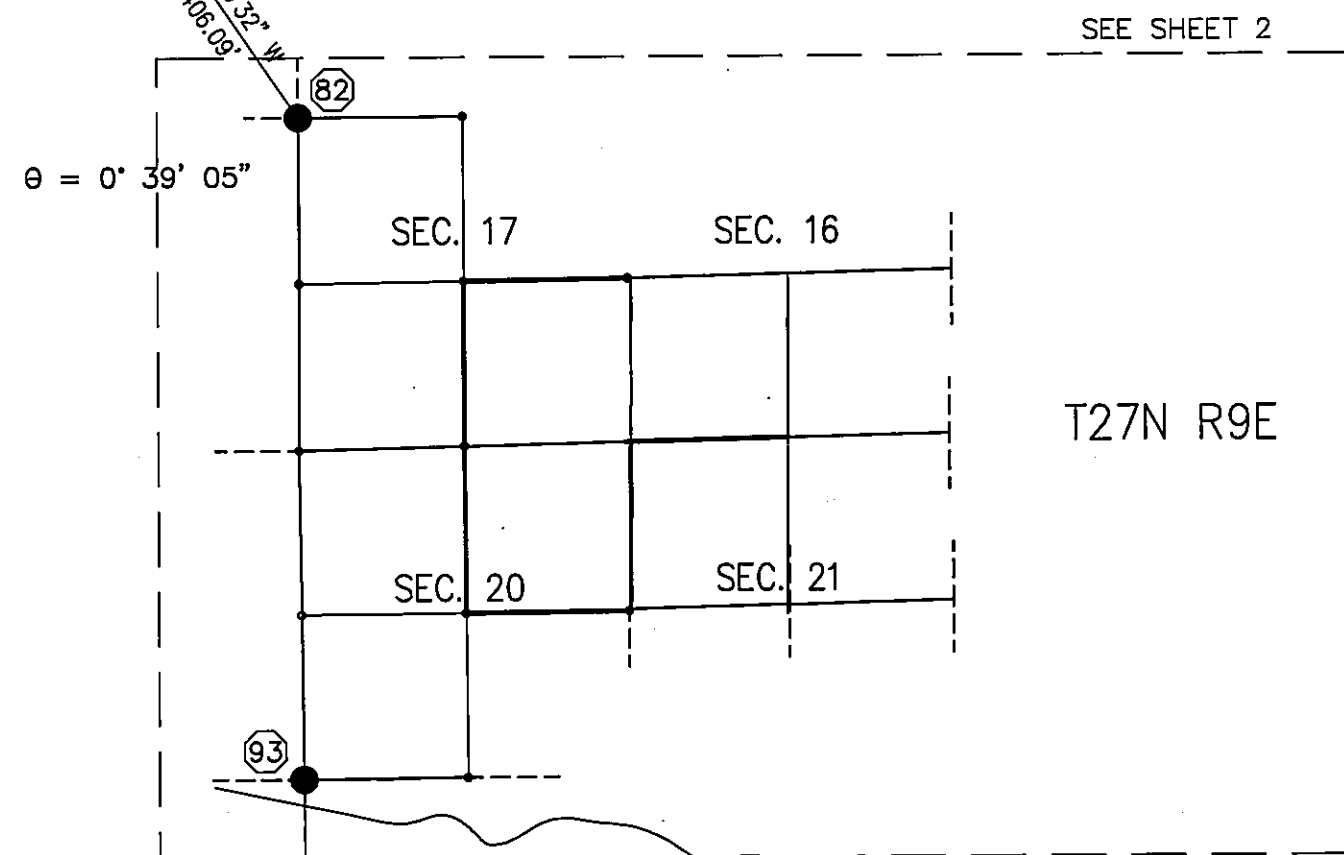


NGS POINT "DYER"
EPOCH DATE: 2007.00
N 1,971,955.54
E 6,831,737.77
PID No. LT0652



NGS POINT
HPGN D CA 02 DS
EPOCH DATE: 2007.00
N 1,891,373.24
E 6,823,021.49
PID No. LT0652

0 1500 3000 6000 9000 12000 FEET



BASIS OF BEARINGS

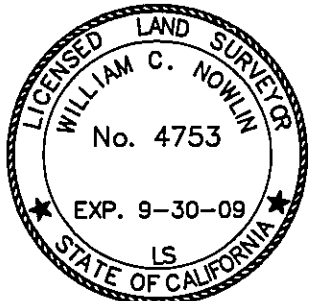
CALIFORNIA ZONE 1, NAD 83 GRID BEARINGS
DERIVED FROM FAST STATIC G.P.S.
OBSERVATIONS.
EPOCH DATE: 2007.00
MAPPING ANGLES SHOWN AT CORNER NUMBERS
75 AND 82.
ALL DISTANCES SHOWN AS MEASURED ARE GRID
DISTANCES. TO CONVERT TO GROUND, DIVIDE
DISTANCES SHOWN BY 0.999767.

LEGEND

- SET MONUMENT - SEE CORNER NOTES
- FOUND CORNER - SEE CORNER NOTES
- (XX) CORNER NUMBER
- () RECORD PER 6 PM 26

SURVEYOR'S STATEMENT

THIS MAP CORRECTLY REPRESENTS A SURVEY MADE
BY ME OR UNDER MY DIRECTION IN CONFORMANCE
WITH THE REQUIREMENTS OF THE PROFESSIONAL
LAND SURVEYORS' ACT AT THE REQUEST OF THE
US FOREST SERVICE IN SEPTEMBER, 2007



SIGNED William C. Nowlin
WILLIAM C. NOWLIN L.S. 4753

COUNTY SURVEYOR'S STATEMENT

THIS MAP HAS BEEN EXAMINED IN
ACCORDANCE WITH SECTION 8766 OF THE
PROFESSIONAL LAND SURVEYORS' ACT
THIS 17th DAY OF July, 2009

SIGNED R. Tom Hunter
TOM HUNTER R.C.E. 30515
PLUMAS COUNTY SURVEYOR
REG. EXP. 3/31/2010

COUNTY RECORDER'S STATEMENT

FILED THIS 23rd DAY OF July, 2009
AT 10:52 AM., IN BOOK 15 OF RECORD OF
SURVEYS AT PAGE(S) 38-45, AT THE REQUEST
OF THE PLUMAS COUNTY SURVEYOR.

PLUMAS COUNTY RECORDER
KATHLEEN WILLIAMS

BY Judy Marrow
DEPUTY

FEE \$22.00 DOC.#2009-0005156

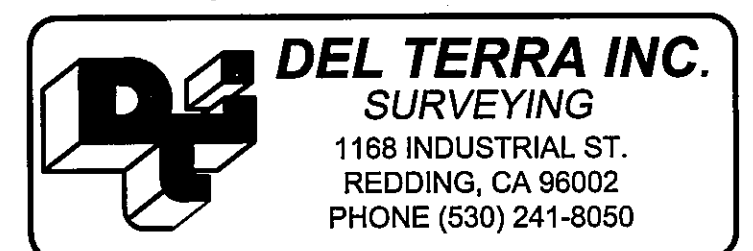
RECORD OF SURVEY

FOR

USDA FOREST SERVICE
PLUMAS NATIONAL FOREST

"KEDDIE"

IN SECTIONS 3, 8, 9, 10, 11, 15, 16 AND 22,
T 26 N, R 9 E, MDM, AND IN SECTIONS 17
AND 20, T 27 N, R 9 E, MDM,
IN THE UNINCORPORATED AREA OF
PLUMAS COUNTY,
STATE OF CALIFORNIA



SCALE: 1" = 3000' DATE: NOVEMBER, 2008
SHEET 1 OF 8