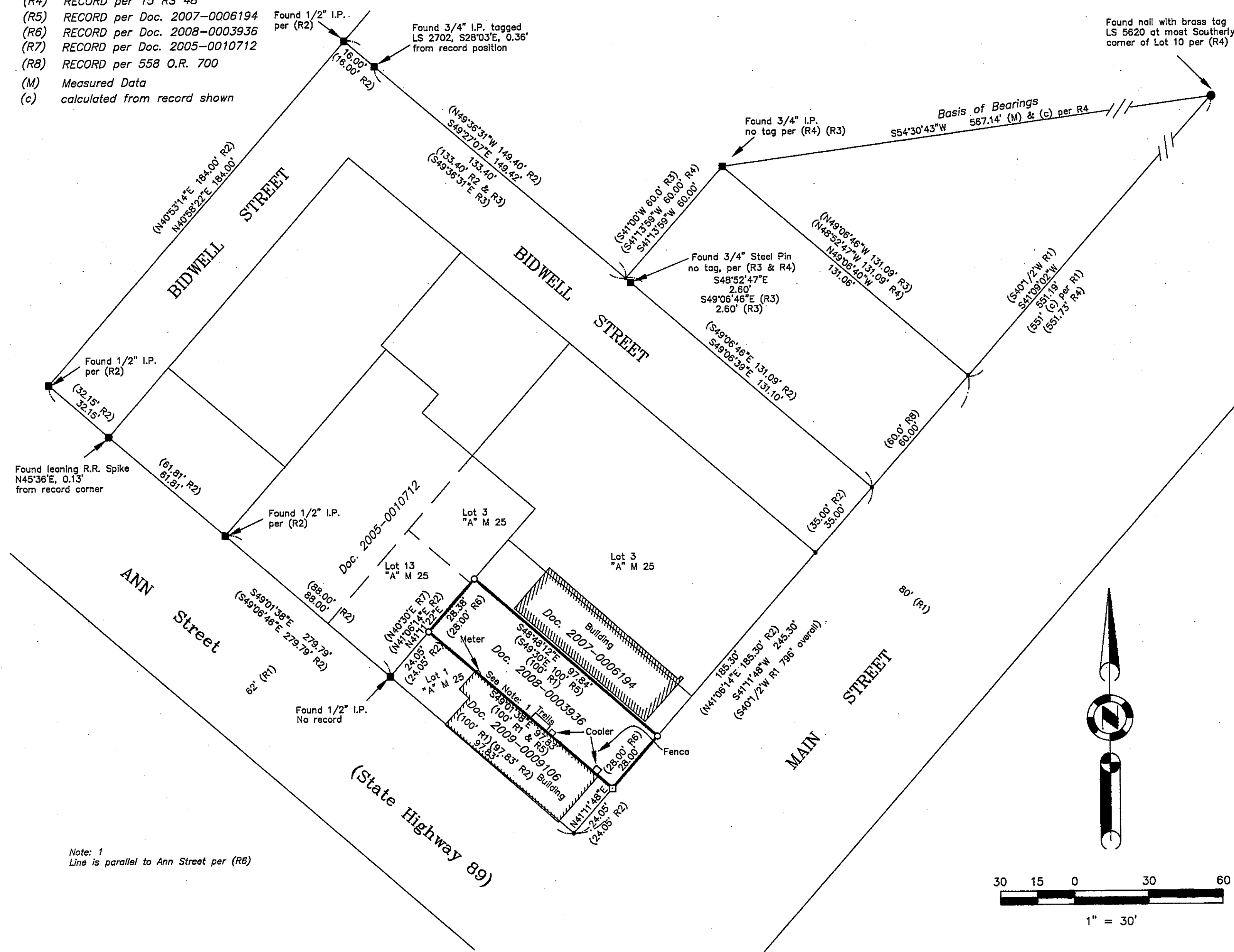


LEGEND

- FOUND: point as described
- SET Nail w/ Brass Tag LS 5620
- SET 5/8" Rebar with Aluminum Cap LS 5620
- nothing found or set, calculated point
- (R1) RECORD per "A" Maps 25
- (R2) RECORD per 2 RS 108
- (R3) RECORD per 3 RS 147
- (R4) RECORD per 15 RS 48
- (R5) RECORD per Doc. 2007-0006194
- (R6) RECORD per Doc. 2008-0003936
- (R7) RECORD per Doc. 2005-0010712
- (R8) RECORD per 558 O.R. 700
- (M) Measured Data
- (c) calculated from record shown

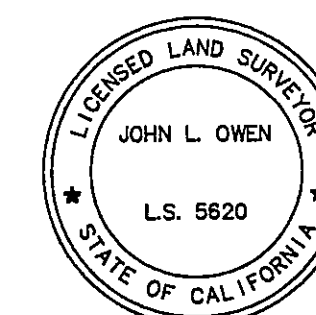
BASIS OF BEARINGS

The Basis of Bearings of this map is the measured bearing between found monuments as shown, being S54°30'43"W as shown on that certain Record of Survey filed in Book 15 of Records of Survey at Page 48, Plumas County records.



SURVEYOR'S STATEMENT

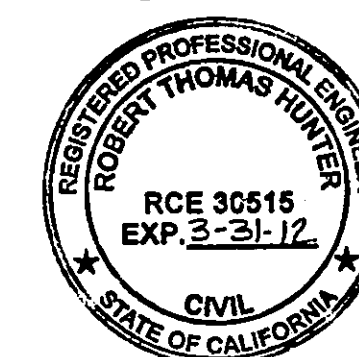
This map correctly represents a survey made by me or under my direction in conformance with the requirements of the Professional Land Surveyors' Act at the request of Eric A. Carlson in April, 2010.



John L. Owen
John L. Owen LS 5620

COUNTY SURVEYOR'S STATEMENT

This map has been examined in accordance with Section 8766 of the Professional Land Surveyors' Act this 29th day of July, 2010.



R. Tom Hunter
R. Tom Hunter RCE 30515
PLUMAS COUNTY SURVEYOR

RECORDER'S STATEMENT

Filed this 4th day of August, 2010 at 3:08 p.m. in Book 15 of Record of Surveys, at page 59, at the request of the County Surveyor.

Fee: \$8.00

Document No. 2010-0004489

Kathleen Williams
County Recorder

By: *Aura L. Davis*
Deputy

RECORD OF SURVEY
for

Eric Carlson,
Trustee of the Eric A. Carlson
Revocable Trust dated May, 2002

A portion of Lots 2 & 3, "A" Maps 25 and
situate in the Northeast 1/4 of Section 3
Township 26 North, Range 9 East, M.D.M.

Plumas County ~ California
Scale 1" = 30' April, 2010

Hamby Surveying Inc.
P.O. Box 1209
Portola, CA 96122
(530) 832-5571

SHEET 1 OF 1