

BASIS OF BEARING:

THE EAST LINE OF THE SOUTH EAST 1/4 OF THE NORTH WEST 1/4 SECTION 22 TOWNSHIP 25 NORTH RANGE 9 EAST MOUNT DIABLO MERIDIAN SHOWN AS S 02°17'57" W IN BOOK 13 OF RECORDS OF SURVEYS AT PAGE 123 IS THE BASIS OF BEARING SHOWN ON THIS MAP.

NOTES:

1. THIS 45 FOOT WIDE EASEMENT WAS ESTABLISHED FROM THE DESCRIBED CENTERLINE PER 120 O.R. 74 (F), WESTERLY 122 FEET (N 86°17'23" E, 122') AND SOUTHERLY 105 FEET (S 01°30'04" E, 105') ALONG THE CENTER OF SECTION LINES WITH A RADIUS OF 202.5 FEET, USING THE LOCATION FOR THE CENTER OF SECTION SHOWN ON THE CALIFORNIA DIVISION OF HIGHWAY MAP (A), CORNER NOTE [8] AND [9] - THE SIDELINES OF SAID EASEMENT SHOWN HEREON HAVE BEEN SHORTENED OR EXTENDED TO INTERSECT THE EAST LINE OF RESULTANT PARCEL 1. THIS DEFINITION ENCOMPASSES THE EXISTING ROAD DESCRIBED (F).

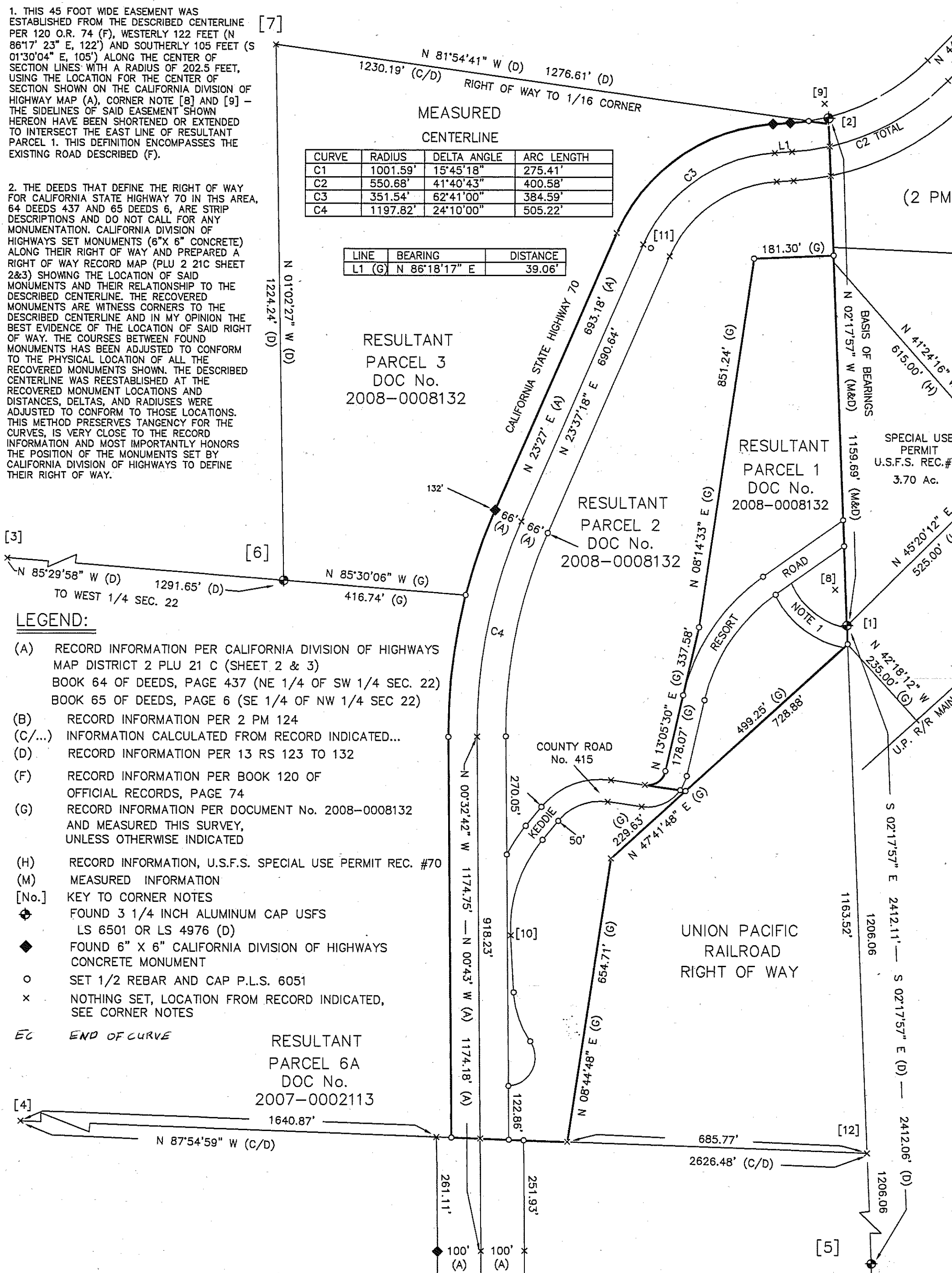
2. THE DEEDS THAT DEFINE THE RIGHT OF WAY FOR CALIFORNIA STATE HIGHWAY 70 IN THIS AREA, 64 DEEDS 437 AND 65 DEEDS 6, ARE STRIP DESCRIPTIONS AND DO NOT CALL FOR ANY MONUMENTATION. CALIFORNIA DIVISION OF HIGHWAYS SET MONUMENTS (6" X 6" CONCRETE) ALONG THEIR RIGHT OF WAY AND PREPARED A RIGHT OF WAY RECORD MAP (PLU 2 21C SHEET 2&3) SHOWING THE LOCATION OF SAID MONUMENTS AND THEIR RELATIONSHIP TO THE DESCRIBED CENTERLINE. THE RECOVERED MONUMENTS ARE WITNESS CORNERS TO THE DESCRIBED CENTERLINE AND IN MY OPINION THE BEST EVIDENCE OF THE LOCATION OF SAID RIGHT OF WAY. THE COURSES BETWEEN FOUND MONUMENTS HAS BEEN ADJUSTED TO CONFORM TO THE PHYSICAL LOCATION OF ALL THE RECOVERED MONUMENTS SHOWN. THE DESCRIBED CENTERLINE WAS REESTABLISHED AT THE RECOVERED MONUMENT LOCATIONS AND DISTANCES, DELTAS, AND RADII WERE ADJUSTED TO CONFORM TO THOSE LOCATIONS. THIS METHOD PRESERVES TANGENCY FOR THE CURVES, IS VERY CLOSE TO THE RECORD INFORMATION AND MOST IMPORTANTLY HONORS THE POSITION OF THE MONUMENTS SET BY CALIFORNIA DIVISION OF HIGHWAYS TO DEFINE THEIR RIGHT OF WAY.

Table with 4 columns: CURVE, RADIUS, DELTA ANGLE, ARC LENGTH. Rows C1, C2, C3, C4.

Table with 3 columns: LINE, BEARING, DISTANCE. Row L1 (G).

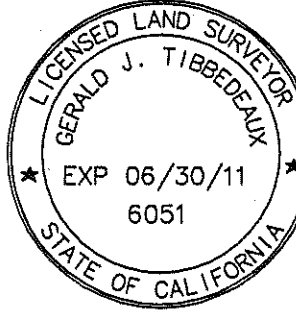
LEGEND:

- (A) RECORD INFORMATION PER CALIFORNIA DIVISION OF HIGHWAYS MAP DISTRICT 2 PLU 21 C (SHEET 2 & 3) BOOK 64 OF DEEDS, PAGE 437 (NE 1/4 OF SW 1/4 SEC. 22) BOOK 65 OF DEEDS, PAGE 6 (SE 1/4 OF NW 1/4 SEC 22)
(B) RECORD INFORMATION PER 2 PM 124
(C/...) INFORMATION CALCULATED FROM RECORD INDICATED...
(D) RECORD INFORMATION PER 13 RS 123 TO 132
(F) RECORD INFORMATION PER BOOK 120 OF OFFICIAL RECORDS, PAGE 74
(G) RECORD INFORMATION PER DOCUMENT No. 2008-0008132 AND MEASURED THIS SURVEY, UNLESS OTHERWISE INDICATED
(H) RECORD INFORMATION, U.S.F.S. SPECIAL USE PERMIT REC. #70
(M) MEASURED INFORMATION
[No.] KEY TO CORNER NOTES
◆ FOUND 3 1/4 INCH ALUMINUM CAP USFS LS 6501 OR LS 4976 (D)
◆ FOUND 6" X 6" CALIFORNIA DIVISION OF HIGHWAYS CONCRETE MONUMENT
○ SET 1/2 REBAR AND CAP P.L.S. 6051
× NOTHING SET, LOCATION FROM RECORD INDICATED, SEE CORNER NOTES
EC END OF CURVE



CORNER NOTES

- THE SOUTH 1/4 CORNER, THE CENTER 1/4 CORNER, THE WITNESS CORNER TO THE SE. CORNER OF THE NE. 1/4 OF THE NW 1/4, AND THE SOUTHEAST CORNER OF THE SW. 1/4 OF THE NW 1/4, OF SECTION 22 WERE RECOVERED AS A PART OF THIS SURVEY. THE BEARING TREES AND OBJECTS REPORTED AT THOSE LOCATIONS WERE CHECKED AND WERE AS REPORTED PER (D).
THE MONUMENTS AT THE WEST 1/4 CORNER OF SECTION 22 [3], THE SOUTH 1/16 CORNER, SECTIONS 21 AND 22 [4], AND THE NORTHWEST 1/16 CORNER OF SECTION 22 [7], WERE NOT RECOVERED AS A PART OF THIS SURVEY. THE LOCATION SHOWN IS ESTABLISHED FROM RECORD PER (D).
[1] CENTER 1/4 CORNER SECTION 22, FOUND A STANDARD 3 1/4 INCH USFS ALUMINUM CAP MARKED LS 6501, C 1/4-S22, 2005 (D) FROM WHICH:
EASTERLY CORNER OF WELL HOUSE BEARS S 37-30 W, A DISTANCE OF 15.0 FEET (D&M)
SOUTHERLY CORNER OF WELL HOUSE BEARS S 87-30 W, A DISTANCE OF 17.2 FEET (D&M)
PINK MAGNET, 10 INCHES DEEP S 14 1/2° E, A DISTANCE OF 8.4 FEET (D) NOT RECOVERED THIS SURVEY
BLUE MAGNET, 10 INCHES DEEP S 72 1/2° W, A DISTANCE OF 7.0 FEET (D) NOT RECOVERED THIS SURVEY
[2] WITNESS CORNER CENTER NORTH 1/16 SECTION 22, FOUND A STANDARD 3 1/4 INCH USFS ALUMINUM CAP MARKED LS 6501, W.C., N 1/16, C/C, S 22, 2005 FOR A WITNESS CORNER ON LINE 13.00 FEET NORTHERLY ON CENTER OF SECTION LINE (D) FROM WHICH:
7 INCH DOUGLAS FIR BEARS S 41-30 W, A DISTANCE OF 9.6 FEET (D&M)
12 INCH DOUGLAS FIR BEARS N 63-30 W, A DISTANCE OF 18.4 FEET (D&M)
[3] 1/4 CORNER SECTIONS 21 AND 22 T25N R9E (D) MONUMENT NOT RECOVERED ON THIS SURVEY, LOCATION SHOWN ESTABLISHED FROM RECORD (D)
[4] SOUTH 1/16, SECTION 21 & 22, T. 25N., R. 9E (D) MONUMENT NOT RECOVERED ON THIS SURVEY, LOCATION SHOWN ESTABLISHED FROM RECORD (D)
[5] 1/4 CORNER SECTION 22-27 FOUND A STANDARD USFS 3 1/4 INCH ALUMINUM CAP MARKED LS 4976, 1/4 S22/27, 1987 BURIED 6 INCHES UNDER THE GROUND (D) FROM WHICH:
13 INCH BLACK OAK BEARS S 19 E, DISTANCE NOT MEASURED (D&M)
A LARGE BLACK OAK STUMP BEARS N 84 W, A DISTANCE OF 13.7 FEET (D&M)
[6] CENTER WEST 1/16 CORNER SECTION 22 FOUND A STANDARD 3 1/4 INCH USFS ALUMINUM CAP MARKED LS 6501, W 1/16, C/C, S 22, 2005 (D) FROM WHICH:
13 INCH OAK BEARS N 15-30 E, A DISTANCE OF 15.4 FEET (D&M)
7 INCH FIR BEARS N 31-30 W, A DISTANCE OF 11.5 FEET (D&M)
[7] NORTHWEST 1/16 CORNER SECTION 22, (D) MONUMENT NOT RECOVERED ON THIS SURVEY, LOCATION SHOWN ESTABLISHED FROM RECORD (D)
[8] CENTER 1/4 CORNER SECTION 22, (SOUTHEAST CORNER OF KEDDIE) LOCATION CALCULATED FROM (A) CALIFORNIA DIVISION OF HIGHWAYS MAP DISTRICT 2 PLU 21C S 86°34' E 760.12 FROM STATION "D2" 56+00.13 POC (A) S 86°17'23" E 760.12 FROM STATION "D2" 56+00.13 POC (C/A) POSITION IS N 18°09'42" W, A DISTANCE OF 86.05 FEET FROM CENTER 1/4 MONUMENT [1]
[9] NE COR., SE1/4, NW 1/4, SEC. 22, (ON 1/16) (NORTHEAST CORNER OF KEDDIE) LOCATION CALCULATED FROM (A) CALIFORNIA DIVISION OF HIGHWAYS MAP DISTRICT 2 PLU 21C N 01°41'40" W 99.81 FROM STATION "Y2" 43+18.06 POC (A) N 01°30'04" W 99.81 FROM STATION "Y2" 43+18.06 POC (C/A) POSITION IS N 15°46'39" W, A DISTANCE OF 34.54 FEET FROM WITNESS CORNER MONUMENT [2]
[10] NOTHING SET AT LOCATION SHOWN, SET NAIL AND TAG P.L.S. 6051 IN 4 INCH OAK AS WITNESS S 10°58'17" W, A DISTANCE OF 0.16 FEET.
[11] SET 1/2 INCH REBAR AND CAP P.L.S. 6051, AS WITNESS CORNER, FROM WHICH PROPERTY LINE AND RIGHT OF WAY EC BEARS N 66°22'42" W, A DISTANCE OF 85.00 FEET.
[12] THE CENTER SOUTH 1/16 CORNER OF SECTION 22 WAS NOT SET ON THIS SURVEY, THE LOCATION SHOWN WAS ESTABLISHED AS SHOWN BETWEEN THE RECOVERED CENTER AND SOUTH 1/4 CORNER MONUMENTS



SURVEYOR'S STATEMENT

THIS MAP CORRECTLY REPRESENTS A SURVEY MADE BY ME OR UNDER MY DIRECTION IN CONFORMANCE WITH THE REQUIREMENTS OF THE PROFESSIONAL LAND SURVEYORS' ACT AT THE REQUEST OF KEDDIE INVESTMENTS LLC. IN AUGUST 2009.

Gerald Joseph Tibbodeaux
GERALD JOSEPH TIBBODEAUX P.L.S. 6051
LICENSE EXPIRES 6-30-11

COUNTY SURVEYOR'S STATEMENT

THIS MAP HAS BEEN EXAMINED IN ACCORDANCE WITH SECTION 8766 OF THE PROFESSIONAL LAND SURVEYORS' ACT THIS 30 DAY OF March 2011.

R. Tom Hunter
R. TOM HUNTER R.C.E. 30515
PLUMAS COUNTY SURVEYOR
LICENSE EXPIRES 3-31-12

COUNTY RECORDER'S STATEMENT

FILED THIS 9 DAY OF March, 2011 AT 2:05 P. M. IN BOOK 15 OF RECORDS OF SURVEYS, AT PAGE 73-74 AT THE REQUEST OF THE COUNTY SURVEYOR.

COUNTY RECORDER

BY: Laura Foster DEPUTY

FEE: \$10.00

DOCUMENT No. 2011-0001416

PURPOSE OF SURVEY:

THIS SURVEY IS FOR THE MONUMENTATION OF RESULTANT PARCELS 1 AND 2, OF LOT LINE ADJUSTMENT DOCUMENT No. 2008-0001832.

RECORD OF SURVEY FOR KEDDIE INVESTMENTS LLC

RESULTANT PARCELS 1 AND 2
DOCUMENT NUMBER 2008-0008132
WITHIN THE WEST 1/2 OF SECTION 22, T. 25N., R. 9E., M.D.M.
PLUMAS COUNTY CALIFORNIA

1 INCH = 200 FEET

AUGUST 2009

Tibbodeaux Surveying
P.O. Box 1960 - 565 Ridge St.
Portola, CA 96122
(530) 832-5772
Job 2009-03 / 2009-08

SHEET 1 OF 2