

SURVEYOR'S NOTES

- 2-1 Purpose of this survey is to publish California Coordinates for CALTRANS ROW, ROW Centerline, and Project Control Monuments from the "Caribou Curve" Safety Project" (EA: 02-2E000)
- 2-2 Distances and Coordinates are expressed in Grid US Feet unless otherwise noted. Divide Grid Distances by Combined Grid Factor (CGF) of 0.9998871 to obtain Ground Distances. Multiply US Feet Values by 1200/3937 to convert to Meters.
- 2-3 Bearings, distances, and coordinates are based on the California Coordinate System of 1983, Zone 2, Epoch 2004.69 - CCS83 (2004.69) Zone 2. Coordinates provided were generated from ties to the California High Accuracy Reference Network (HARN) pursuant to Section 8813.2 of California Resources Code.
- 2-4 Coordinates for Monuments: GPS 15.30, GPS 16.54, GPS 17.17, GPS 18.16 are from Static GPS Surveys performed by Caltrans in March 2009 for Caltrans Project EA: 02-2E000. Said GPS Survey constrained by HARN Monuments: Maggie, Clappe, and HPN-D CA 02-CR
- 2-5 Observed coordinates for found PLSS Monuments CC16-1 and CC19-1 and for found Control Monuments: CM 16-3, CM 17-1, CM 17-2, CM 17-5, CM 17-6 from Landnet Survey pursuant to Caltrans Survey Request SR:2009-028/EA:02-2E000
- 2-6 Control Monuments: CM 16.02, CM 16.13, CM 16.77, CM 17.00, CM 17.09, CM 17.58, CM 17.82 and CM 18.09 set per Caltrans Survey Request SR:2008-395/EA:02-3C300
- 2-7 This Survey and Map Shows ROW per sheet 50 of 120 of Exhibit "A" of the 2009 DOT Easement obtained from US Forest Service per Doc No. 2011-0006959
- 2-8 Measured Bearing and Distance and Curve Data shown for ROW Centerline were calculated as a "Best-Fit" using Found Monuments and Record Right-of-Way Data.
- 2-9 RW Monuments and Control Monuments CM 17.25, CM 17.28, CM 17.38 and CM 17.43 were set per Caltrans Survey Request SR:2011-161/EA:02-2E000
- 2-10 Additional information may be obtained from the Caltrans North Region Office of Surveyors (NROS) in the project files for EA: 02-2E000

Convergence Angles (γ) and GPS Derived Ellipsoid Heights (h) for Monuments as shown are from a Caltrans GPS Survey Adjustment for "Caribou Curve" project EA: 02-2E000 per SR:2009-015 as shown on 15 ROS 80

CM 17.17 GPS
 γ = +00°30'45"
 CGF = 0.9998871
 h = 2283.4 ft



CURVE DATA

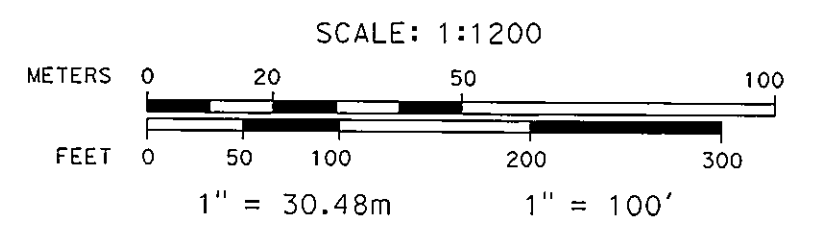
No.	R	Δ	L
(1)	[400.00']	[132°38'55"]	[926.06']
(2)	[400.00']	[52°21'30"]	[365.53']
(3)	[700.00']	[42°59'32"]	[525.25']
(4)	[1850.00']	[10°21'59"]	[334.72']
(5)	[6000.00']	[03°57'09"]	[413.90']
(6)	466.00'	53°15'39"	433.18'
(7)	500.00'	26°15'08"	229.09'
(8)	{550.00'}	54°22'12"	521.91'
(9)	{250.00'}	{52°21'30"}	{228.46'}
(10)	{634.00'}	{37°15'22"}	{412.25'}
(11)	{4850.00'}	{02°44'13"}	{231.69'}
(12)	{4900.00'}	{03°07'31"}	{267.28'}
(13)	5900.00'	02°50'15"	292.19'
(14)	300.00'	132°38'55"	694.55'
(15)	500.00'	52°21'30"	456.91'
(16)	800.00'	16°07'53"	225.24'
(17)	850.00'	11°36'28"	172.21'
(18)	1950.00'	05°39'42"	192.69'
(19)	6100.00'	03°57'09"	420.80'

C/L Course Data shown this RW Map per Geometry Chain "ALN1" in Caice Project 2E000

CC191
 Found a 1 inch iron pipe with a 2-1/2 inch brass cap stamped "USGLO 1939" at W 1/4 corner of Section 20

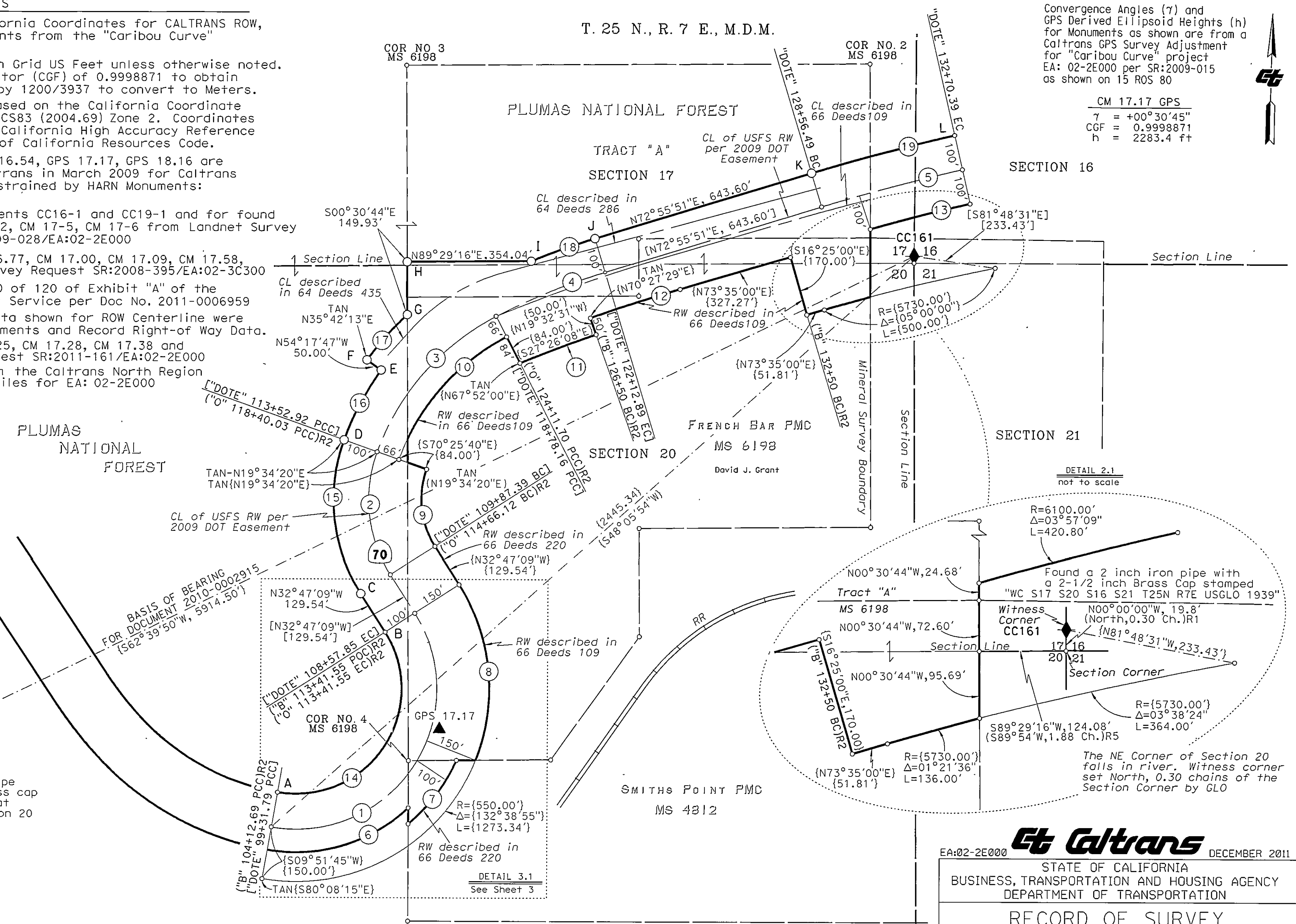
LEGEND

- ▲ CALTRANS GPS PROJECT CONTROL MONUMENT SET PURSUANT TO STATIC GPS SURVEY FOR EA:02-2E000 AS SHOWN ON 15 ROS 80
 - △ CALTRANS SUPPLEMENTAL CONTROL MONUMENTS PER SURVEY FOR SR:2008-395/EA:02-3C300 AND SURVEY FOR SR:2009-028/EA:02-2E000 AND SURVEY FOR SR:2011-161/EA:02-2E000 (SEE CONTROL TABLE SHEET 3 FOR DESCRIPTIONS)
 - ◆ PLSS MONUMENT FOUND DURING LANDNET SURVEYS PURSUANT TO SR:2009-028/EA:02-2E000
 - ◇ APPROXIMATE LOCATION OF PLSS MONUMENT NOTHING SEARCHED FOR AND NOTHING SET
 - SET 1-1/2" ALUM CAP ON 3/4" REBAR STAMPED "CALTRANS RW" PER SR:2011-161/EA:02-2E000
 - DIMENSION POINT-CALCULATED LOCATION NOTHING SEARCHED FOR AND NOTHING SET
- [BRG/DIST] = MEAS, R3
 [BRG/DIST] = MEAS, R4
 SFNF = SEARCHED FOR, NOT FOUND
 PLSS = PUBLIC LAND SURVEY SYSTEM



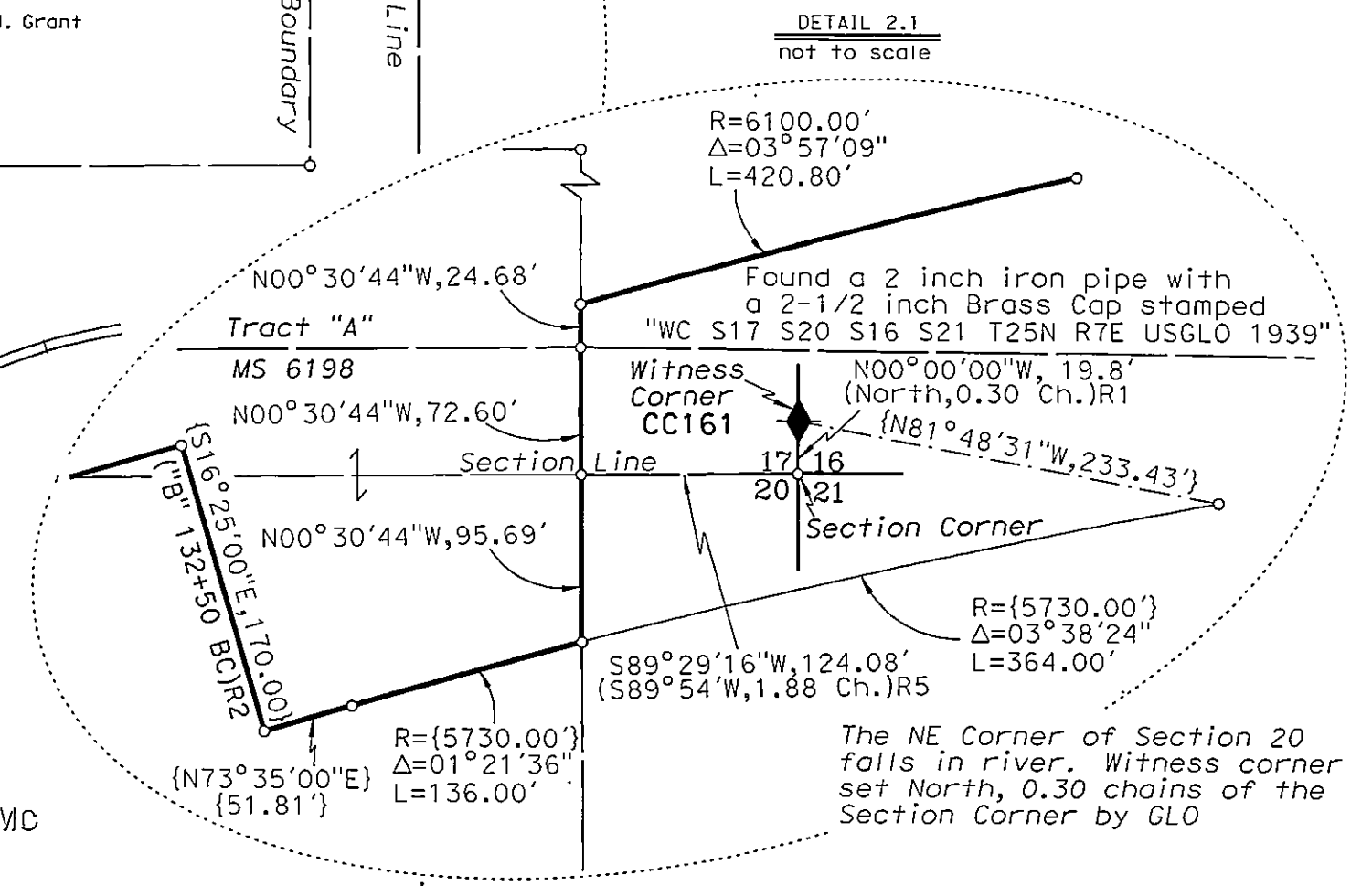
PLUMAS NATIONAL FOREST

T. 25 N., R. 7 E., M.D.M.



REFERENCES

- R1 - CALTRANS RW RECORD MAP NO. 143902.001 (Circa 1981)
- R2 - CALTRANS RW RECORD MAP NO. 9-21-453.02 (Circa 1959)
- R3 - 2009 USFS DOT EASEMENT - DOC NO. 2011-0006959
- R4 - RW GRANT DEED NO. 2010-0002915 for CALTRANS PARCELS 13793-13794
- R5 - GLO MINERAL SURVEY NO. 6198 (MS6198)
- R6 - CALTRANS GPS SURVEY PER 15 ROS 80 FOR PROJECT EA: 02-2E000



EA:02-2E000 **Caltrans** DECEMBER 2011

STATE OF CALIFORNIA
 BUSINESS, TRANSPORTATION AND HOUSING AGENCY
 DEPARTMENT OF TRANSPORTATION

**RECORD OF SURVEY
 FOR PROJECT CONTROL
 AND RIGHT-OF-WAY
 MONUMENTATION**

LYING WITHIN SEC 17 AND 20, T25N, R7E, MDM
 IN THE UNINCORPORATED TERRITORY OF THE
 COUNTY OF PLUMAS, STATE OF CALIFORNIA ALONG
 STATE HIGHWAY 70, POST MILES 17.0-17.5

CO.	RTE.	P.M.	SHEET NUMBER
PLU	70	17.0 - 17.5	2 of 3