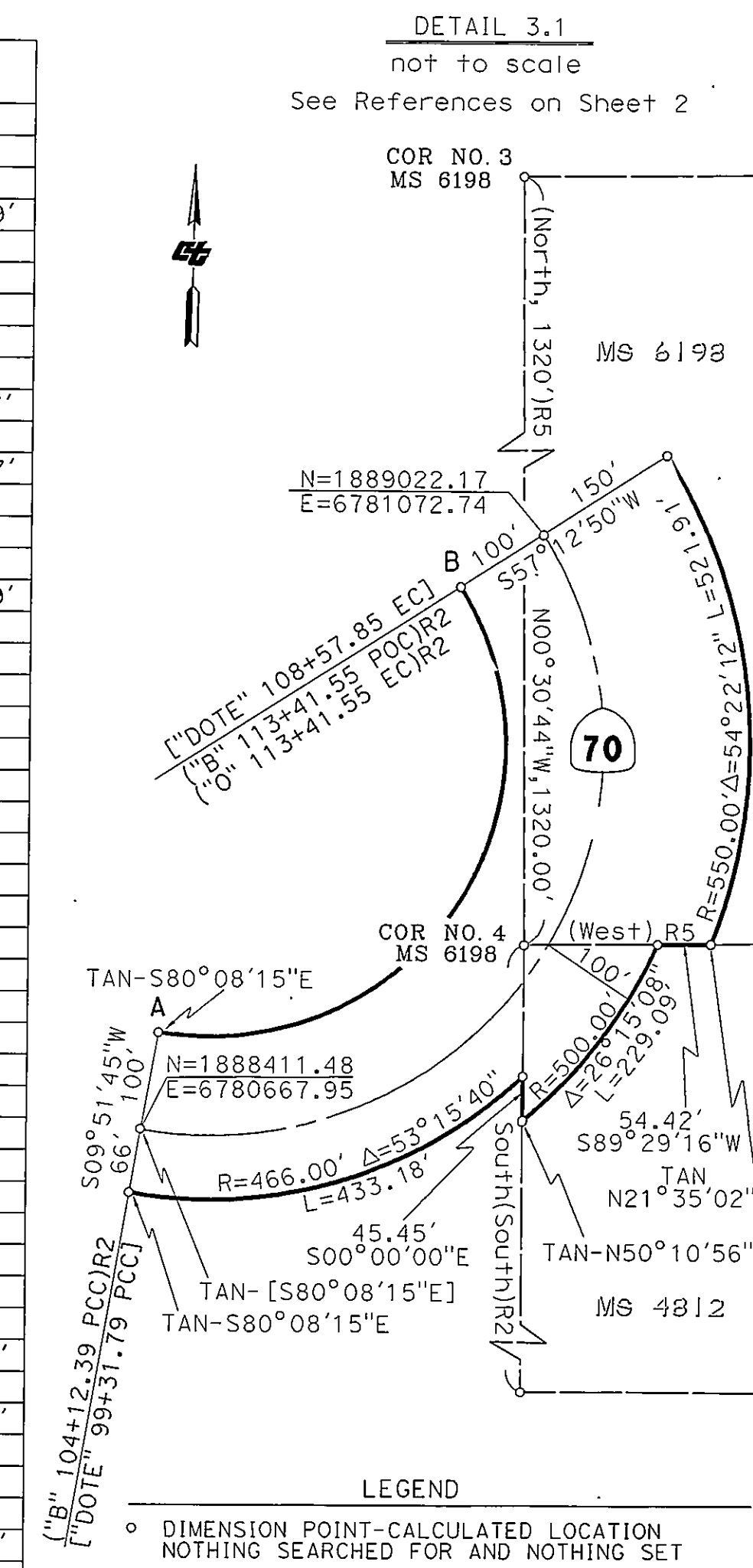


PROJECT CONTROL MONUMENTS - NAD 83 (2004.69) CCS ZONE 2 - US FEET				
POINT NAME	NORTHINGS	EASTINGS	DESCRIPTION / "STAMPING"	CALTRANS REFERENCE
GPS 15.30	1886427.31	6773672.25	FND 2-1/4" Brass Cap on 2" IP stamped "9-70 15.30 GPS"	15 ROS 80
CM 16.02	1887244.28	6776954.70	FND 1-1/2" Alum Cap on 3/4" Rebar stamped "CM 16.02"	SR:2008-395/EA:02-3C300
CM 16.13	1887638.05	6777427.20	FND 1-1/2" Alum Cap on 3/4" Rebar stamped "CM 16.13"	SR:2008-395/EA:02-3C300
CM 16.27	1887347.05	6777623.37	FND 1-1/2" Alum Cap on 3/4" Rebar stamped "CM 16.27"	SR:2008-395/EA:02-3C300
GPS 16.54	1889375.35	6778436.86	FND 2-1/4" Brass Cap in Rock stamped "9-70 16.54 GPS"	15 ROS 80
CM 16-3	1889562.14	6779570.55	FND T-Bar w/Bathey Cap stamped "16-3" (Circa 1980)	SR:2009-028/EA:02-2E000
CM 16.77	1889508.76	6779621.54	FND 1-1/2" Alum Cap on 3/4" Rebar stamped "CM 16.77"	SR:2008-395/EA:02-3C300
CM 17.00	1888518.21	6780351.04	FND 1-1/2" Alum Cap on 3/4" Rebar stamped "CM 17.00"	SR:2008-395/EA:02-3C300
CM 17-1	1888378.76	6780761.34	FND T-Bar w/Bathey Cap stamped "17-1" (Circa 1980)	SR:2009-028/EA:02-2E000
CM 17.09	1888396.33	6780846.41	FND 1-1/2" Alum Cap on 3/4" Rebar stamped "CM 17.09"	SR:2008-395/EA:02-3C300
CM 17-2	1888613.31	6781114.96	FND T-Bar w/Bathey Cap stamped "17-2" (Circa 1980)	SR:2009-028/EA:02-2E000
GPS 17.17	1888691.67	6781144.27	FND 2-1/4" Brass Cap on 2" IP stamped "9-70 17.17 GPS"	15 ROS 80
CM 17.25	1889029.23	6781101.22	FND 1-1/2" Alum Cap on 3/4" Rebar stamped "CM 17.25"	SR:2011-161/EA:02-2E000
CM 17.28	1889193.62	6780952.22	FND 1-1/2" Alum Cap on 3/4" Rebar stamped "CM 17.28"	SR:2011-161/EA:02-2E000
CM 17.38	1889550.96	6780942.75	FND 1-1/2" Alum Cap on 3/4" Rebar stamped "CM 17.38"	SR:2011-161/EA:02-2E000
CM 17-5	1889743.63	6781076.32	FND T-Bar w/Bathey Cap stamped "17-5" (Circa 1980)	SR:2009-028/EA:02-2E000
CM 17.43	1889882.11	6781193.57	FND 1-1/2" Alum Cap on 3/4" Rebar stamped "CM 17.43"	SR:2011-161/EA:02-2E000
CM 17-6	1889939.33	6781376.91	FND T-Bar w/Bathey Cap stamped "17-6" (Circa 1980)	SR:2009-028/EA:02-2E000
CM 17.58	1890115.45	6782053.75	FND 1-1/2" Alum Cap on 3/4" Rebar stamped "CM 17.58"	SR:2008-395/EA:02-3C300
CM 17.82	1890284.24	6783267.05	FND 1-1/2" Alum Cap on 3/4" Rebar stamped "CM 17.82"	SR:2008-395/EA:02-3C300
CM 18.09	1889115.21	6783957.78	FND 1-1/2" Alum Cap on 3/4" Rebar stamped "CM 18.09"	SR:2008-395/EA:02-3C300
GPS 18.16	1888926.04	6784293.99	FND 2-1/4" Brass Cap on 2" IP stamped "9-70 18.16 GPS"	15 ROS 80

ROW AND PLSS MONUMENTS - NAD 83 (2004.69) CCS ZONE 2 - US FEET				
POINT NAME	NORTHINGS	EASTINGS	DESCRIPTION / "STAMPING"	CALTRANS REFERENCE
CC161	1890044.61	6782488.00	FND 2-1/2" Brass Cap on 2" Iron Pipe / "WC S20...USGLO 1939"	Cad Card 16-1
CC191	1887328.63	6777233.98	FND 2-1/2" Brass Cap on 1" Iron Pipe / "USGLO 1939"	Cad Card 19-1
RW PT A	1888510.01	6780685.08	Nothing set - Not Suitable for Monumentation	SET1
RW PT B	1888968.02	6780988.67	Nothing set - Not Suitable for Monumentation	SET2
RW PT C	1889076.93	6780918.53	SET 1-1/2" Aluminum Cap on 3/4" Rebar / "CALTRANS RW"	SET3
RW PT D	1889515.18	6780867.77	SET 1-1/2" Aluminum Cap on 3/4" Rebar / "CALTRANS RW"	SET4
RW PT E	1889714.05	6780971.90	SET 1-1/2" Aluminum Cap on 3/4" Rebar / "CALTRANS RW"	RW21
RW PT F	1889743.23	6780931.30	SET 1-1/2" Aluminum Cap on 3/4" Rebar / "CALTRANS RW"	RW20
RW PT G	1889871.97	6781045.23	SET 1-1/2" Aluminum Cap on 3/4" Rebar / "CALTRANS RW"	RW19
RW PT H	1890021.90	6781043.89	SET 1-1/2" Aluminum Cap on 3/4" Rebar / "CALTRANS RW"	SET5
RW PT I	1890025.06	6781397.92	SET 1-1/2" Aluminum Cap on 3/4" Rebar / "CALTRANS RW"	SET6
RW PT J	1890090.63	6781579.03	SET 1-1/2" Aluminum Cap on 3/4" Rebar / "CALTRANS RW"	SET7
RW PT K	1890279.54	6782194.28	SET 1-1/2" Aluminum Cap on 3/4" Rebar / "CALTRANS RW"	RWLT4
RW PT L	1890389.09	6782600.48	Nothing set - Not Suitable for Monumentation	SET8

CONTROL NETWORK INVERSES	
Grid Bearings and Grid Distances.	
GPS 15.30	
CM 16.02	N 76°01'25" E, 3382.59'
CM 16.13	N 50°11'35" E, 615.07'
CM 16.27	N 15°27'58" E, 735.64'
GPS 16.54	N 38°20'51" E, 1311.17'
CM 16-3	N 80°38'38" E, 1148.97'
CM 16.77	S 43°41'33" E, 73.82'
CM 17.00	S 36°22'13" E, 1230.19'
CM 17-1	S 71°13'43" E, 433.35'
CM 17-5	N 78°19'51" E, 86.86'
CM 17.09	N 51°03'47" E, 345.25'
CM 17-2	N 20°30'26" E, 83.66'
GPS 17.17	N 07°16'05" W, 340.30'
CM 17.25	N 42°11'14" W, 221.87'
CM 17.28	N 01°31'05" W, 357.46'
CM 17.38	N 34°43'51" E, 234.44'
CM 17-5	N 40°15'20" E, 181.45'
CM 17.43	N 72°39'57" E, 192.06'
CM 17-6	N 75°24'52" E, 699.38'
CM 17.58	N 82°04'48" W, 1224.98'
CM 17.82	S 30°34'37" E, 1357.84'
CM 18.09	S 60°38'06" E, 385.77'
GPS 18.16	N 85°36'48" W, 5874.34'
GPS 16.54	S 58°15'12" W, 5602.89'
GPS 15.30	



SURVEYOR'S NOTES

3-1 Purpose of this survey is to publish California Coordinates for CALTRANS ROW, ROW Centerline, and Project Control Monuments from the "Caribou Curve", Safety Project" (EA: 02-2E000)

3-2 Distances and Coordinates are expressed in Grid US Feet unless otherwise noted. Divide Grid Distances by Combined Grid Factor (CGF) of 0.9998871 to obtain Ground Distances. Multiply US Feet Values by 1200/3937 to convert to Meters.

3-3 Bearings, distances, and coordinates are based on the California Coordinate System of 1983, Zone 2, Epoch 2004.69 - CCS83 (2004.69) Zone 2. Coordinates provided were generated from ties to the California High Accuracy Reference Network (HARN) pursuant to Section 8813.2 of California Resources Code.

3-4 Coordinates for Monuments: GPS 15.30, GPS 16.54, GPS 17.17, GPS 18.16 are from Static GPS Surveys performed by Caltrans in March 2009 for Caltrans Project EA: 02-2E000. Said GPS Survey constrained by HARN Monuments: "Maggie", "Clappe", and HPN-D CA 02-CR

SURVEYOR'S NOTES

3-5 Observed coordinates for found PLSS Monuments CC16-1 and CC19-1 and for found Control Monuments: CM 16-3, CM 17-1, CM 17-2, CM 17-5, CM 17-6 from Landnet Survey pursuant to Caltrans Survey Request SR:2009-028/EA:02-2E000

3-6 Control Monuments: CM 16.02, CM 16.13, CM 16.77, CM 17.00, CM 17.09, CM 17.58, CM 17.82 and CM 18.09 set per Caltrans Survey Request SR:2008-395/EA:02-3C300

3-7 This Survey and Map Shows ROW per sheet 50 of 120 of Exhibit "A" of the 2009 DOT Easement obtained from US Forest Service per Doc No. 2011-0006959

3-8 Measured Bearing and Distance and Curve Data shown for ROW Centerline were calculated as a "Best-Fit" using Found Monuments and Record Right-of Way Data.

3-9 RW Monuments and Control Monuments CM 17.25, CM 17.28, CM 17.38 and CM 17.43 were set per Caltrans Survey Request SR:2011-161/EA:02-2E000

3-10 Additional information may be obtained from the Caltrans North Region Office of Surveyors (NROS) in the project files for EA: 02-2E000

EA:02-2E000 **Caltrans** DECEMBER 2011

STATE OF CALIFORNIA
BUSINESS, TRANSPORTATION AND HOUSING AGENCY
DEPARTMENT OF TRANSPORTATION

**RECORD OF SURVEY
FOR PROJECT CONTROL
AND RIGHT-OF-WAY
MONUMENTATION**

LYING WITHIN SEC 17 AND 20, T25N, R7E, MDM
IN THE UNINCORPORATED TERRITORY OF THE
COUNTY OF PLUMAS, STATE OF CALIFORNIA ALONG
STATE HIGHWAY 70, POST MILES 17.0-17.5

CO.	RTE.	P.M.	SHEET NUMBER
PLU	70	17.0 - 17.5	3 of 3