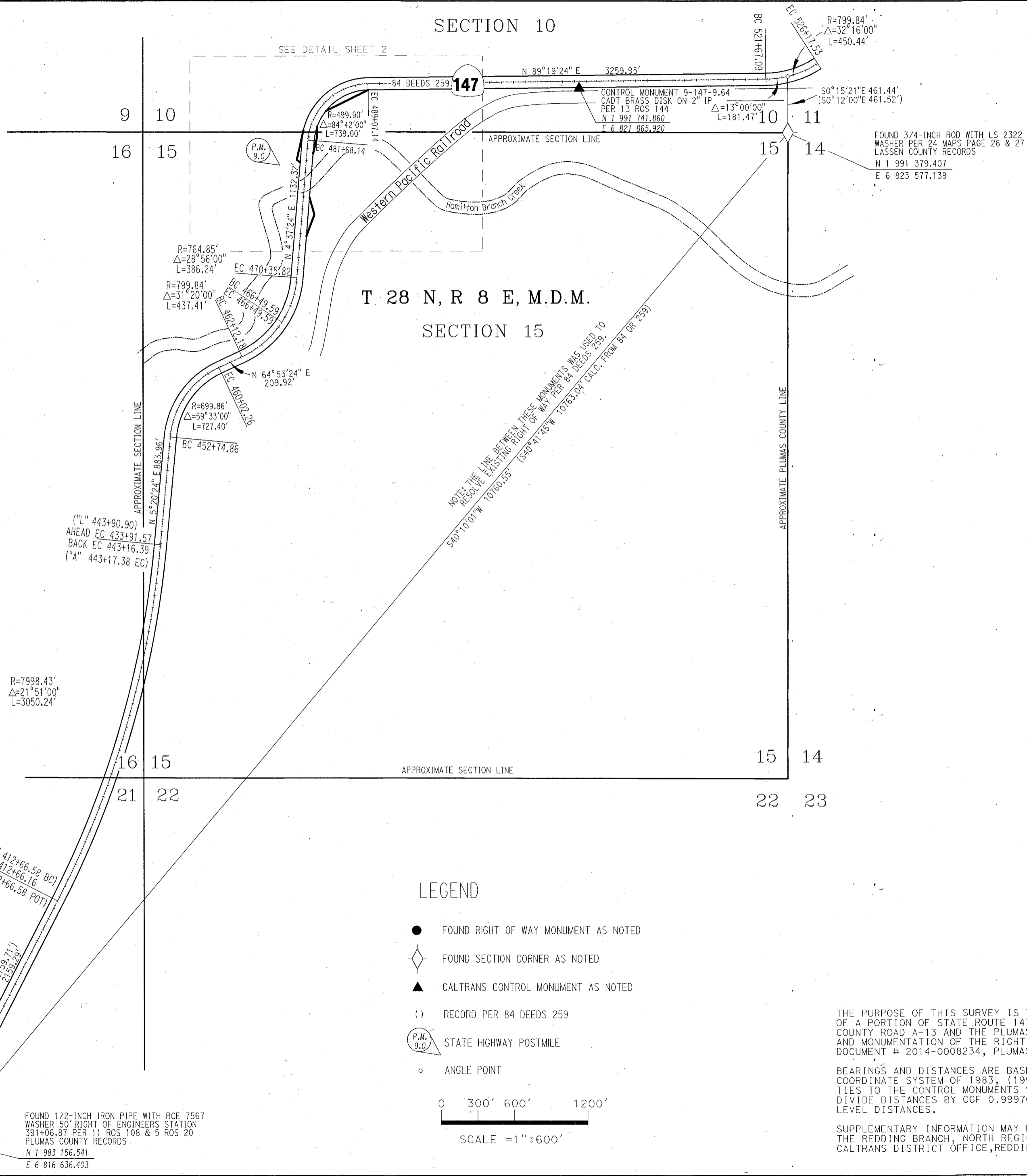


SECTION 10

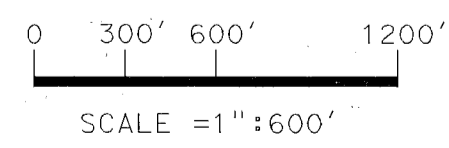
SEE DETAIL SHEET 2



T 28 N, R 8 E, M.D.M.
SECTION 15

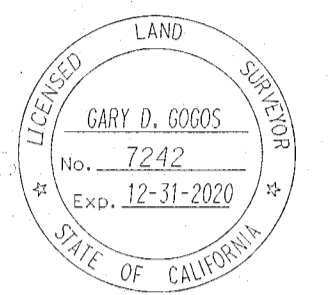
LEGEND

- FOUND RIGHT OF WAY MONUMENT AS NOTED
- ◆ FOUND SECTION CORNER AS NOTED
- ▲ CALTRANS CONTROL MONUMENT AS NOTED
- () RECORD PER 84 DEEDS 259
- P.M. 9.0 STATE HIGHWAY POSTMILE
- ANGLE POINT



SURVEYOR'S STATEMENT

THIS MAP CORRECTLY REPRESENTS A SURVEY MADE BY ME OR UNDER MY DIRECTION IN CONFORMANCE WITH THE REQUIREMENTS OF THE PROFESSIONAL LAND SURVEYORS' ACT AT THE REQUEST OF DEPARTMENT OF TRANSPORTATION IN AUGUST OF 2016
GARY D. GOGOS *Gary D Gogos*



COUNTY SURVEYOR'S STATEMENT

THIS MAP HAS BEEN EXAMINED IN ACCORDANCE WITH SECTION 8766 OF THE PROFESSIONAL LAND SURVEYORS' ACT THIS 11th DAY OF October, 2019
(SIGNED AND SEALED) *R Tom Shultz*
COUNTY SURVEYOR



RECORDER'S STATEMENT

FILED THIS 11 DAY OF October, 2019
AT 11:11 A.M.
IN BOOK 16 OF RECORD OF SURVEYS AT PAGE 63-64
AT THE REQUEST OF DEPARTMENT OF TRANSPORTATION.
(SIGNED) *Julie Hagwood*
COUNT RECORDER
Doc. No. 2019-0005228 DEPUTY
NO FEE: STATE BUSINESS

STATE OF CALIFORNIA
CALIFORNIA STATE TRANSPORTATION AGENCY
DEPARTMENT OF TRANSPORTATION
DISTRICT 02
**RECORD OF SURVEY
OF MONUMENTATION**
IN SECTIONS
TOWNSHIP 28 NORTH, RANGE 8 EAST, M.D.M.
SECTIONS 10, 11, 14, 15 16 & 21
IN THE UNINCORPORATED AREA OF THE COUNTY
OF PLUMAS, STATE OF CALIFORNIA, ALONG
STATE HIGHWAY ROUTE 147 AT POST MILE 7.5 TO 9.9
FEB, 2019 SHEET 1 OF 2

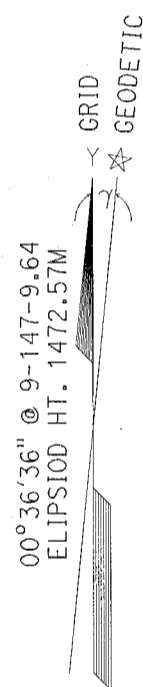
THE PURPOSE OF THIS SURVEY IS TO SHOW THE LOCATION OF A PORTION OF STATE ROUTE 147 RIGHT OF WAY BETWEEN COUNTY ROAD A-13 AND THE PLUMAS/LASSEN COUNTY LINE, AND MONUMENTATION OF THE RIGHT OF WAY ACQUIRED IN DOCUMENT # 2014-0008234, PLUMAS COUNTY RECORDS.
BEARINGS AND DISTANCES ARE BASED ON THE CALIFORNIA COORDINATE SYSTEM OF 1983, (1991.35) ZONE 1 THROUGH TIES TO THE CONTROL MONUMENTS SHOWN ON 13 ROS 144. DIVIDE DISTANCES BY CGF 0.99970846 TO OBTAIN GROUND LEVEL DISTANCES.
SUPPLEMENTARY INFORMATION MAY BE OBTAINED FROM THE REDDING BRANCH, NORTH REGION OFFICE OF SURVEYORS, CALTRANS DISTRICT OFFICE, REDDING, CA., PROJECT EA 4E640.

16 RS 63

T 28 N, R 8 E, M.D.M.

SECTION 10

SECTION 15

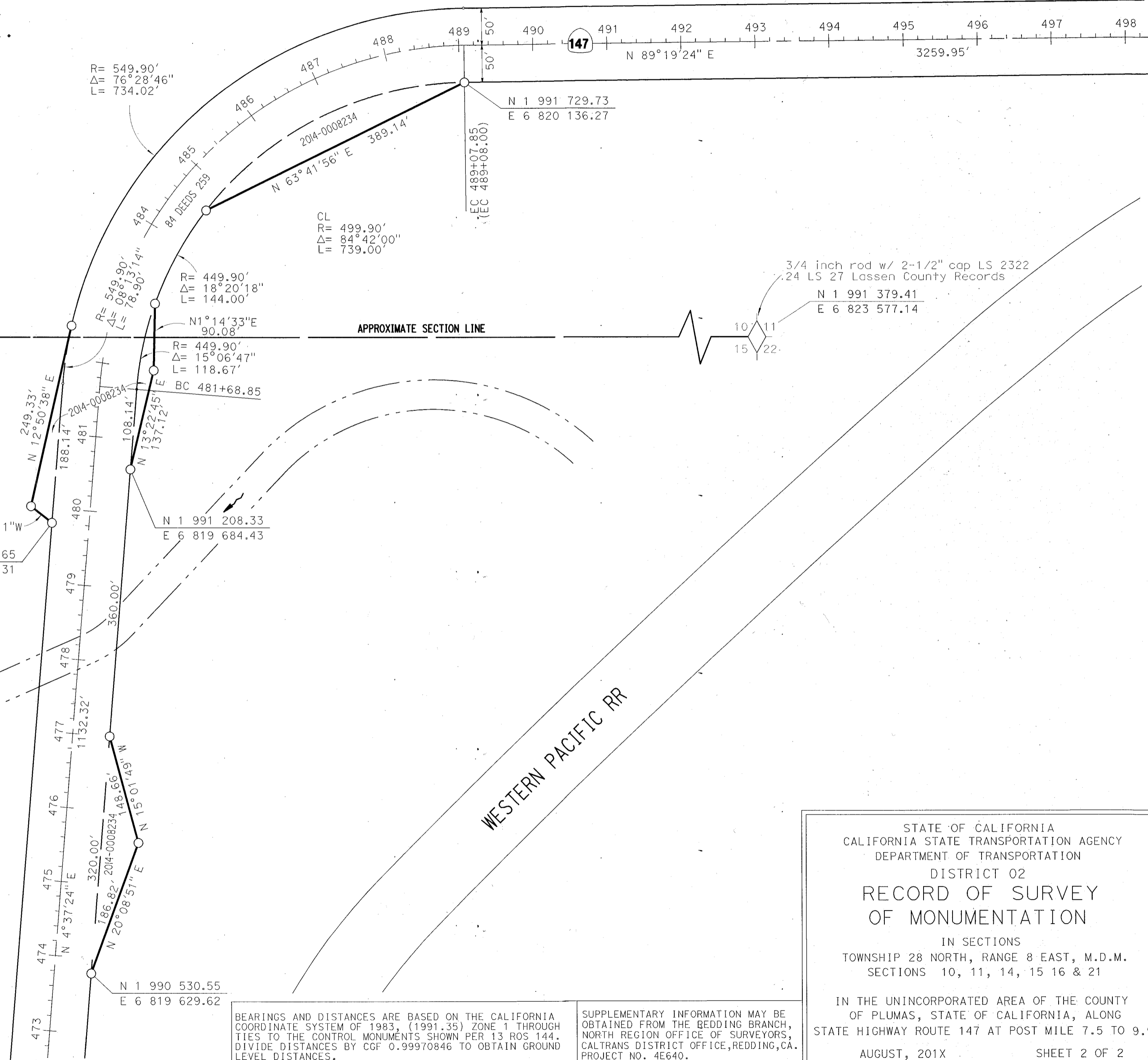
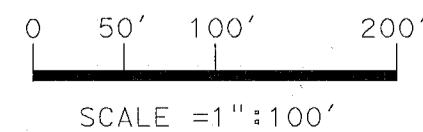


P.M.
9.0

LEGEND

- SET 5/8 INCH REBAR WITH 1-1/2 INCH ALUMINUM CAP STAMPED "CALTRANS" AT ANGLE POINT OF RIGHT OF WAY PARCEL ACQUIRED IN DOC. 2014-0008234
- () RECORD PER 84 DEEDS 259
- SUPSEDED RIGHT OF WAY LINE

P.M.
9.0 STATE HIGHWAY POSTMILE



BEARINGS AND DISTANCES ARE BASED ON THE CALIFORNIA COORDINATE SYSTEM OF 1983, (1991.35) ZONE 1 THROUGH TIES TO THE CONTROL MONUMENTS SHOWN PER 13 ROS 144. DIVIDE DISTANCES BY CGF 0.99970846 TO OBTAIN GROUND LEVEL DISTANCES.

SUPPLEMENTARY INFORMATION MAY BE OBTAINED FROM THE BEDDING BRANCH, NORTH REGION OFFICE OF SURVEYORS, CALTRANS DISTRICT OFFICE, REDDING, CA. PROJECT NO. 4E640.

STATE OF CALIFORNIA
CALIFORNIA STATE TRANSPORTATION AGENCY
DEPARTMENT OF TRANSPORTATION
DISTRICT 02
**RECORD OF SURVEY
OF MONUMENTATION**
IN SECTIONS
TOWNSHIP 28 NORTH, RANGE 8 EAST, M.D.M.
SECTIONS 10, 11, 14, 15 16 & 21

IN THE UNINCORPORATED AREA OF THE COUNTY
OF PLUMAS, STATE OF CALIFORNIA, ALONG
STATE HIGHWAY ROUTE 147 AT POST MILE 7.5 TO 9.9
AUGUST, 201X SHEET 2 OF 2

16 RS 64