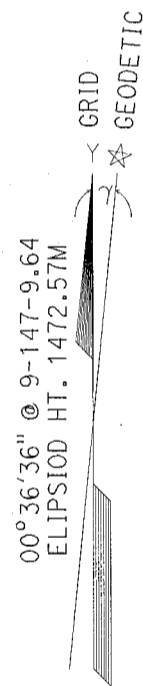


T 28 N, R 8 E, M.D.M.

SECTION 10

SECTION 15

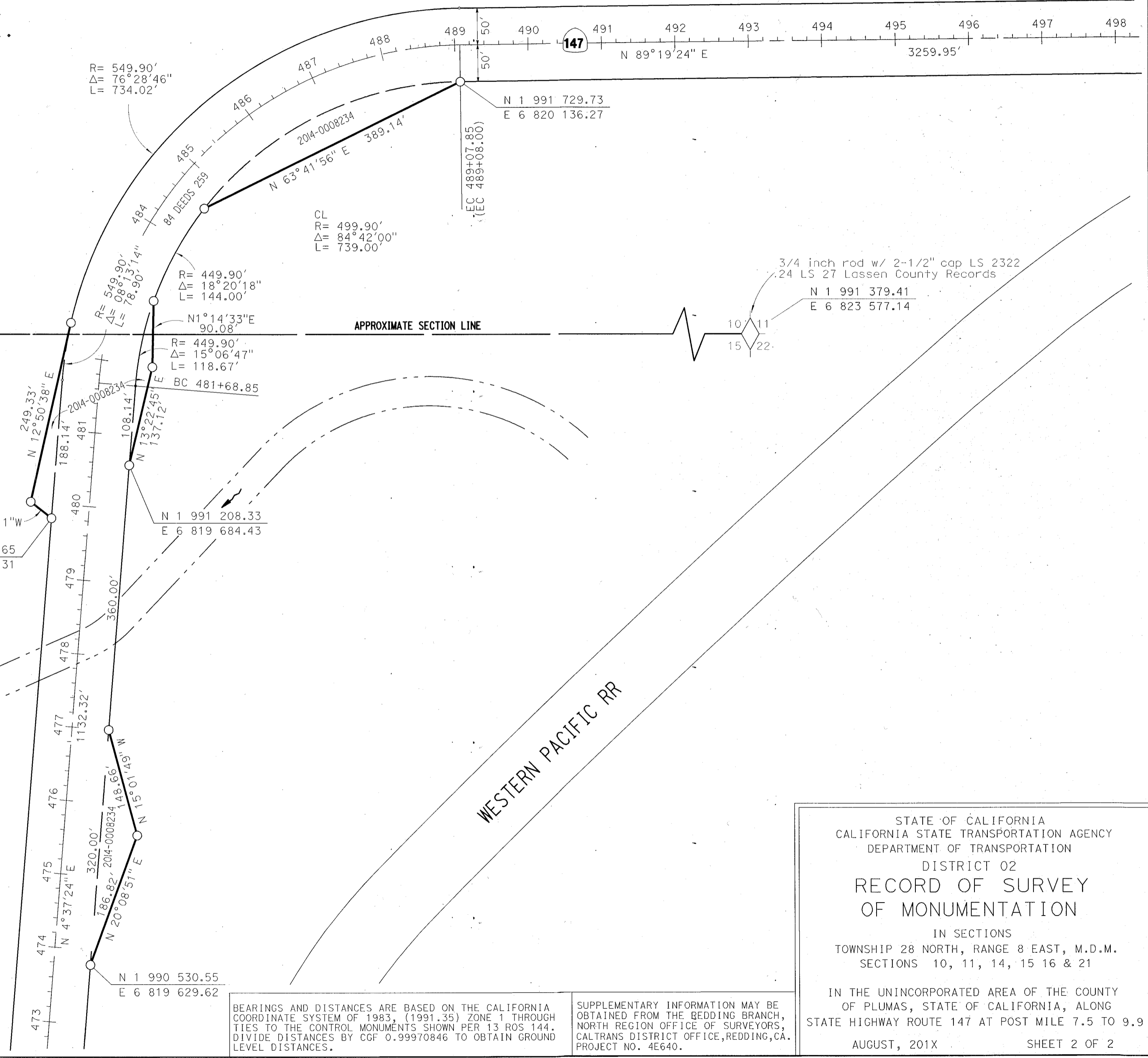
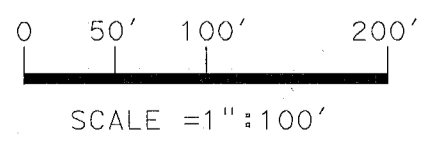


P.M.
9.0

LEGEND

- SET 5/8 INCH REBAR WITH 1-1/2 INCH ALUMINUM CAP STAMPED "CALTRANS" AT ANGLE POINT OF RIGHT OF WAY PARCEL ACQUIRED IN DOC. 2014-0008234
- () RECORD PER 84 DEEDS 259
- SUPSEDED RIGHT OF WAY LINE

P.M.
9.0 STATE HIGHWAY POSTMILE



BEARINGS AND DISTANCES ARE BASED ON THE CALIFORNIA COORDINATE SYSTEM OF 1983, (1991.35) ZONE 1 THROUGH TIES TO THE CONTROL MONUMENTS SHOWN PER 13 ROS 144. DIVIDE DISTANCES BY CGF 0.99970846 TO OBTAIN GROUND LEVEL DISTANCES.

SUPPLEMENTARY INFORMATION MAY BE OBTAINED FROM THE BEDDING BRANCH, NORTH REGION OFFICE OF SURVEYORS, CALTRANS DISTRICT OFFICE, REDDING, CA. PROJECT NO. 4E640.

STATE OF CALIFORNIA
CALIFORNIA STATE TRANSPORTATION AGENCY
DEPARTMENT OF TRANSPORTATION
DISTRICT 02
**RECORD OF SURVEY
OF MONUMENTATION**
IN SECTIONS
TOWNSHIP 28 NORTH, RANGE 8 EAST, M.D.M.
SECTIONS 10, 11, 14, 15 16 & 21

IN THE UNINCORPORATED AREA OF THE COUNTY
OF PLUMAS, STATE OF CALIFORNIA, ALONG
STATE HIGHWAY ROUTE 147 AT POST MILE 7.5 TO 9.9
AUGUST, 201X SHEET 2 OF 2

16 RS 64