

SUMMARYS:

DURING THE PERFORMANCE OF THIS SURVEY I ENCOUNTERED 5 DIFFERENT SURVEYORS PRODUCING 6 PARCEL MAPS AND 4 RECORDS OF SURVEYS. I DECIDED TO ACCEPT DEL TERRA'S SURVEY 13 RS 22. THIS SURVEY WAS PERFORMED UNDER A U.S.FOREST SERVICE CONTRACT INSPECTED AND ACCEPTED. DEL TERRA'S SURVEYOR WILLIAM NOWLIN USED SURVEY GRADE GPS AND HIS MAP WAS TIED TO U.S.G.S. CONTROL STATIONS. I HAVE CHECKED NOWLIN'S SURVEYS IN THE PAST AND FIND HIM TO DO EXCELLENT WORK, THEREFORE I AM USING HIS RECORD MAP AS THE BASIS OF THIS SURVEY. I USED A TIE BETWEEN THE N 1/4 CORNER OF S35 AND THE CW 1/16 OF S35.

IN ORDER TO PRESERVE THE INTEGRITY OF THE ADJOINING BOUNDARIES OF THIS PARCEL I USED RECORD MAPS BY 5 SURVEYORS TO RECONSTRUCT LONG STANDING BOUNDARIES CREATED FROM 1970 TO THE PRESENT. THE PARCEL MAP THAT CAUSED MOST DISCRIPENCIES WAS JOHN SIMPSON'S (RCE 11173), RECORDED AT BOOK 2 PAGE 131. SIMPSON DID NOT MAKE NECESSARY SURVEY TIES TO DETERMINE A CORRECT NORTH BOUNDARY OF PARCEL 1 OF (2 PM 131). IN ADDITION, SAID BOUNDARY IMPACTED SOUTH LINE OF DENNIS TAYLOR'S PARCEL AND THE PLUMAS COUNTY FEE EASEMENT PARCEL. (SEE SHT 3 OF 4)

NOTES:

CORNER ③ WAS REESTABLISHED USING DISTANCE- DISTANCE INTERSECTION FROM CORNER NUMBER ⑭ 291.22' (R2) AND CORNER NUMBER ⑱ 347.65' (R2).

CORNER ④ WAS ESTABLISHED AT N89°16'38"E 0.26' FROM CORNER ⑱ AND THE INTERSECTION OF THE NORTHWESTERLY SIDE LINE OF THE COUNTY RD FEE EASEMENT AT AN ARC DISTANCE OF 12.07' FROM CORNER ⑤.

CORNER ⑤ WAS ESTABLISHED ON A LINE CONTROLLED BY 2 CORNERS SET BY JOHN SIMPSON (RCE 11173) UNDER (R3) AS SHOWN ON DETAIL B THAT ALSO FOLLOWS AN OLD FENCE LINE.

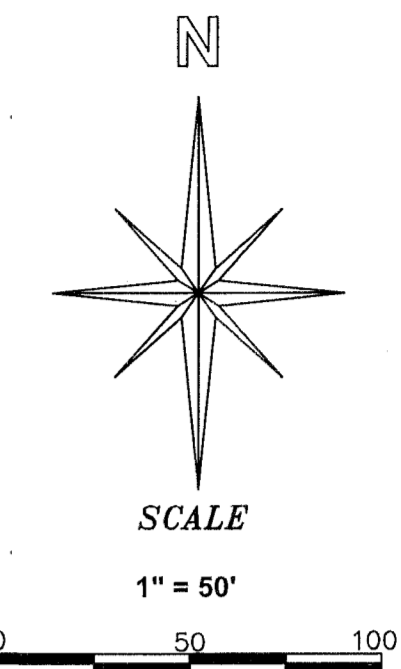
CORNER ⑥ WAS ESTABLISHED ON THE SAME LINE AS CORNER ⑤ AND AT THE INTERSECTION OF THE SOUTHEASTERLY SIDE LINE OF THE AFOREMENTIONED COUNTY RD SHOWN ON DETAIL B.

CORNER ⑦ WAS ESTABLISHED ON THE SAME LINE AS CORNERS ⑤ TO ⑥ AND THE INTERSECTION OF THE LINE BETWEEN C-E- NW 1/64 CORNER AND CORNER ② ON THE NORTH LINE OF SEC. 35. (SEE DETAIL B)

CORNERS ⑧ AND ⑨ ARE SET ON THE LINE BETWEEN CORNERS ⑦ AND ② AND AT THE INTERSECTION OF THE AFOREMENTIONED COUNTY RD. (SEE DETAIL B)

BASIS OF BEARINGS

(SEE SHEET 1 FOR B.O.B.)

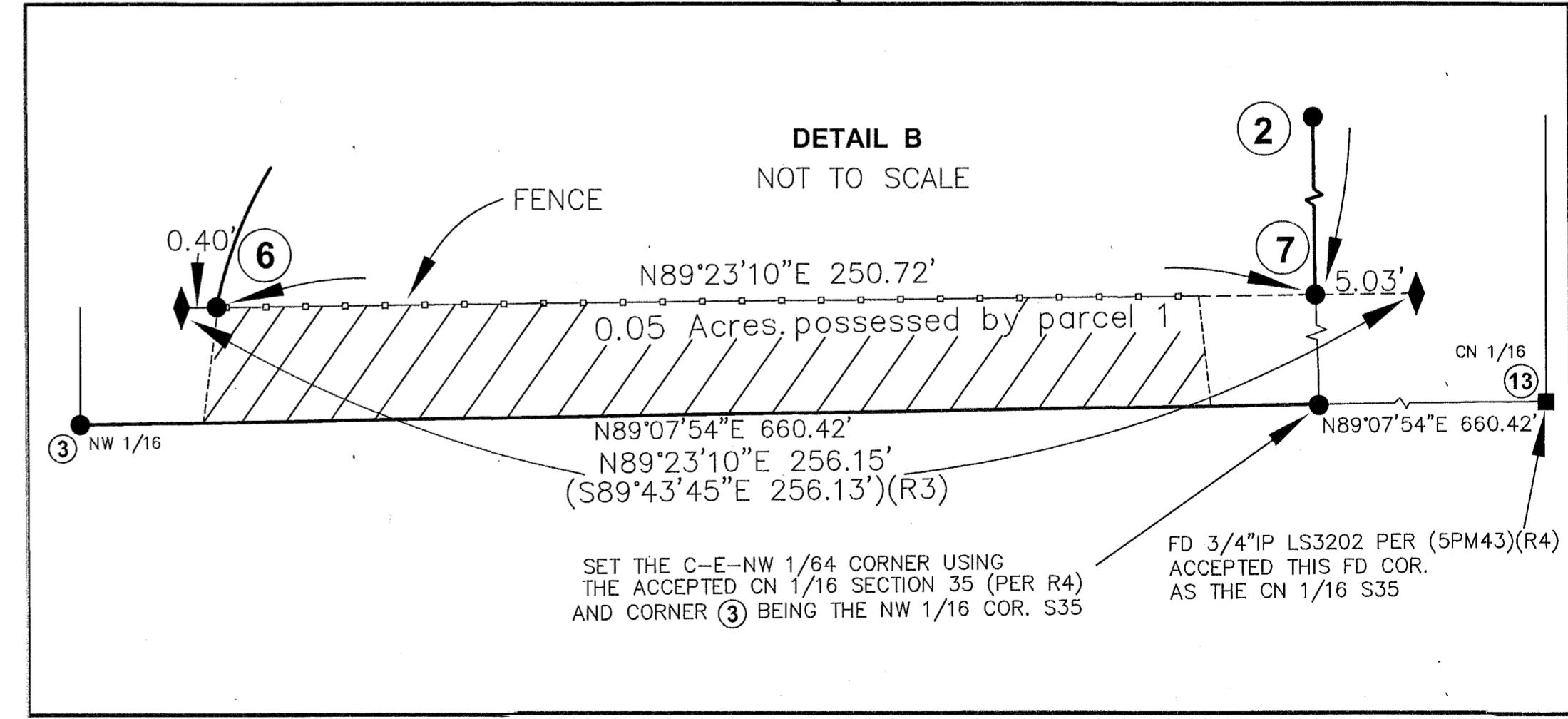
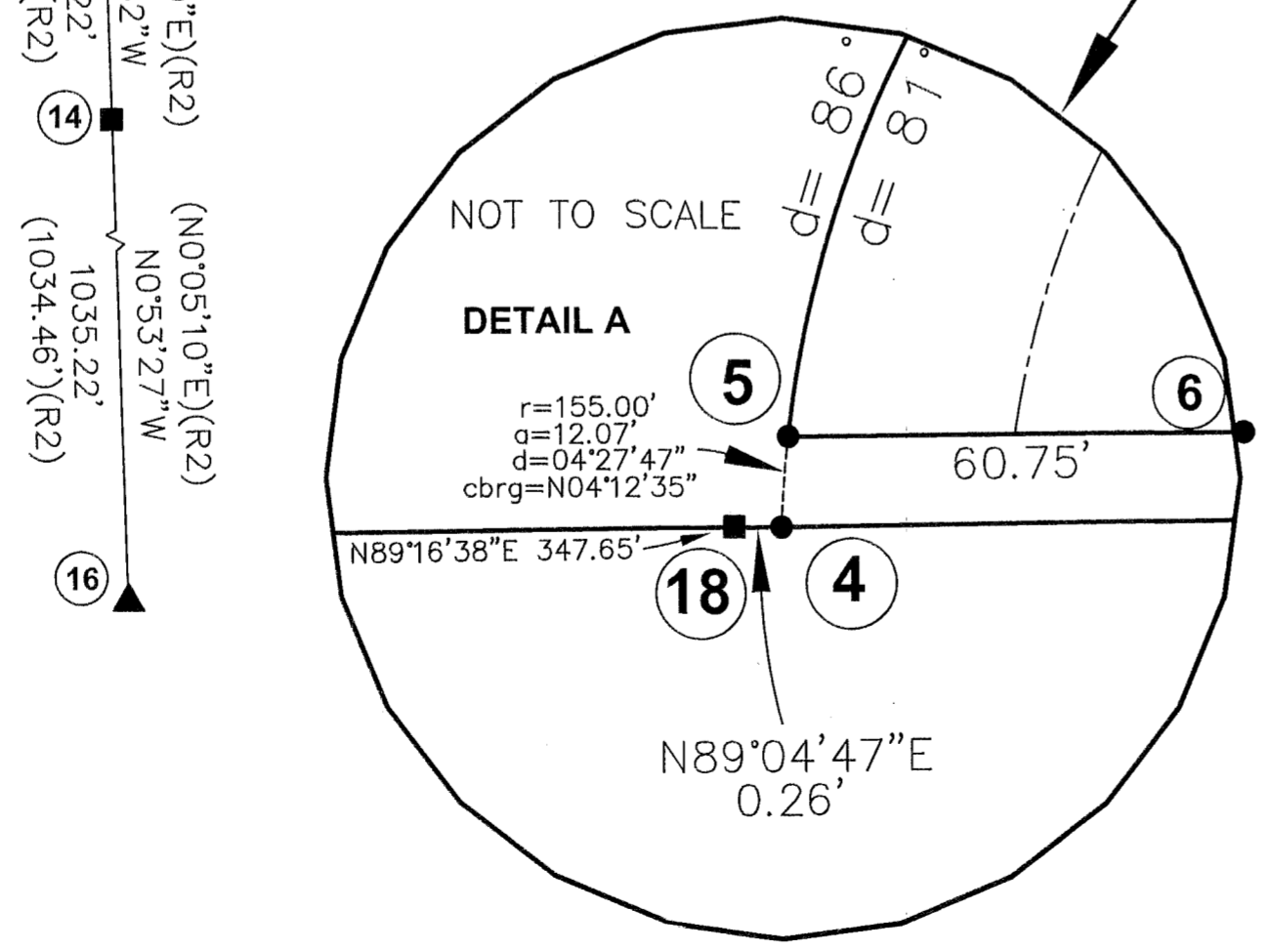
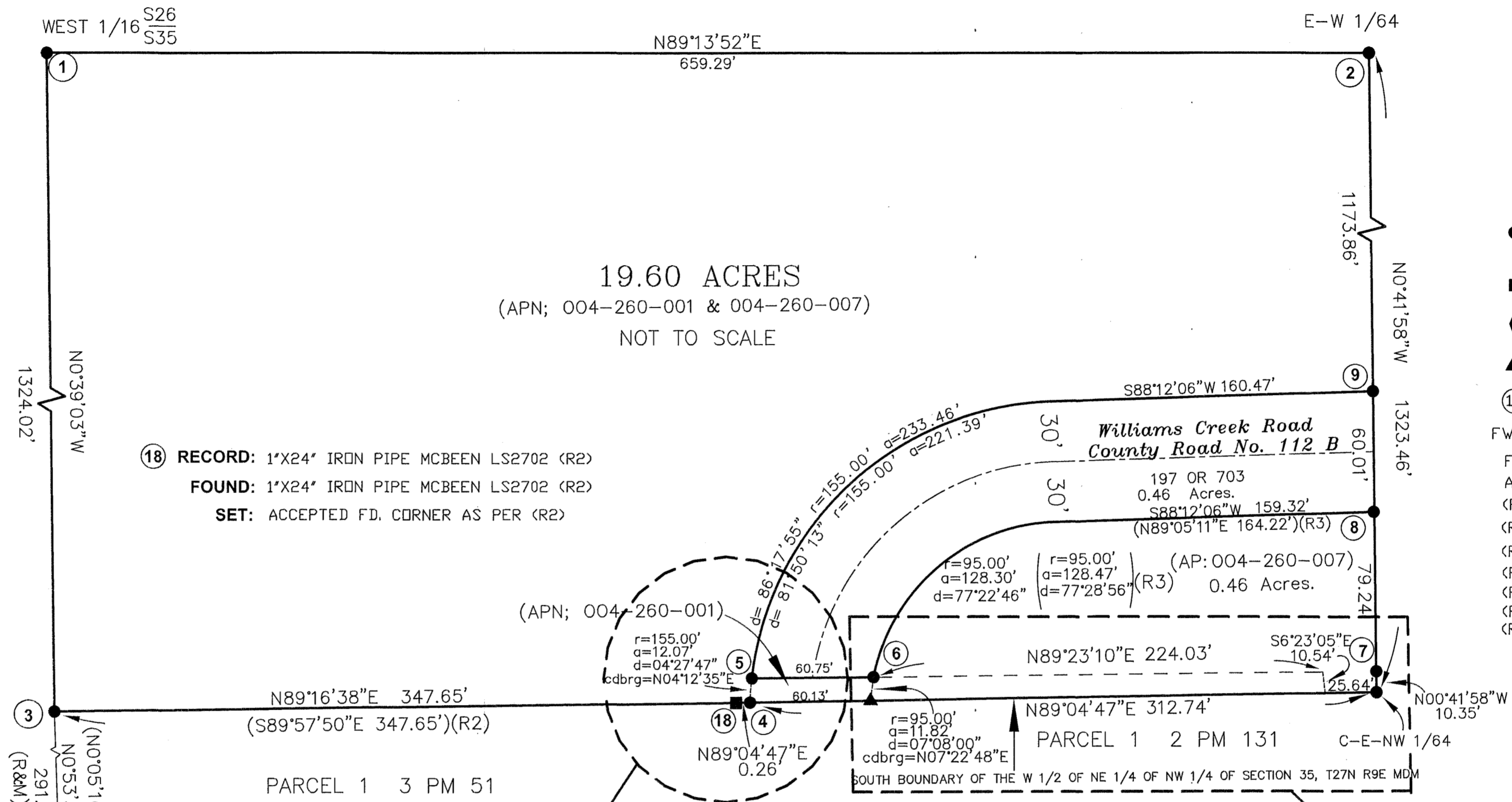


LEGEND

- SET 5/8" REBAR W/ 1 1/2 INCH ALM CAP LS5623
- FOUND CORNER AS NOTED
- ◆ FOUND 1/2" STEEL PIN SET PER (R3)
- ▲ CALC. CORNER
- ⑩ CORNER NOTE
- FWBS: FROM WHICH BEARS
- FD FOUND
- ALM ALUMINUM
- (R1) 13 RS 22 (LS4753)
- (R2) 3 PM 51 (LS2702)
- (R3) 2 PM 131 (RCE11173)
- (R4) 5 PM 43 (LS3202)
- (R5) 8 PM 119 (RCE22836)
- (R6) 2 RS 35 (LS2702)
- (R7) 197 OR 703

NOTE

Center-East-Northwest 1/64 (C-E-NW 1/64)
Center North 1/64 (CN 1/64)
North West 1/16 (NW 1/16)
(BLM Manual of Instructions)



SNOW LAND SURVEYING

8736 DAMSELFLY DR.
RENO, NV. 89523
775-787-8420

RECORD OF SURVEY

FOR
DENNIS & CINDY TAYLOR
DOC - 2017-0001017
A PORTION OF THE EAST 1/2 OF THE NW 1/4 OF
SECTION 35, T27N R9E, MDM
PLUMAS COUNTY, CALIFORNIA
W.G. SNOW DATE: JUNE 2018 SHEET 3 OF 4

16 RS 70