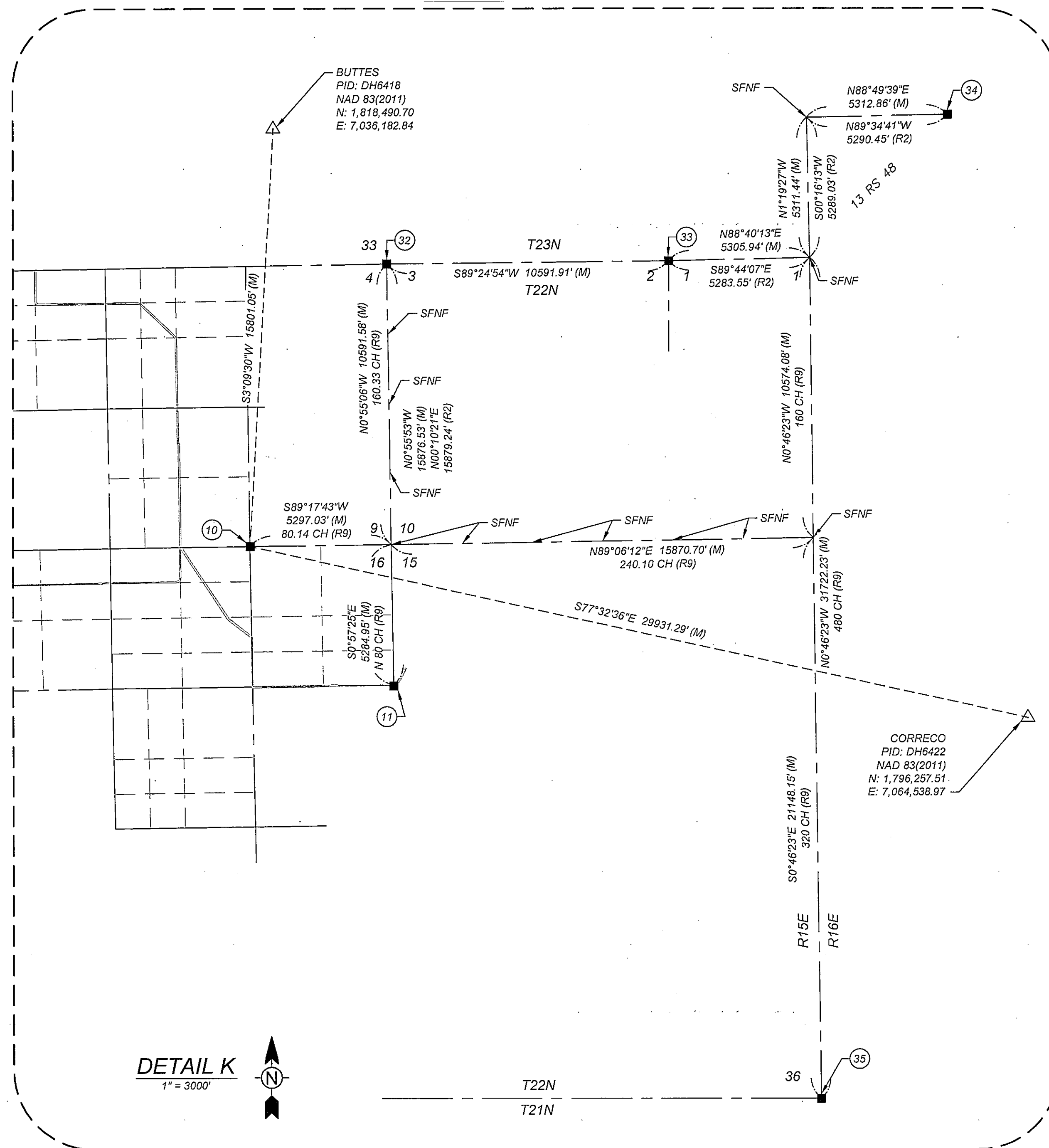


LEGEND

- FOUND MONUMENT AS NOTED
- × CALCULATED POINT  
NOTHING FOUND - NOTHING SET
- ⊗ FND MONUMENTS OR  
CORNER NOTE. SEE  
SHEET 4
- SFNF SEARCHED FOR, NOT FOUND
- (RAD) RADIAL
- (M) MEASURED
- (R1) 6 RS 76
- (R2) 13 RS 48
- (R3) 13 RS 77
- (R4) 4 RS 147
- (R5) 5 RS 49
- (R6) 9 RS 62
- (R7) 15 RS 18
- (R8) 14 RS 134
- (R9) GLO FIELD NOTES
- (R10) 9 RS 121
- (R11) DOC #2008-0002411



MONUMENT AND RECORD NOTES

- 1 FOUND 2" ALUMINUM CAP TAGGED "LS 2843, SECTION CORNER 33, 34, 3, 4" PER (R1)
- 2 FOUND 2" ALUMINUM CAP TAGGED "LS 2843, QUARTER CORNER 34, 3" PER (R1)
- 3 FOUND 2" ALUMINUM CAP TAGGED "LS 2843, 2003, SECTION CORNER 36, 31, 6, 1" PER (R2)
- 4 FOUND 2" ALUMINUM CAP TAGGED "LS 2843, QUARTER CORNER 31, 6" PER (R3)
- 5 FOUND 2" ALUMINUM CAP TAGGED "LS 2843" ACCEPTED AS SECTION CORNER PER (R2)
- 6 FOUND 2" ALUMINUM CAP TAGGED "LS 2843, 2004, CENTER CORNER 6" PER (R3)
- 7 FOUND 2" ALUMINUM CAP TAGGED "LS 2843, 2004, SECTION CORNER 5, 6, 7, 8" PER (R3)
- 8 FOUND 2.5" BRASS CAP TAGGED "NEITZ RLS 1980" 50 FEET SOUTHEAST FROM QUARTER CORNER, NOT ACCEPTED
- 9 FOUND FENCE CORNER, ACCEPTED AS SECTION CORNER PER (R2)
- 10 FOUND 2" ALUMINUM CAP TAGGED "LS 2843, SECTION CORNER 8, 9, 16, 17" PER (R2)
- 11 FOUND 2" ALUMINUM CAP TAGGED "LS 2843 WITNESS CORNER 32.8' NORTH TO SECTION CORNER" IN LIEU OF CAP AT ACTUAL CORNER PER R2
- 12 FOUND REMNANTS OF STEEL PIN IN STONE, ACCEPTED AS SECTION CORNER AS FND PER (R2)
- 13 FOUND 2" ALUMINUM CAP TAGGED "LS 2843, 1/16 CORNER" PER (R2)
- 14 FOUND 2" ALUMINUM CAP TAGGED "LS 2843, QUARTER CORNER" PER (R2)
- 15 FOUND 2" ALUMINUM CAP TAGGED "LS 2843, 1/16 CORNER" PER (R2)
- 16 FOUND 2" ALUMINUM CAP TAGGED "LS 2843" ACCEPTED AS SECTION CORNER PER (R2)
- 17 FOUND 5/8" REBAR PER (R6), ACCEPTED AS 1/16 CORNER
- 18 FOUND 5/8" REBAR PER (R5), ACCEPTED AS SECTION CORNER
- 19 FOUND 5/8" REBAR PER (R6), ACCEPTED AS 1/16 CORNER
- 20 FOUND 1" REBAR AND CAP TAGGED "LS 3297, SECTION CORNER" PER (R5)
- 21 FOUND 5/8" REBAR PER (R4), ACCEPTED AS SECTION CORNER
- 22 FOUND 5/8" REBAR PER (R4), ACCEPTED AS 1/16 CORNER
- 23 FOUND 5/8" REBAR PER (R4), ACCEPTED AS QUARTER CORNER
- 24 FOUND 5/8" REBAR PER (R4), ACCEPTED AS 1/16 CORNER
- 25 FOUND 5/8" REBAR PER (R4), ACCEPTED AS SECTION CORNER
- 26 FOUND 2" ALUMINUM CAP TAGGED "LS 2843, SECTION CORNER" PER (R3)
- 27 FOUND 2" ALUMINUM CAP TAGGED "LS 2843" PER (R8), ACCEPTED AS 1/16 CORNER
- 28 FOUND 2" ALUMINUM CAP TAGGED "LS 5620" PER (R7)
- 29 FOUND 2" ALUMINUM CAP TAGGED "LS 2843" QUARTER WITNESS CORNER PER (R3)
- 30 FOUND 2" ALUMINUM CAP TAGGED "LS 2843" QUARTER WITNESS CORNER PER (R3)
- 31 FOUND RAILROAD SPIKE PROP CORNER PER (R8)
- 32 FOUND 2" ALUMINUM CAP TAGGED "LS 2843, SECTION CORNER" PER (R2)
- 33 FOUND 2" ALUMINUM CAP TAGGED "LS 2843, SECTION CORNER" (R2)
- 34 FOUND 2" ALUMINUM CAP TAGGED "LS 2843" PER (R2)
- 35 FOUND 2" ALUMINUM CAP TAGGED "LS 2843, SECTION CORNER" PER (R2)
- 36 FOUND PLASTIC YELLOW CAP TAGGED LS 2843 PER (R10)
- 37 FOUND 2.5" BRASS CAP TAGGED "NEITZ RLS 1980" 2 FEET NORTHWEST FROM TRUE SECTION CORNER, NOT ACCEPTED

RECORD OF SURVEY

BEING A PORTION OF SECTIONS 1, 12, 13 AND 24, TOWNSHIP 22 NORTH, RANGE 14 EAST; SECTIONS 5 THROUGH 8 AND 16 THROUGH 20, TOWNSHIP 22 NORTH, RANGE 15 EAST; M.D.M., IN THE COUNTY OF PLUMAS, STATE OF CALIFORNIA



www.tetrattech.com

865 Aerovista Place, Suite 230  
San Luis Obispo, CA 93401  
(805) 542-9052

DETAIL K  
1" = 3000'



T22N  
T21N

SHEET 3 OF 3  
SURVEYED OCTOBER AND NOVEMBER 2013

16 RS 4