

SURVEYOR'S STATEMENT

THIS MAP CORRECTLY REPRESENTS A SURVEY MADE BY ME OR UNDER MY DIRECTION IN CONFORMANCE WITH THE REQUIREMENTS OF THE PROFESSIONAL LAND SURVEYOR'S ACT AT THE REQUEST OF THE NATURE CONSERVANCY IN DECEMBER, 2014

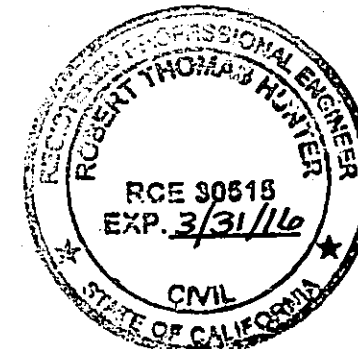
Leslie W. Coke
LESLIE W. COKE PLS 5712



COUNTY SURVEYOR'S STATEMENT

THIS MAP HAS BEEN EXAMINED IN ACCORDANCE WITH SECTION 8766 OF THE PROFESSIONAL LAND SURVEYOR'S ACT THIS 2nd DAY OF March, 2015.

Robert Thomas Hunter
ROBERT THOMAS HUNTER RCE 30515
PLUMAS COUNTY SURVEYOR



RECORDER'S STATEMENT

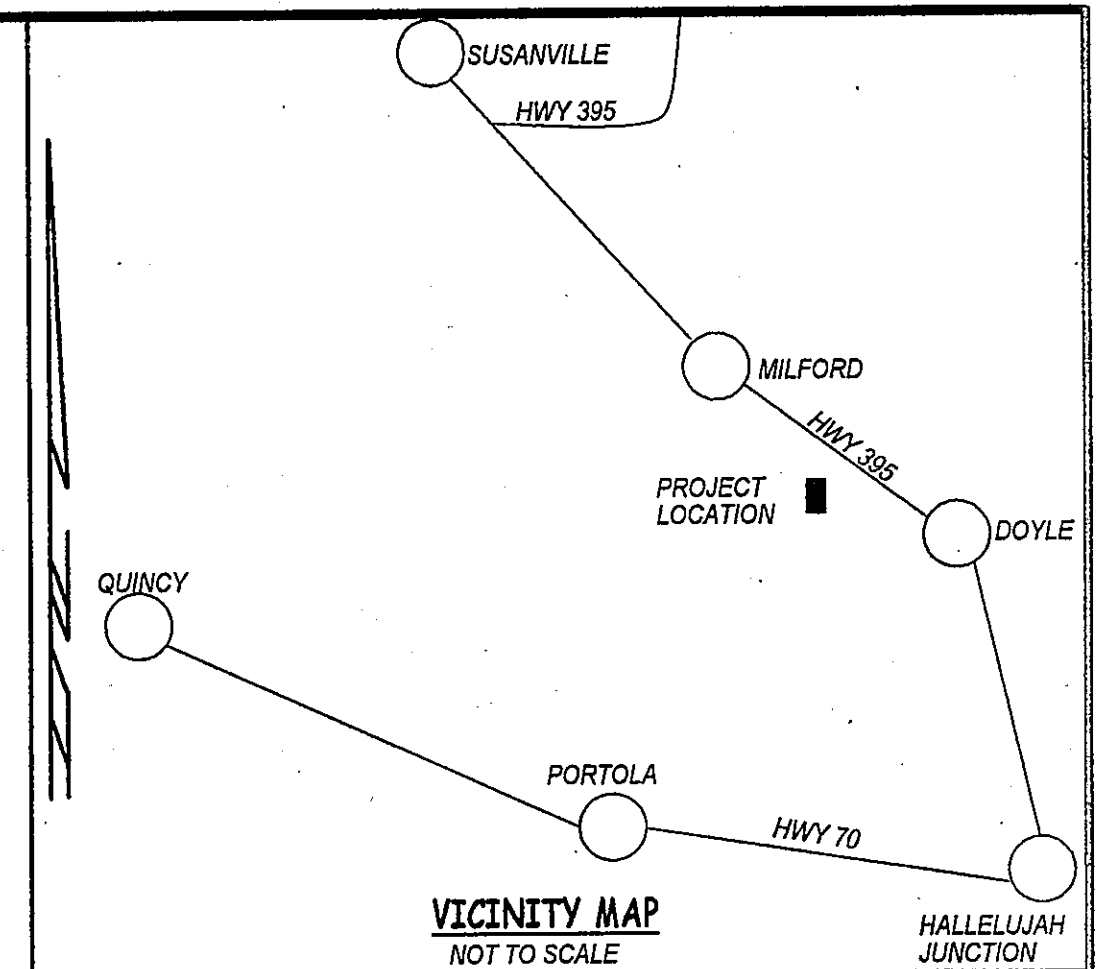
FILED THIS 4th DAY OF March 2015, AT 9:37 AM IN BOOK 16 OF MAPS, PAGE 5 AT THE REQUEST OF LESLIE COKE

JUDITH WELLS
PLUMAS COUNTY RECORDER

FEE 8.00

BY: *Judith Wells*
DEPUTY

FILE NO. #2015-0001160



MONUMENT NOTES

- 1" IRON PIPE WITH PLASTIC PLUG STAMPED "LS 6431" IN A MOUND OF STONE. ONE BEARING TREE IN PLACE PER 11 RS 60. ACCEPTED AS THE SECTION CORNER.
- 1" IRON PIPE WITH PLASTIC PLUG STAMPED "LS 6431" PER 11 RS 60. NOT ACCEPTED AS BEING ON THE 5TH STANDARD PARALLEL.
- GRANITE STONE WITH SIMILAR DIMENSIONS AS GLO IN A MOUND OF VOLCANIC STONE. ONE BEARING TREE IN PLACE. SET 5/8" REBAR WITH 1-1/2" ALUMINUM CAP STAMPED "LS 5712".
- MOUND OF VOLCANIC STONE WITH ONE BEARING TREE IN PLACE. SET 5/8" REBAR WITH 1-1/2" ALUMINUM CAP STAMPED "LS 5712".
- VOLCANIC STONE WITH SIMILAR DIMENSIONS AS GLO IN A MOUND OF STONE. ONE BEARING TREE IS DEAD AND DOWN. SET 5/8" REBAR WITH 1-1/2" ALUMINUM CAP STAMPED "LS 5712".
- VOLCANIC STONE WITH SIMILAR DIMENSIONS AS GLO IN A MOUND OF VOLCANIC STONE IN AN ANCIENT EAST - WEST FENCE LINE. SET 5/8" REBAR WITH 1-1/2" ALUMINUM CAP STAMPED "LS 5712".

LEGEND

- SET 5/8" REBAR W/ 1-1/2" ALUMINUM CAP STAMPED "LS 5712" OR AS NOTED OTHERWISE
- FOUND MONUMENT AS DESCRIBED IN MONUMENT NOTES
- (1) - RECORD INFORMATION PER 1874 GLO SURVEY
- (2) - RECORD INFORMATION PER 1879 GLO SURVEY
- (3) - RECORD INFORMATION PER 11 RS 60
- GLO - GOVERNMENT LAND OFFICE
- x— FENCE LINE

RECORD OF SURVEY

THE EAST 1/2 OF THE SOUTHWEST 1/4 OF SECTION 35, T 26 N, R 15 E, MDM.

IN THE UNINCORPORATED AREA OF PLUMAS COUNTY, CALIFORNIA

THE NATURE CONSERVANCY

MATLEY RANCH
DOC NO. 2004-0001629

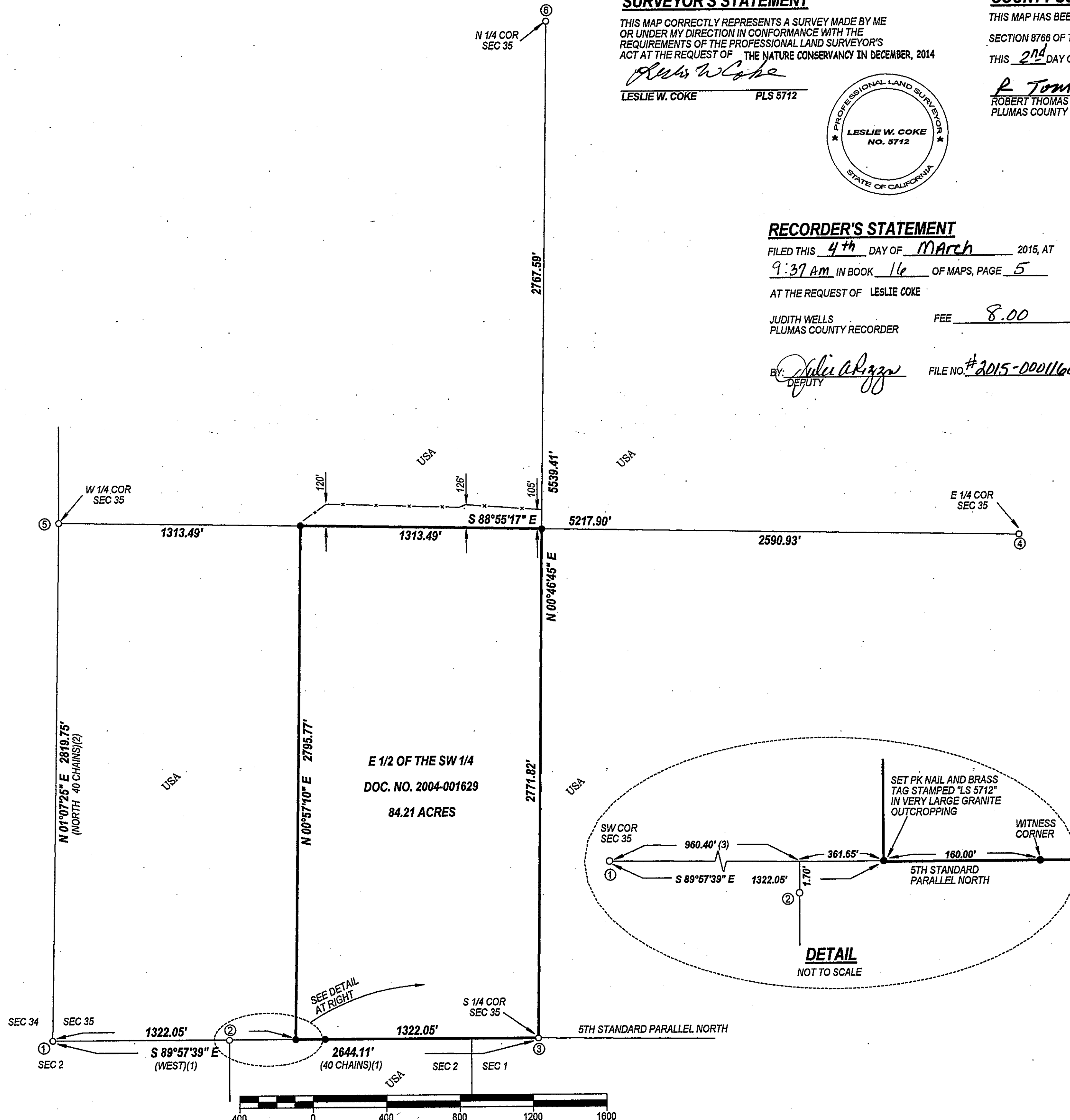
PRECISION SURVEYING

1165 HOFF WAY, #204 ORLAND, CALIFORNIA 95963 530-865-4194

DATE
DECEMBER, 2014

SCALE
1" = 400'

SHEET
1 OF 1



BASIS OF BEARINGS
WGS 84 AS DETERMINED BY
GPS OBSERVATIONS AT THE
SOUTH 1/4 CORNER OF SEC 35