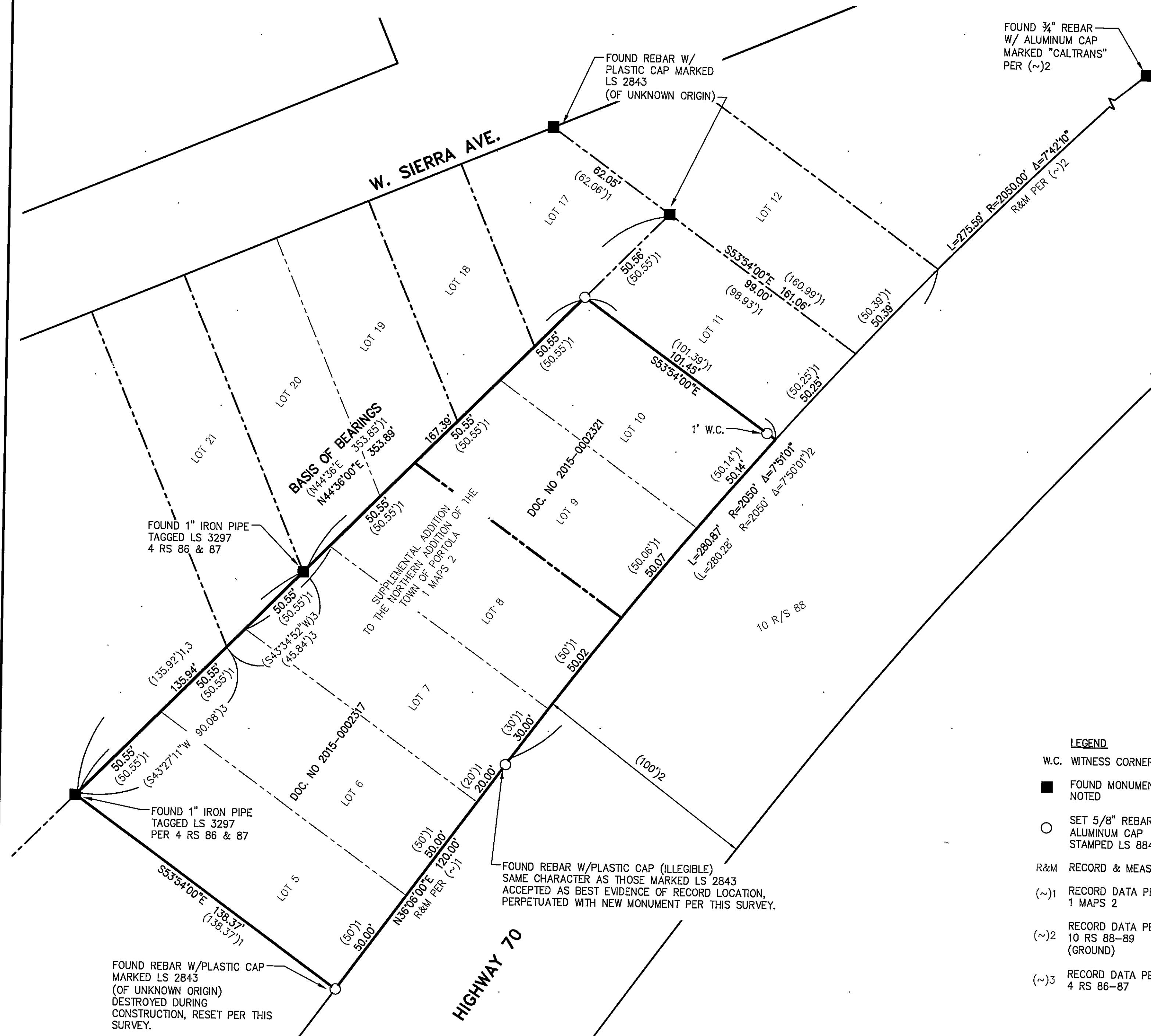


T.23N., R.13E. M.D.M.  
SECTION 36



**BASIS OF BEARINGS**

THE BASIS OF BEARINGS FOR THIS SURVEY IS THE NORTH LINE OF LOTS 5-11 OF BLOCK B OF THE SUPPLEMENTAL ADDITION TO THE NORTHERN ADDITION OF THE TOWN OF PORTOLA, RECORDED IN BOOK 1 OF MAPS, PAGE 2.

**SURVEYOR'S STATEMENT**

THIS MAP CORRECTLY REPRESENTS A SURVEY MADE BY ME OR UNDER MY DIRECTION IN CONFORMANCE WITH THE REQUIREMENTS OF THE PROFESSIONAL LAND SURVEYORS ACT AT THE REQUEST OF EMBREE ASSET GROUP, INC., IN DECEMBER 2015.

*Nathaniel D. Sellers*  
NATHANIEL D. SELLERS  
LICENSED LAND SURVEYOR, LS 8848

1/26/16  
DATE



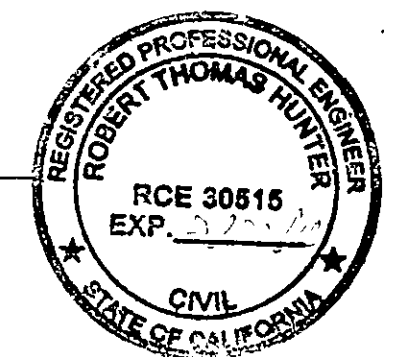
**COUNTY SURVEYOR'S STATEMENT**

THIS MAP HAS BEEN EXAMINED IN ACCORDANCE WITH SECTION 8766 OF THE PROFESSIONAL LAND SURVEYORS ACT THIS 23rd DAY OF February 2016.

*Robert Thomas Hunter*  
PLUMAS COUNTY SURVEYOR

BY: *Tom Hunter*  
COUNTY SURVEYOR  
AGE 30515

2/5/2016  
DATE



**RECORDER'S STATEMENT**

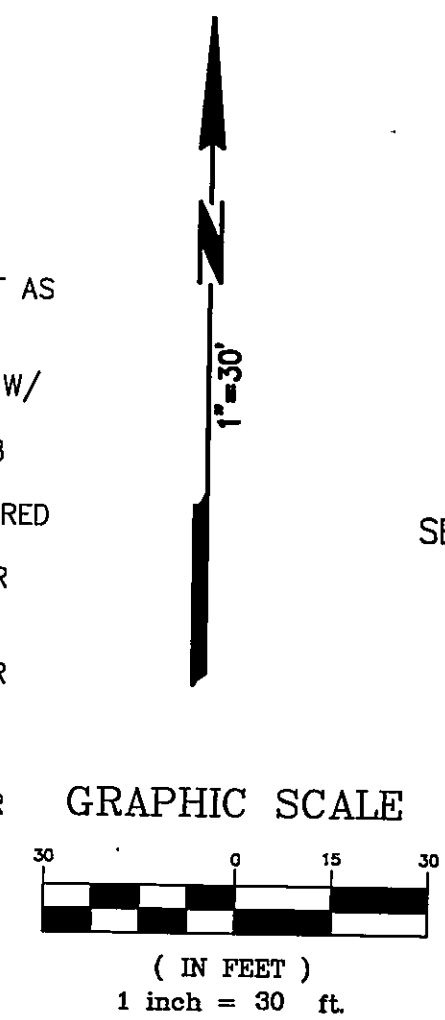
FILED THIS 9th DAY OF February, 2016, AT 10:17 A.M., IN BOOK 16 OF RECORD OF SURVEYS AT PAGE 9, AT THE REQUEST OF PACE ENGINEERING, INC.

*Kathy Williams*  
KATHY WILLIAMS  
PLUMAS COUNTY RECORDER

DOCUMENT NUMBER 2016-697  
FEE \$800

BY: *Joe Clift*  
DEPUTY

- LEGEND**
- W.C. WITNESS CORNER
  - FOUND MONUMENT AS NOTED
  - SET 5/8" REBAR W/ ALUMINUM CAP STAMPED LS 8848
  - R&M RECORD & MEASURED
  - (~)1 RECORD DATA PER 1 MAPS 2
  - (~)2 RECORD DATA PER 10 RS 88-89 (GROUND)
  - (~)3 RECORD DATA PER 4 RS 86-87



**RECORD OF SURVEY  
FOR  
EMBREE ASSET GROUP, INC.**

A SURVEY OF LOTS 5-10 PER 1 MAPS 2 SECTION 36, TOWNSHIP 23 NORTH, RANGE 13 EAST M.D.M. IN THE CITY OF PORTOLA, PLUMAS COUNTY, CALIFORNIA

PREPARED BY



JANUARY, 2016 SHEET 1 OF 1

JOB #2444.02

16 RS 9