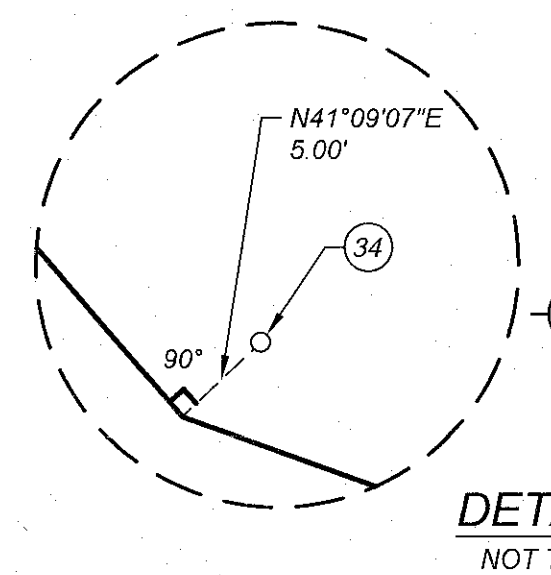
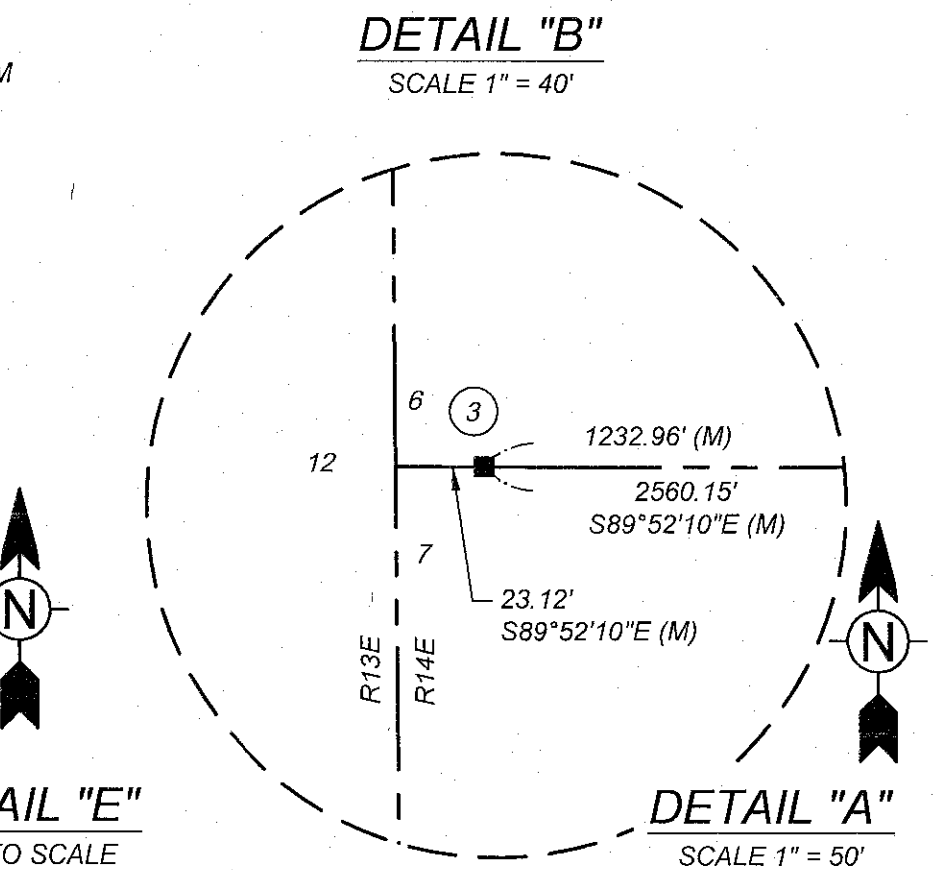
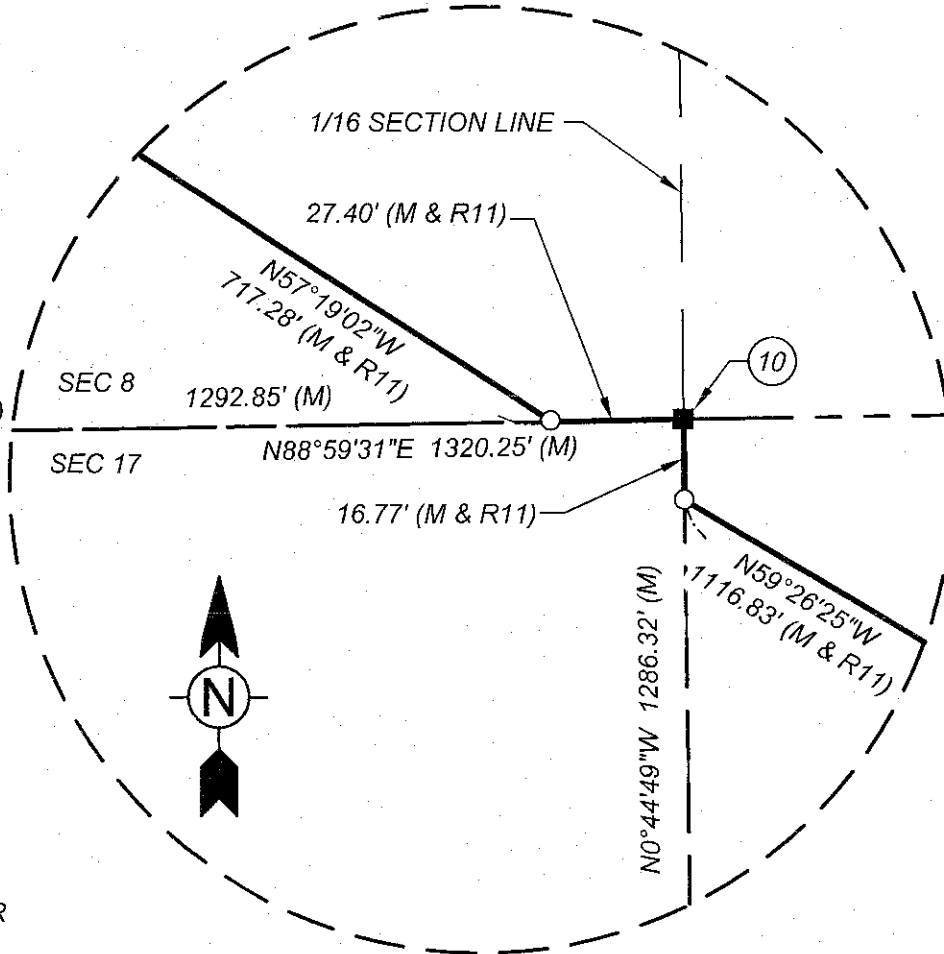
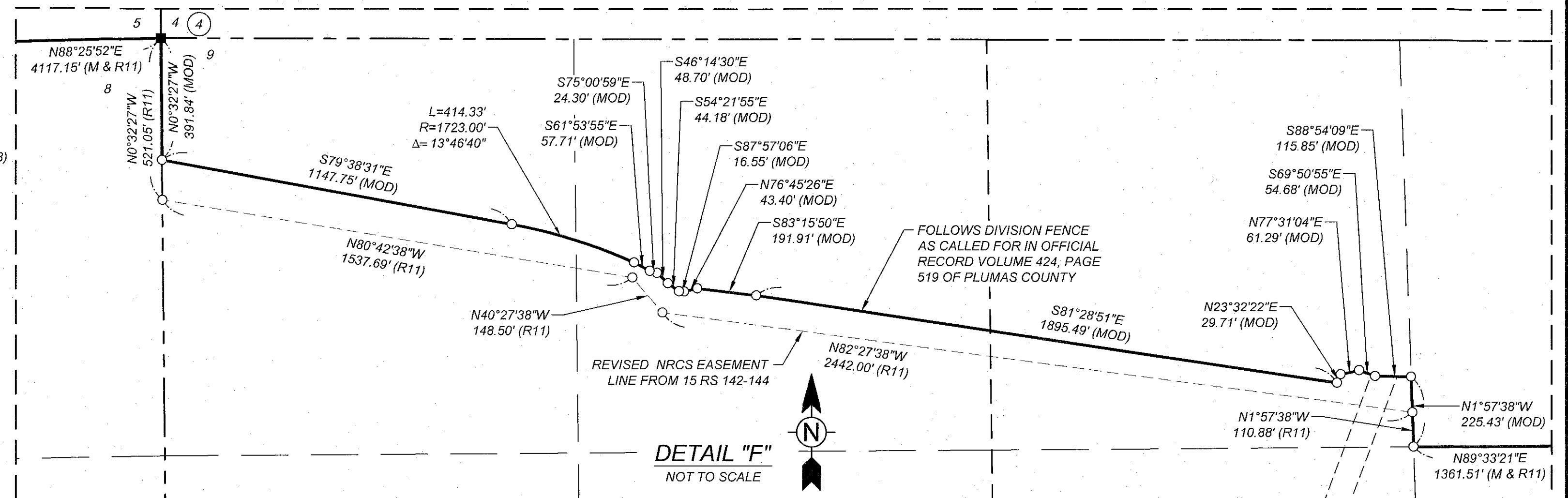


MONUMENT NOTES

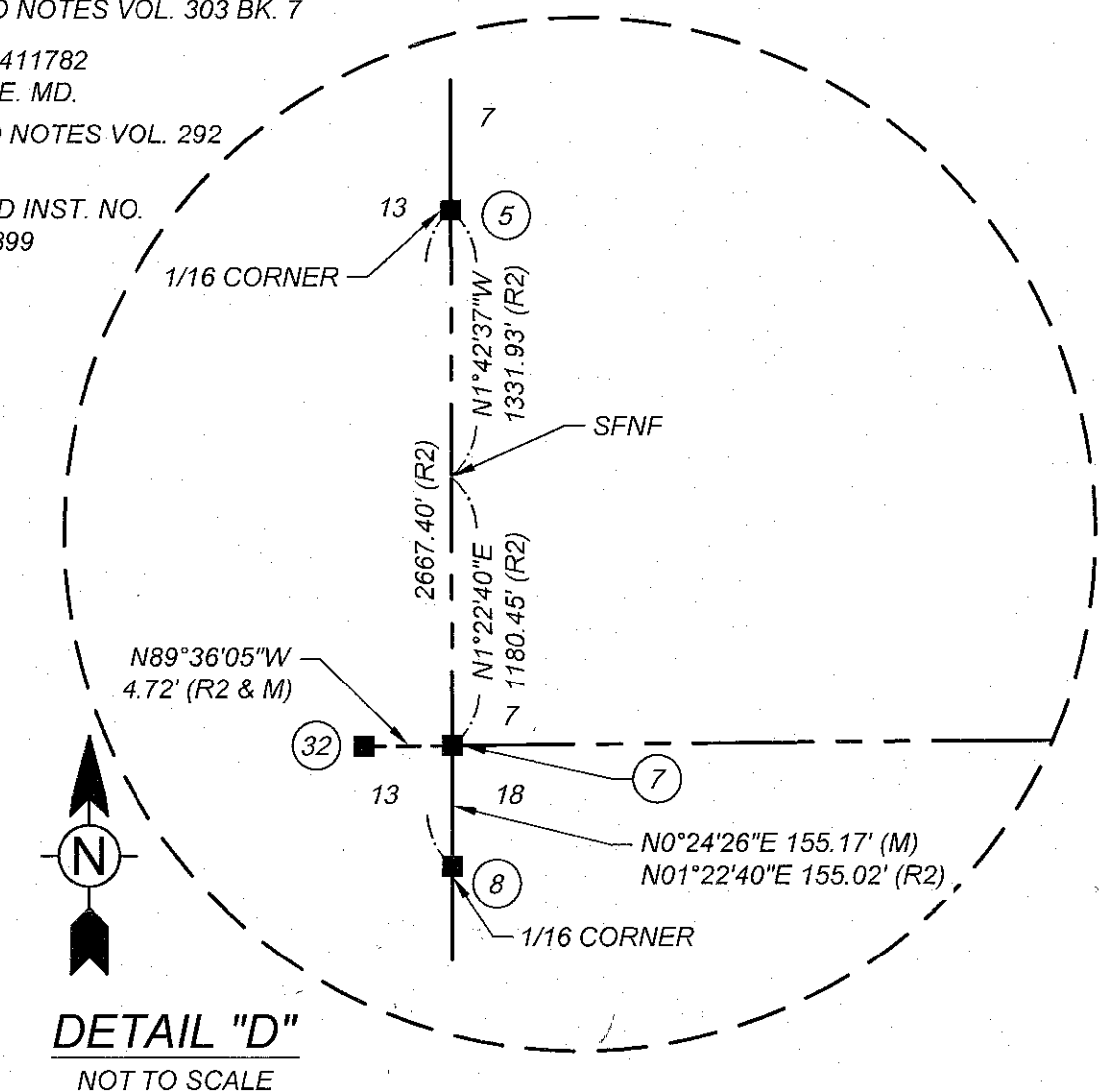
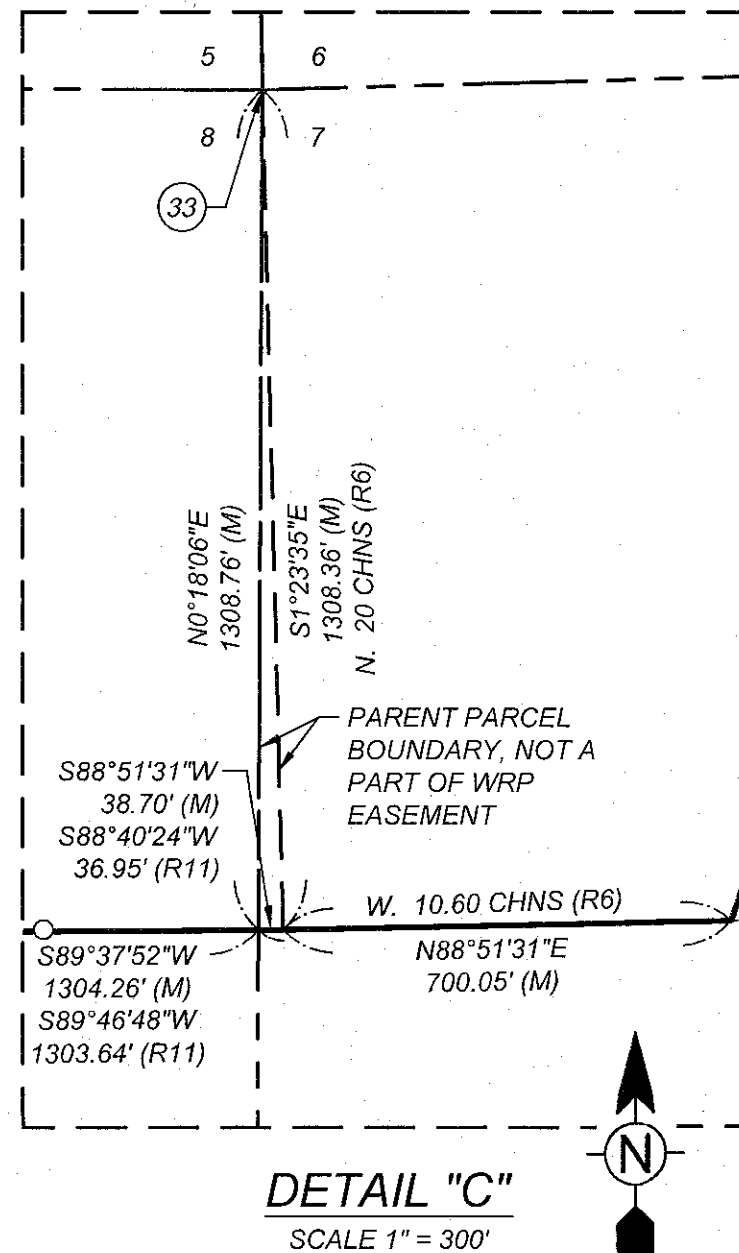
- 1 FOUND DWR BRASS CAP IN ROCK MOUND STAMPED "SECTION CORNER 6, 31, 1, LS 3181, 1969, CC", NO RECORD, ACCEPTED AS CLOSING CORNER
- 2 FOUND ROCK MOUND PER (R8), ACCEPTED AS SECTION CORNER
- 3 FOUND DWR BRASS CAP STAMPED "SECTION CORNER 6,7,12, LS 3181, 1969, CC", NO RECORD, ACCEPTED AS CLOSING CORNER
- 4 FOUND DWR BRASS CAP STAMPED "SECTION CORNER 4,5,8,9, LS 3181, 1969", AS FOUND PER (R3)
- 5 FOUND DWR BRASS CAP STAMPED "N 1/16 S13, WC 41.48FT, LS 5623, RM", PER (R2), USED RECORD BEARING AND DISTANCE FROM FOUND MONUMENT FOR LOCATION OF ACTUAL 1/16 CORNER USED TO ESTABLISH THE WEST LINE OF SECTION 7
- 6 FOUND DWR BRASS CAP STAMPED "1/4 SECTION 7,8, LS 3181, 1969", NO RECORD
- 7 FOUND USFS ALUMINUM CAP STAMPED "SECTION CORNER 7, 18, 13, LS 5623, 1989, CC" SET AS TRUE CORNER PER (R2), ACCEPTED AS TRUE CORNER
- 8 FOUND USFS ALUMINUM CAP STAMPED "S 1/16 S13, LS 5623, 1989" PER (R2)
- 9 FOUND DWR BRASS CAP IN MOUND OF STONES STAMPED "SECTION CORNER 7, 8, 10, 17, LS 3181, 1969" AS FOUND PER (R2)
- 10 FOUND USFS ALUMINUM CAP STAMPED "W 1/16 SECTIONS 8, 17, LS 5623, 1989", PER (R2)
- 11 FOUND DWR BRASS CAP IN ROCK MOUND AS FOUND PER (R2), ACCEPTED AS QUARTER CORNER
- 12 FOUND DWR BRASS CAP STAMPED "SECTION CORNER 8, 9, 17, 16" PER (R1)
- 13 FOUND USFS ALUMINUM CAP STAMPED "N 1/16 S 18, 17, LS 5623, 1989", PER (R2)
- 14 FOUND USFS ALUMINUM CAP STAMPED "NW 1/16 S17, LS 5623, 1989, PER (R2)
- 15 FOUND USFS ALUMINUM CAP STAMPED "N 1/16 S17, LS 5623, 1989", PER (R2)
- 16 FOUND USFS ALUMINUM CAP STAMPED "NE 1/16 S17, LS 5623, 1989", PER (R2)
- 17 FOUND USFS ALUMINUM CAP STAMPED "CE 1/16 S17, LS 5623, 1989", PER (R2)
- 18 FOUND DWR BRASS CAP STAMPED "1/4 SECTION 17, 16, LS 3181, 1969", AS FOUND PER (R2)
- 19 FOUND ALUMINUM CAP STAMPED "1/4 SECTION 9, 4, LS 2843, 2000", PER (R3)
- 20 FOUND USFS ALUMINUM CAP STAMPED "SECTION CORNER 3, 4, 9, 10, LS 5623, 1993", AS FOUND PER (R3)
- 21 FOUND REBAR AND CAP STAMPED "PNF CONTROL" IN ROCK MOUND PER (R4), ACCEPTED AS QUARTER CORNER
- 22 FOUND 1/2" IRON PIPE IN ROCK MOUND PER (R4), ACCEPTED AS QUARTER CORNER
- 23 FOUND USFS ALUMINUM CAP IN ROCK MOUND STAMPED "SW 1/16 S10, LS 5623, 1993", NO RECORD
- 24 FOUND REBAR AND CAP, ILLEGIBLE, NO RECORD, ACCEPTED AS QUARTER CORNER
- 25 FOUND USFS ALUMINUM CAP STAMPED "SECTION CORNER 9, 10, 16, 15, LS 5623, 1988", PER (R1)
- 26 FOUND USFS ALUMINUM CAP STAMPED "1/4 SECTION 10, 15, LS 5623, 1988" PER (R1)
- 27 FOUND USFS ALUMINUM CAP STAMPED "W 1/16 S16, LS 5623, 1988", PER (R1)
- 28 FOUND USFS ALUMINUM CAP IN ROCK MOUND STAMPED "1/4 SECTION 16, 15, RCE 21673, 1977", PER (R1)
- 29 FOUND USFS ALUMINUM CAP IN ROCK MOUND STAMPED "SW 1/16 S15, LS 5623, 1988", PER (R1)
- 30 FOUND USFS ALUMINUM CAP STAMPED "SECTION CORNER 15, 16, 21, 22, RCE 21673, 1977", PER (R7)
- 31 FOUND USFS ALUMINUM CAP IN ROCK MOUND STAMPED "1/4 SECTION 15, 22, RCE 21673, 1977", PER (R7)
- 32 FOUND DWR BRASS CAP STAMPED "LS 3181", 1969, CC", AS FOUND PER (R2), STAMPED "AM" PER (R2), ACCEPTED AS ORIGINAL CLOSING CORNER
- 33 CORNER ESTABLISHED BY DOUBLE PROPORTION, NOTHING FOUND, NOTHING SET
- 34 SET 5/8" REBAR & 1-1/2" ALUMINUM CAP, STAMPED "LS 8925" THAT BEARS N°41°09'07"E 5.00' FROM ACTUAL PROPERTY CORNER



LEGEND

- FOUND MONUMENT AS NOTED, SEE SHEET 3 FOR MONUMENT DESCRIPTIONS
- SET 5/8" REBAR & 1-1/2" ALUMINUM CAP, STAMPED "L.S. 8925" OR AS NOTED
- SFNF SEARCHED FOR, NOT FD., NOTHING SET
- CHNS. CHAINS
- (M) MEASURED AND RECORDED
- (MOD) MODIFIED COURSE
- (R1) 9 RS 59-61
- (R2) 9 RS 90-94
- (R3) 11 RS 146
- (R4) GLO FIELD NOTES VOL. 292 BK. 20, PG 22-36

- (R5) 424 OR 519
- (R6) 283 OR 144
- (R7) 5 RS 80
- (R8) GLO FIELD NOTES VOL. 303 BK. 7
- (R9) GLO MAP 411782 T24N. R14E. MD.
- (R10) GLO FIELD NOTES VOL. 292 BK. 21
- (R11) RECORDED INST. NO. 2013-0008899



AMENDMENT TO RECORD OF SURVEY BOOK 15, SHEET 142

WETLAND RESERVE PROGRAM EASEMENT
 NO. 66-9104-2-536 PER WARRANTY EASEMENT DEED
 RECORDED DECEMBER 12, 2013 AS INST. NO. 2013-0008899
 BEING A PORTION OF SECTIONS 7, 8, 9, 10, 15, 16, 17, AND 18,
 TOWNSHIP 24 NORTH, RANGE 14 EAST, M.D.B. & M., IN THE COUNTY
 OF PLUMAS, STATE OF CALIFORNIA

16 RS 24