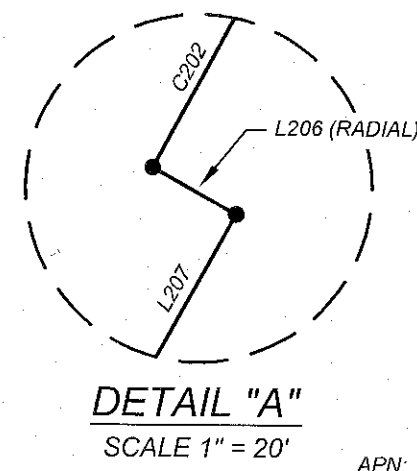
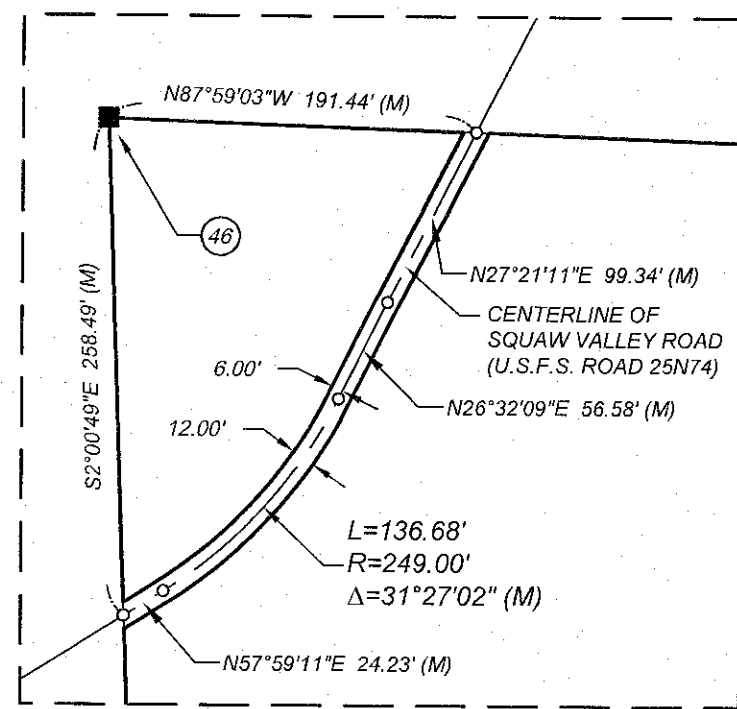
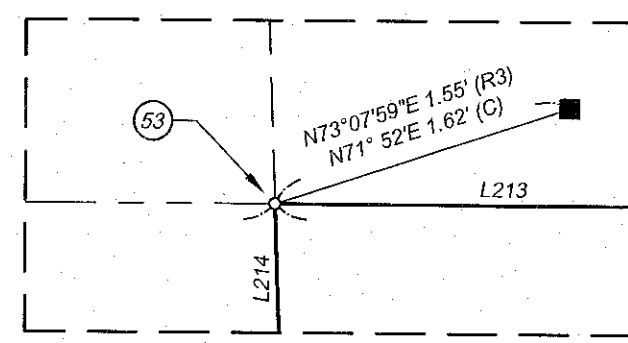


REFERENCES

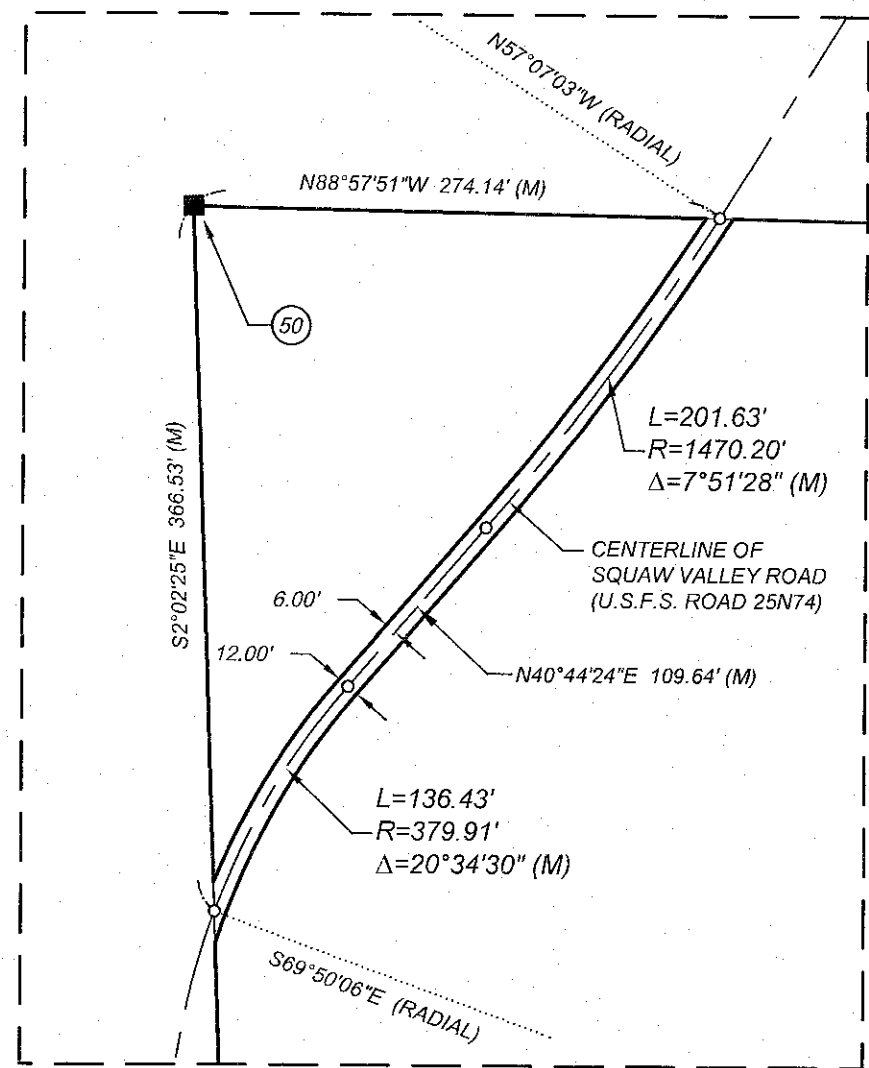
(R1) 9 RS 59-61
 (R3) 11 RS 146
 (R4) GLO FIELD NOTES,
 VOL. 292 BK. 20, PG 22-36
 (R12) 15 RS 142-144
 NOTE, RECORD DISTANCES HAVE
 BEEN CONVERTED TO GRID FOR
 EASE OF COMPARISON.



DETAIL "E"
SCALE 1" = 100'



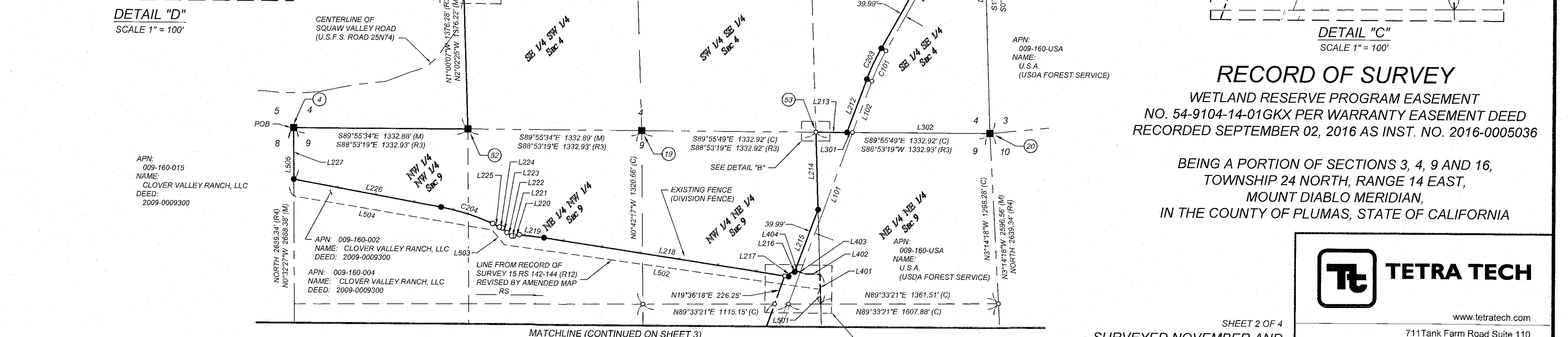
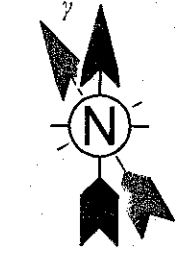
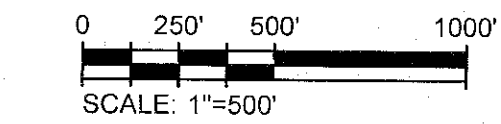
DETAIL "B"
SCALE 1" = 1'



DETAIL "D"
SCALE 1" = 100'

LEGEND

- FOUND MONUMENT
- ⊗ CORNER DESIGNATION, REFER TO SHEET 1 FOR CORNER NOTES
- SET 5/8" REBAR & 1-1/2" ALUMINUM CAP STAMPED "L.S. 8925"
- CALCULATED POINT, NOT SET
- SFNF SEARCHED FOR, NOT FOUND
- (M) MEASURED
- (C) CALCULATED
- L123 / C123 LINE / CURVE LABEL, SEE SHEET 4 FOR TABLE
- γ CONVERGENCE ANGLE
- SECTION LINE
- QUARTER SECTION LINE
- SIXTEENTH SECTION LINE
- PARENT PARCEL LINE
- ROAD CENTERLINE
- NRCS WETLAND RESERVE EASEMENT BOUNDARY LINE
- NRCS ACCESS EASEMENT CENTERLINE
- REVISED NRCS EASEMENT LINE FOR 15 RS 142-144 AS SHOWN ON AMENDED MAP RS
- FENCE LINE



RECORD OF SURVEY
 WETLAND RESERVE PROGRAM EASEMENT
 NO. 54-9104-14-01GKX PER WARRANTY EASEMENT DEED
 RECORDED SEPTEMBER 02, 2016 AS INST. NO. 2016-0005036
 BEING A PORTION OF SECTIONS 3, 4, 9 AND 16,
 TOWNSHIP 24 NORTH, RANGE 14 EAST,
 MOUNT DIABLO MERIDIAN,
 IN THE COUNTY OF PLUMAS, STATE OF CALIFORNIA



SHEET 2 OF 4
 SURVEYED NOVEMBER AND
 DECEMBER 2014 AND FEBRUARY 2015

www.tetrattech.com
 711 Tank Farm Road Suite 110
 San Luis Obispo, CA 93401
 (805) 542-9052

16 RS 26