

BASIS OF BEARING

BEARINGS HEREON ARE BASED UPON THE CALIFORNIA STATE PLANE COORDINATE SYSTEM OF ZONE 1, NORTH AMERICAN DATUM OF 1983 (NAD83) (NSRS2007), 2011.00 EPOCH, CSRC STATIONS BASED LOCALLY ON CORS P344, CORS P671 AND CORS P148 WHICH ARE PART OF THE CALIFORNIA SPATIAL REFERENCE NETWORK (CSRN). ALL BEARINGS AND DISTANCES SHOWN HEREON ARE GRID, TO OBTAIN GROUND DISTANCES DIVIDE THE GRID DISTANCE BY THE COMBINED GRID FACTOR.

BASIS OF GEODETIC CONTROL AND HORIZONTAL DATUM

THE BASIS FOR GEODETIC HORIZONTAL CONTROL FOR THIS SURVEY USED THREE GPS CONTINUOUSLY OPERATING REFERENCE STATIONS (CORS): GOATMTN_CN2006 CORS ARP, CORS_ID P148 (NGS PID DN7524) SIFFORDMTCN2008 CORS ARP, CORS_ID P671 (NGS PID DN5671) VINAHELITKCN2006 CORS ARP, CORS_ID P344 (NGS PID DN5654)

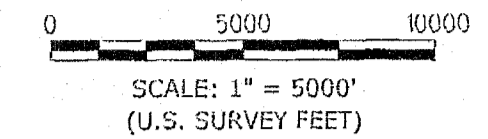
DATASHEETS CAN BE FOUND ON THE NATIONAL GEODETIC SURVEY (NGS) AND THE CALIFORNIA SPATIAL REFERENCE CENTER (CSRC) WEBSITES.

THE ESTABLISHMENT AND COORDINATE VALUES FOR EACH POINT IN THIS CONTROL NETWORK IS IN TERMS OF THE CALIFORNIA COORDINATE SYSTEM, ZONE 1, NORTH AMERICAN DATUM OF 1983 (NAD83) (NSRS2007), 2011.00 EPOCH, CSRC STATION.

HELD CORS STATIONS AND COORDINATES

CORS ID	NAD LAT (dms)	NAD LON (dms)	NADLat sig (m)	NADLon sig (m)
P148	40° 25' 06.902757"	-120° 48' 21.406729"	0.0003	0.0003
P671	40° 24' 32.894221"	-121° 25' 41.495390"	0.0013	0.0012
P344	39° 55' 44.829873"	-122° 01' 40.644342"	0.0003	0.0003

CONVERGENCE ANGLE AT 103 = 00° 35' 49.74"
GRID AZIMUTH = GEODETIC AZIMUTH-CONVERGENCE



LEGEND

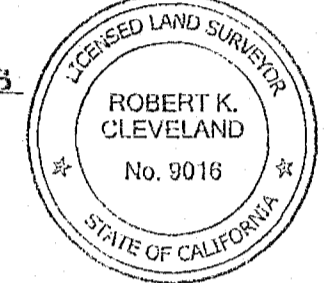
- - - - - APPROXIMATE ROAD CENTERLINE
- - - - - APPROXIMATE COUNTY BOUNDARY LINE
- — — — — CONTOUR LINES PER DEEDS
- ▲ CONTINUOUSLY OPERATING REFERENCE STATION (CORS)
- △ FOUND MONUMENT AS DESCRIBED, SEE SHEET 2

SURVEYOR'S STATEMENT

THIS MAP CORRECTLY REPRESENTS A SURVEY MADE BY ME OR UNDER MY DIRECTION IN CONFORMANCE WITH THE REQUIREMENTS OF THE PROFESSIONAL LAND SURVEYORS ACT AT THE REQUEST OF PACIFIC GAS AND ELECTRIC COMPANY IN OCTOBER, 2017.

Robert K. Cleveland
ROBERT K. CLEVELAND L.S. 9016

DATE 2/14/2018



COUNTY SURVEYOR'S STATEMENT

THIS MAP HAS BEEN EXAMINED IN ACCORDANCE WITH SECTION 2766 OF THE PROFESSIONAL LAND SURVEYORS ACT THIS 28 Feb, 2018.

Robert Thomas Hunter
ROBERT THOMAS HUNTER RCE 30515
PLUMAS COUNTY SURVEYOR
EXP. 3/3/2018



RECORDER'S STATEMENT

FILED THIS 8th DAY OF MARCH, 2018, AT 2:21 P.M. IN BOOK 16 OF RECORD OF SURVEYS, AT PAGE 33-34, AT THE REQUEST OF PACIFIC GAS AND ELECTRIC COMPANY.

SEE: \$10.00

Kathleen Williams
KATHLEEN WILLIAMS, PLUMAS COUNTY RECORDER

**RECORD OF SURVEY FOR
PACIFIC GAS AND
ELECTRIC COMPANY**

IN THE TOWNS OF CHESTER, PRATTVILLE, CANYON DAM, WESTWOOD AND IN THE UNINCORPORATED TERRITORY OF THE COUNTIES OF PLUMAS AND LASSEN, STATE OF CALIFORNIA.

SHOWING A CONTROL SURVEY FOR CERTAIN LANDS LOCATED IN PORTIONS OF SECTIONS: 1, 2, 3, 11, 12 AND 13 OF TOWNSHIP 27 NORTH, RANGE 7 EAST; SECTIONS 2, 3, 4, 5, 8, 9, 10, 11, 14, 15, 16, 17, 18, 19, 20, 21, 22, 23, 25, 26, 27, 28, 29, 30, 32, 33, 34, 35, AND 36 OF TOWNSHIP 28 NORTH, RANGE 7 EAST; SECTIONS 28, 29, 32, AND 33 OF TOWNSHIP 29 NORTH, RANGE 7 EAST; SECTIONS 3, 4, 5, 6, 7, 8, 9, 10, 15, 16, 17, 18, 20, 21, 22, AND 28 OF TOWNSHIP 27 NORTH, RANGE 8 EAST; SECTIONS 13, 17, 18, 19, 20, 21, 24, 27, 28, 29, 30, 31, 32, 33, AND 34 OF TOWNSHIP 28 NORTH, RANGE 8 EAST; SECTIONS 7, 8, 9, 10, 13, 14, 15, 16, 17, 18, 19, 20, 21, 22, 23, 24, 25, 26, 27, 28, 35, AND 36 OF TOWNSHIP 28 NORTH, RANGE 9 EAST, ALL OF MOUNT DIABLO BASE AND MERIDIAN.

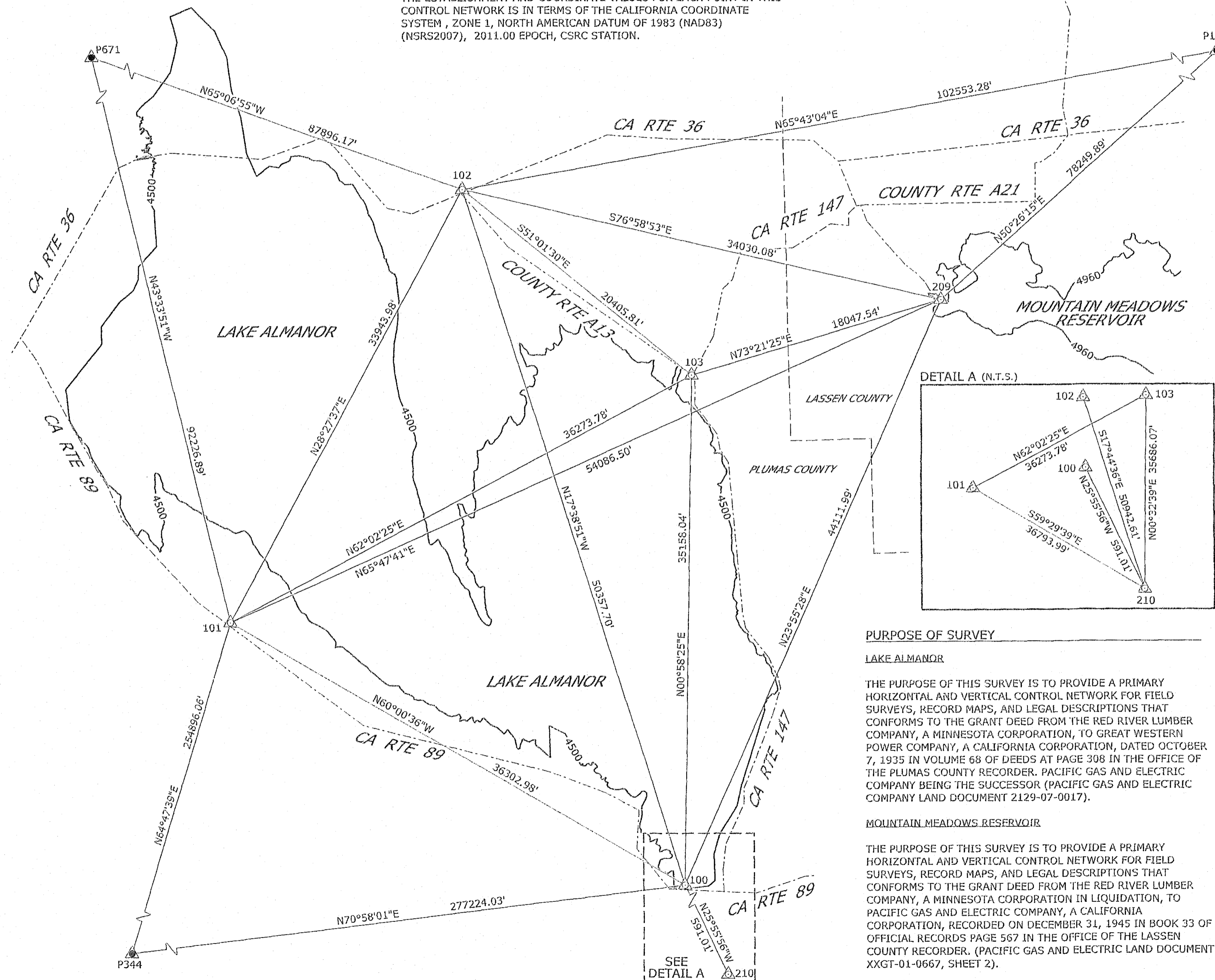


PACIFIC GAS AND ELECTRIC COMPANY
245 MARKET STREET
SAN FRANCISCO, CALIFORNIA

ORDER NO. 3022380

OCTOBER 2017

SHEET NO. 1 OF 2



PURPOSE OF SURVEY

LAKE ALMANOR

THE PURPOSE OF THIS SURVEY IS TO PROVIDE A PRIMARY HORIZONTAL AND VERTICAL CONTROL NETWORK FOR FIELD SURVEYS, RECORD MAPS, AND LEGAL DESCRIPTIONS THAT CONFORMS TO THE GRANT DEED FROM THE RED RIVER LUMBER COMPANY, A MINNESOTA CORPORATION, TO GREAT WESTERN POWER COMPANY, A CALIFORNIA CORPORATION, DATED OCTOBER 7, 1935 IN VOLUME 68 OF DEEDS AT PAGE 308 IN THE OFFICE OF THE PLUMAS COUNTY RECORDER. PACIFIC GAS AND ELECTRIC COMPANY BEING THE SUCCESSOR (PACIFIC GAS AND ELECTRIC COMPANY LAND DOCUMENT 2129-07-0017).

MOUNTAIN MEADOWS RESERVOIR

THE PURPOSE OF THIS SURVEY IS TO PROVIDE A PRIMARY HORIZONTAL AND VERTICAL CONTROL NETWORK FOR FIELD SURVEYS, RECORD MAPS, AND LEGAL DESCRIPTIONS THAT CONFORMS TO THE GRANT DEED FROM THE RED RIVER LUMBER COMPANY, A MINNESOTA CORPORATION IN LIQUIDATION, TO PACIFIC GAS AND ELECTRIC COMPANY, A CALIFORNIA CORPORATION, RECORDED ON DECEMBER 31, 1945 IN BOOK 33 OF OFFICIAL RECORDS PAGE 567 IN THE OFFICE OF THE LASSEN COUNTY RECORDER. (PACIFIC GAS AND ELECTRIC LAND DOCUMENT XXGT-01-0667, SHEET 2).

16 RS 33