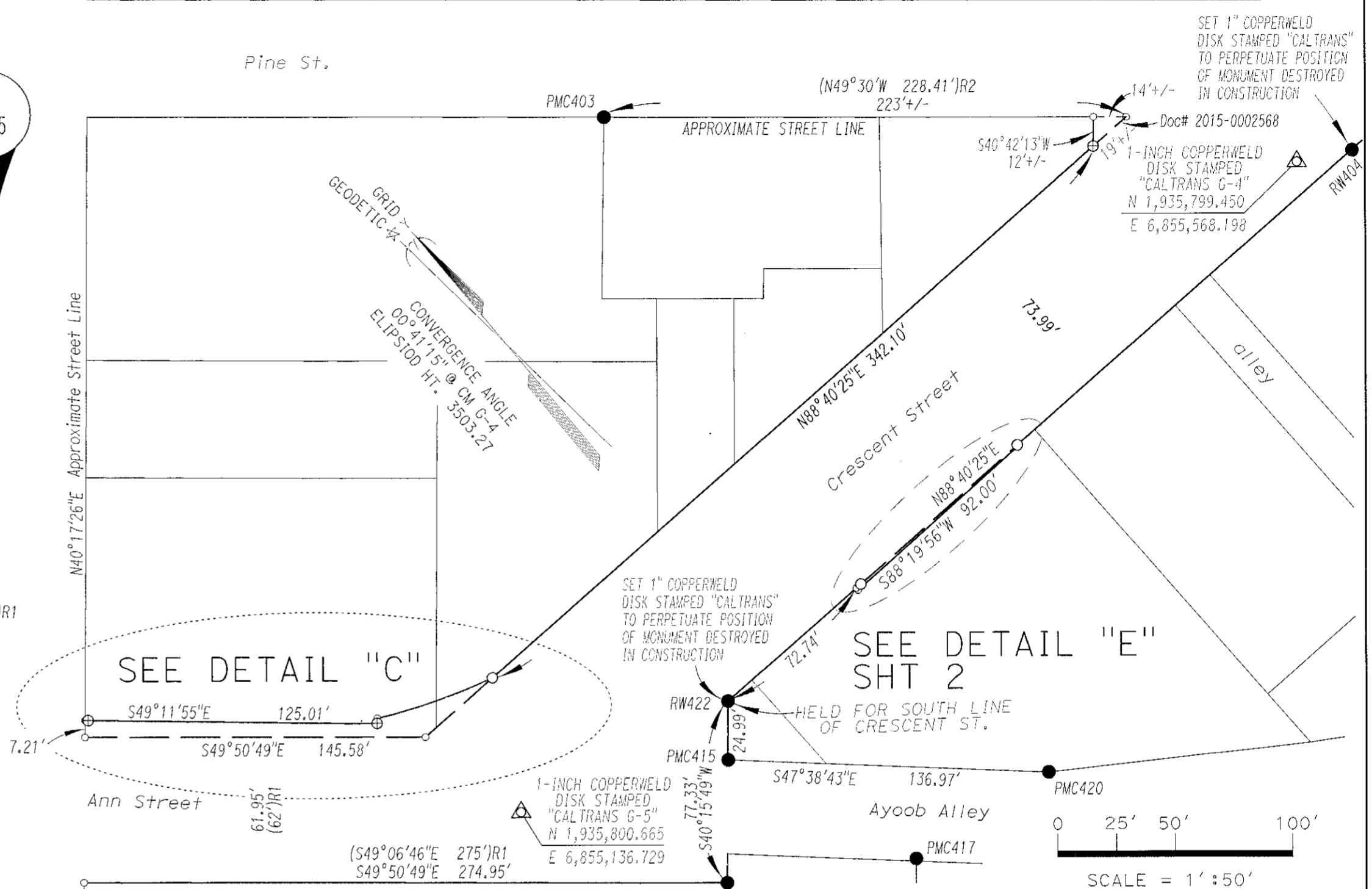
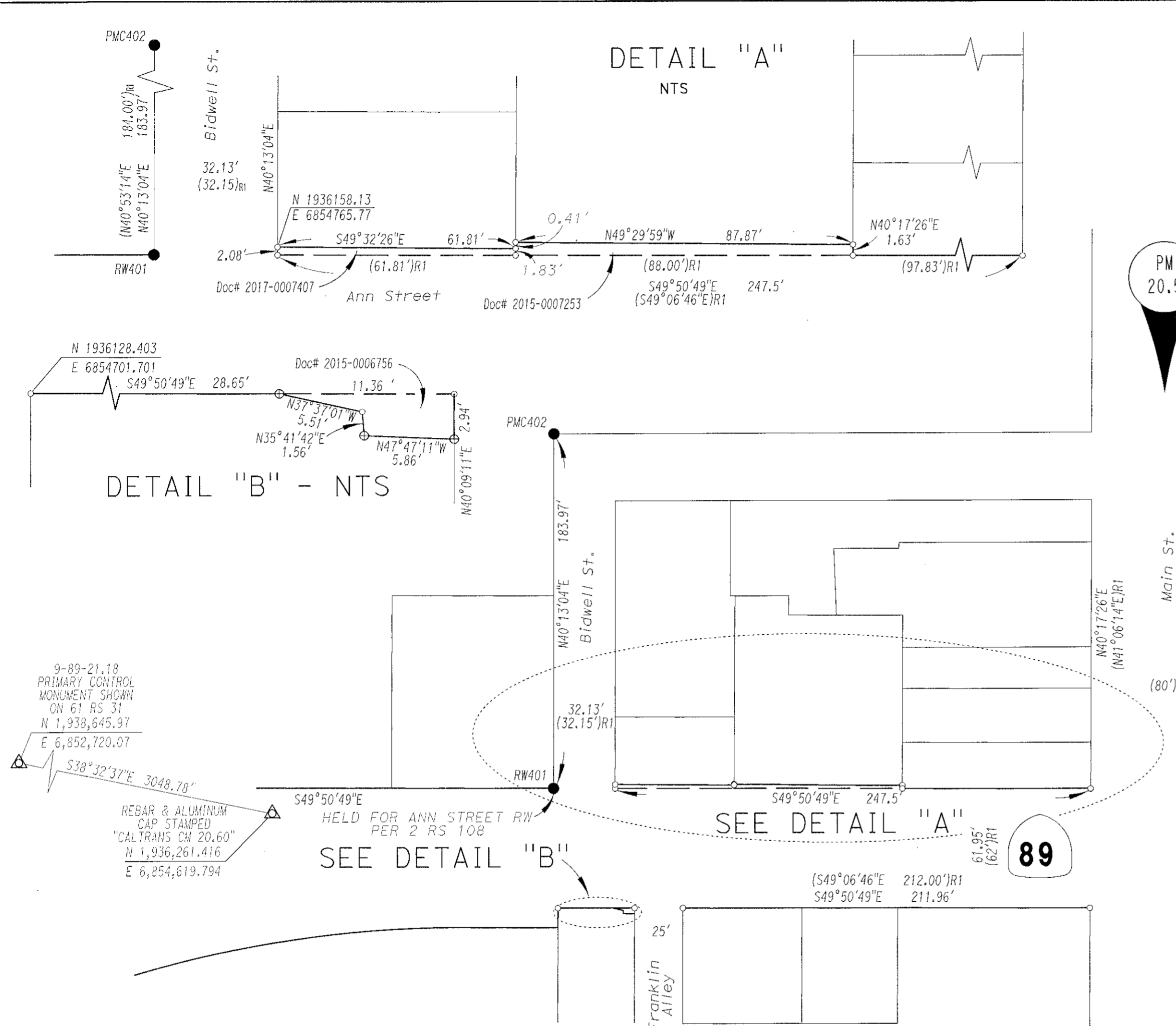


TOWN OF GREENVILLE  
T. 26 N., R. 9 E., M.D.M.  
SECTION 3

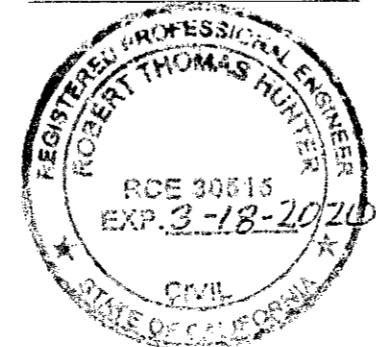


POINT #	COORDINATES	DESCRIPTION (* = NOT OF RECORD)	REFERENCE
	NORTH EAST		BK OF PG
RW401	1936177.28 6854739.90	1/2-INCH IRON PIPE, NO CAP	2 RS 108
PMC402	1936317.76 6854858.69	1/2-INCH IRON PIPE, NO CAP	2 RS 108
PMC403	1936004.37 6855354.68	1/2-INCH IRON ROD WITH RCE 22836 PLASTIC CAP	9 PM 93
PMC415	1935760.75 6855218.64	1/2-INCH REBAR WITH LS 4647 PLASTIC CAP	* * *
PMC417	1935677.02 6855252.68	1/2-INCH REBAR WITH ALUMINUM CAP RCE 13528	* * *
PMC420	1935668.47 6855319.86	1/2-INCH REBAR WITH ALUMINUM CAP RCE 13528	* * *
PMC421	1935720.94 6855184.67	3/4-INCH IRON PIPE, NO CAP	2 RS 108
RW404	1935788.00 6855589.42	1/2-INCH REBAR WITH PLASTIC CAP LS 4647	12 RS 13
RW422	1935779.95 6855234.65	3/8-INCH STEEL PIN, NO CAP	7 PM 1

**SURVEYOR'S STATEMENT**  
THIS MAP CORRECTLY REPRESENTS A SURVEY MADE BY ME OR UNDER MY DIRECTION IN CONFORMANCE WITH THE REQUIREMENTS OF THE PROFESSIONAL LAND SURVEYORS' ACT AT THE REQUEST OF THE STATE OF CALIFORNIA, DEPARTMENT OF TRANSPORTATION (CALTRANS) IN JANUARY 2018.  
*Gary D. Gogos*  
GARY GOGOS LS 7242



**COUNTY SURVEYOR'S STATEMENT**  
THIS MAP HAS BEEN EXAMINED IN ACCORDANCE WITH SECTION 8766 OF THE PROFESSIONAL LAND SURVEYORS' ACT THIS 23<sup>rd</sup> DAY OF March, 2018  
BY: *R. Tom Hunter*  
ROBERT THOMAS HUNTER  
COUNTY SURVEYOR



**RECORDER'S STATEMENT**  
FILED THIS 26<sup>th</sup> DAY OF March, 2018 AT 1:44 p.m.  
IN BOOK 16 RECORD OF SURVEYS AT PAGES 35-37 PLUMAS COUNTY RECORDS  
AT THE REQUEST OF CALIFORNIA DEPARTMENT OF TRANSPORTATION (CALTRANS)

Document No. 2018-0001395  
Fee: N/A  
*Julie Hagwood*  
KATHLEEN WILLIAMS  
COUNTY RECORDER  
BY: *Julie Hagwood*  
DEPUTY COUNTY RECORDER

**LEGEND**

- SET REBAR WITH ALUMINUM CAP STAMPED "CALTRANS" UNLESS OTHERWISE NOTED
- ⊕ SET 1" COPPERWELD DISK STAMPED "CALTRANS"
- FOUND MONUMENT AS NOTED
- CALC POINT, NOTHING SET
- △ CALTRANS CONTROL MONUMENT
- ( ) R1 RECORD PER 2 RS 108
- ( ) R2 RECORD PER 1 RS 96
- SUPERCEDED RIGHT OF WAY LINE

STATE OF CALIFORNIA  
CALIFORNIA STATE TRANSPORTATION AGENCY  
DEPARTMENT OF TRANSPORTATION  
DISTRICT 02  
**RECORD OF SURVEY  
OF MONUMENTATION**  
IN THE TOWN OF GREENVILLE  
TOWNSHIP 26 NORTH, RANGE 9 EAST, M.D.M.  
SECTIONS 2 & 3  
IN THE UNINCORPORATED AREA OF THE COUNTY  
OF PLUMAS, STATE OF CALIFORNIA, ALONG  
STATE HIGHWAY ROUTE 89 AT POST MILE 20.0 TO 20.5  
JANUARY, 2018 SHEET 1 OF 3