

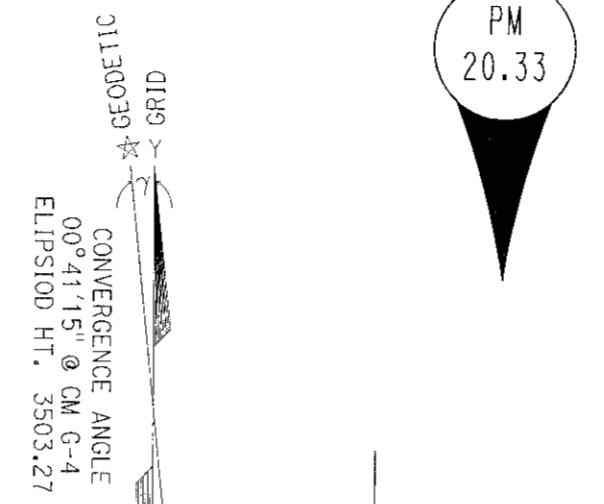
TOWN OF GREENVILLE
T. 26 N., R. 9 E., M.D.M.

SECTION 3

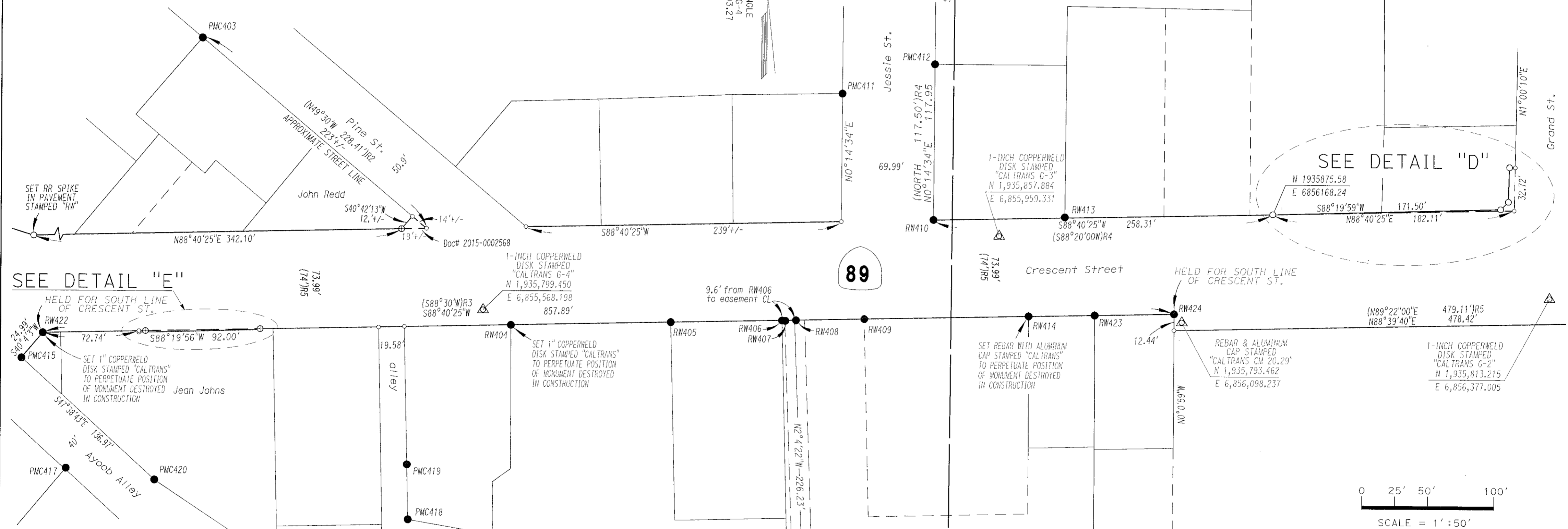
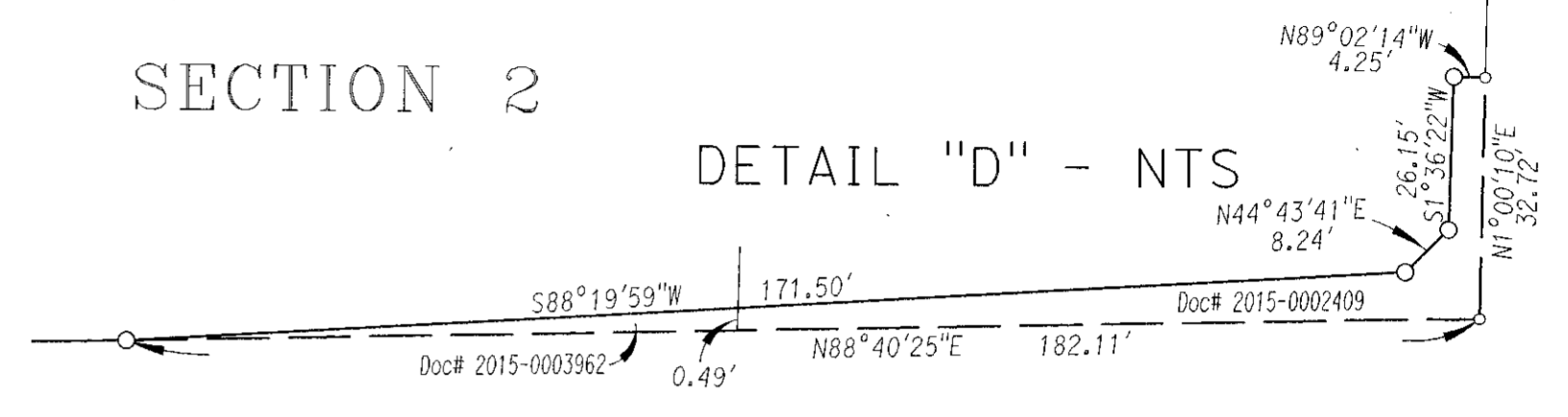
SECTION 2

DETAIL "D" - NTS

POINT #	COORDINATES		DESCRIPTION (* = NOT OF RECORD)	REFERENCE	
	NORTH	EAST		BK	OF PG
PMC403	1936004.37	6855354.68	1/2-INCH IRON ROD WITH RCE 22836 PLASTIC CAP	9	PM 93
PMC411	1935965.07	6855840.00	3/4-INCH IRON PIPE, NO CAP	5	PM 69
PMC412	1935987.78	6855910.08	1/2-INCH REBAR WITH RCE III73 PLASTIC CAP	5	PM 69
PMC415	1935760.75	6855218.64	1/2-INCH REBAR WITH LS 4647 PLASTIC CAP	*	* *
PMC417	1935677.02	6855252.68	1/2-INCH REBAR WITH ALUMINUM CAP RCE I3528	7	PM 7
PMC418	1935639.70	6855512.11	1/2-INCH IRON PIPE, NO CAP	7	PM 7
PMC419	1935681.31	6855511.17	3/4-INCH IRON PIPE, NO CAP	*	* *
PMC420	1935668.47	6855319.86	1/2-INCH REBAR WITH ALUMINUM CAP RCE I3528	*	* *
RW404	1935788.00	6855589.42	1/2-INCH REBAR WITH PLASTIC CAP LS 4647	12	RS 13
RW405	1935790.89	6855710.72	1/2-INCH REBAR WITH ILLEGIBLE PLASTIC CAP	7	PM 1
RW406	1935792.76	6855795.08	1/2-INCH REBAR WITH LS 4647 PLASTIC CAP	*	* *
RW407	1935792.61	6855797.62	3/4-INCH IRON PIPE, NO CAP	2	RS 92
RW408	1935793.02	6855805.66	1/2-INCH REBAR WITH PLASTIC CAP LS4647	12	RS 13
RW409	1935794.24	6855857.41	3/4-INCH REBAR WITH BRASS TAG LS 2702	2	RS 92
RW410	1935869.83	6855909.58	1/2-INCH REBAR WITH ILLEGIBLE PLASTIC CAP	5	PM 69
RW413	1935872.47	6856009.22	1/2-INCH REBAR WITH PLASTIC CAP RCE III73	5	PM 69
RW414	1935797.10	6855982.13	1/2-INCH REBAR WITH ILLEGIBLE PLASTIC CAP	7	PM 1
RW422	1935779.95	6855234.65	3/8-INCH STEEL PIN	7	PM 1
RW423	1935798.37	6856032.18	3/4-INCH REBAR, NO CAP	2	RS 92
RW424	1935799.81	6856092.31	1-INCH IRON PIPE, NO CAP	2	RS 92



PM 20.33

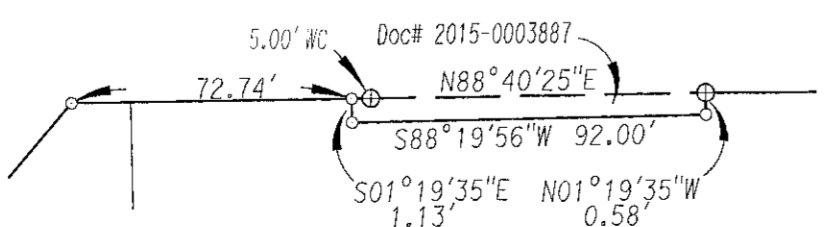


SEE DETAIL "E"

SEE DETAIL "D"

89

- LEGEND**
- SET REBAR WITH ALUMINUM CAP STAMPED "CALTRANS" UNLESS OTHERWISE NOTED
 - ⊙ SET 1" COPPERWELD DISK STAMPED "CALTRANS"
 - FOUND MONUMENT AS NOTED
 - CALC POINT, NOTHING SET
 - △ CALTRANS CONTROL MONUMENT
- () R2 RECORD PER 1 RS 96
() R3 RECORD PER 1 PM 96
() R4 RECORD PER 6 PM 5
() R5 RECORD PER 2 RS 92
--- SUPERCEDED RIGHT OF WAY LINE



DETAIL "E" - NTS

STATE OF CALIFORNIA
CALIFORNIA STATE TRANSPORTATION AGENCY
DEPARTMENT OF TRANSPORTATION
DISTRICT 02
**RECORD OF SURVEY
OF MONUMENTATION**
IN THE TOWN OF GREENVILLE
TOWNSHIP 26 NORTH, RANGE 9 EAST, M.D.M.
SECTIONS 2 & 3
IN THE UNINCORPORATED AREA OF THE COUNTY
OF PLUMAS, STATE OF CALIFORNIA, ALONG
STATE HIGHWAY ROUTE 89 AT POST MILE 20.0 TO 20.5
JANUARY, 2018 SHEET 2 OF 3

16 RS 36