

~ LEGEND ~

- Found Iron Pipe for property corner.
- Set 3/4" iron pipe, tagged "L.S. 3202" for corner.

SURVEYOR'S CERTIFICATE:

This map was prepared by me or under my direction and is based upon a field survey in conformance with the requirements of the Subdivision Map Act at the request of MIKE ROPCZYCKI in MAY, 1966.

I hereby certify that it conforms to the approved tentative map and the conditions of approval thereof; that all provisions of applicable State law and local ordinances have been complied with.

Paul E. Simpson
 PAUL E. SIMPSON, L.S. 3202

COUNTY SURVEYOR'S CERTIFICATE:

This map has been examined this 6th day of June 1966, for conformance with the requirements of Section 11575 of the Subdivision Map Act.

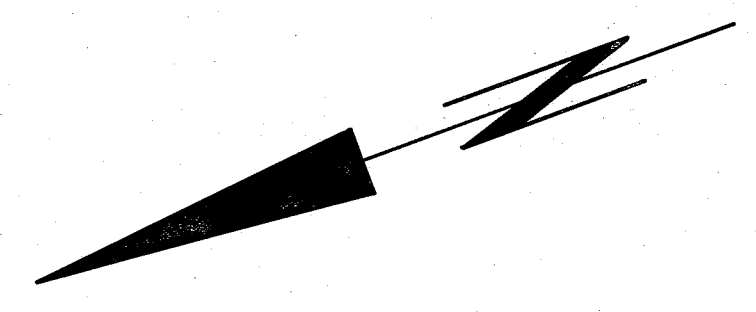
James F. Flanagan
 James F. Flanagan R.C.E 292
 Plumas County Surveyor

COUNTY RECORDER'S CERTIFICATE:

Filed for Record this 6th day of June 1966, at 2:45 p.m. in Book 1 of Parcel Maps at Page 26 at the request of Vandenberg & Simpson

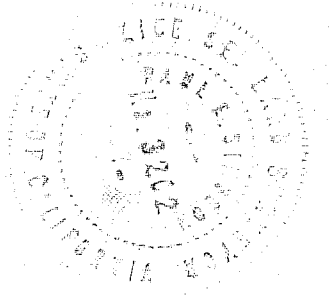
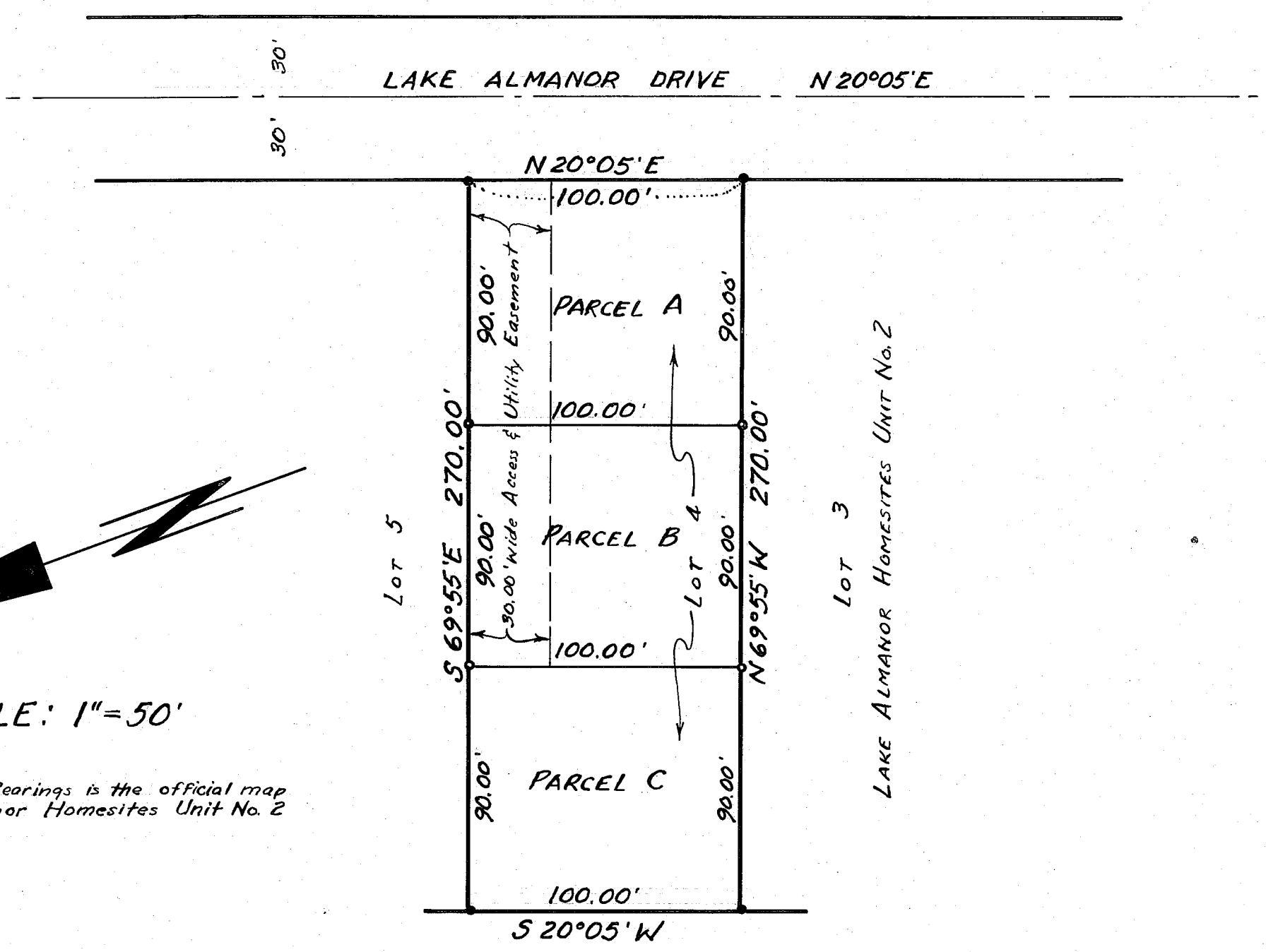
Fee: \$5.00
 File No. 4576

Ida Hogan Gronvold
 Ida Hogan Gronvold
 Plumas County Recorder.



SCALE: 1"=50'

Basis of Bearings is the official map of Lake Almanor Homesites Unit No. 2



PARCEL MAP FOR

MIKE ROPCZYCKI

OF LOT 4, LAKE ALMANOR HOMESITES UNIT NO. 2
 PLUMAS COUNTY, CALIFORNIA

SCALE: 1"=50'

VANDEMBERG & SIMPSON, ENGINEERS & SURVEYORS
 SUSANVILLE, CALIFORNIA