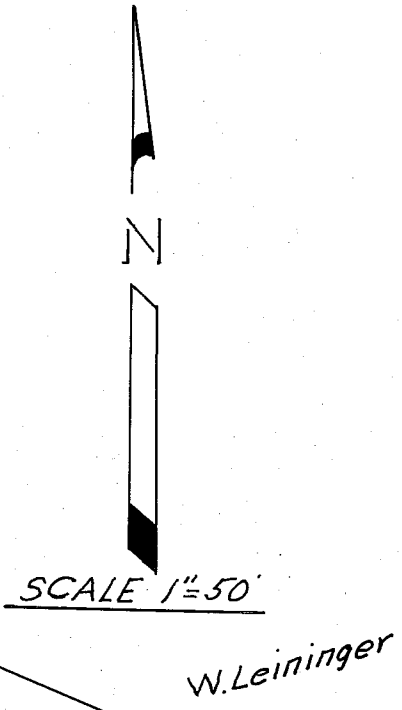


NOTE  
 Portion of Swamp and Overflowed  
 Land Survey No.30  
 Approx. Unsurveyed N.W. 1/4 Sec 21.  
 T.26N., R.10E. (M.D.M.)



- LEGEND
- R/W Right-of-Way
  - O.R. Official Records, Plumas County records
  - Bk. Book
  - p. Page
  - I.P.&T. Iron Pipe and Tag
  - o Set 1" Iron Pipe with brass tag stamped "John C. Simpson, R.C.E. 11173", except as noted.



SURVEYOR'S CERTIFICATE

This map was prepared by me or under my direction (and is based upon a field survey) in conformance with the requirements of the Subdivision Map Act at the request of Jane Osmeier, March 24, 1967. I hereby certify that it conforms to the approved tentative map and the conditions of approval thereof; that all provisions of applicable state law and local ordinances have been complied with.

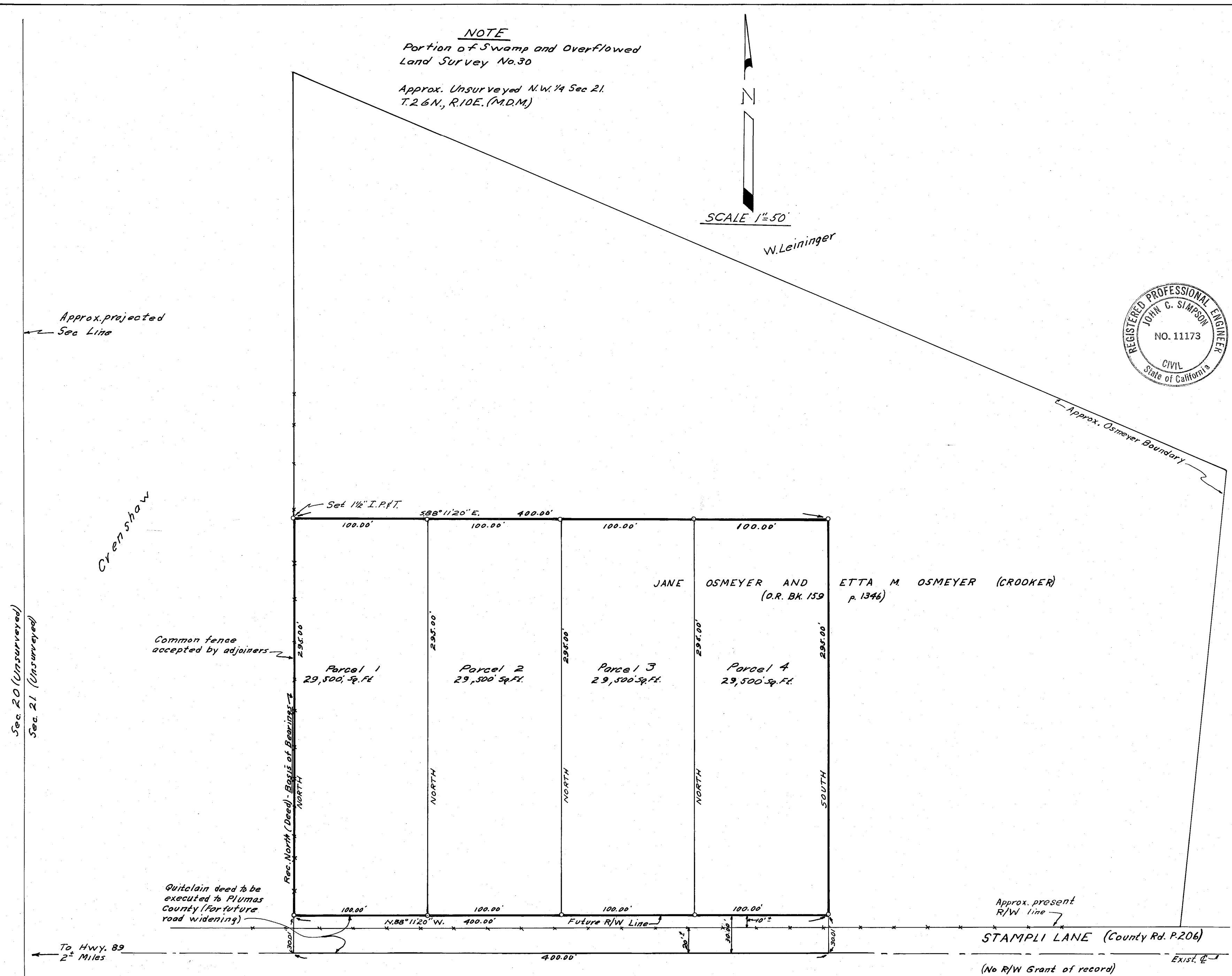
*John C. Simpson*  
 John C. Simpson  
 R.C.E. No. 11173

COUNTY SURVEYOR'S CERTIFICATE

This map has been examined this 4<sup>TH</sup> day of APRIL 1967, for conformance with the requirements of Section 11575 of the Subdivision Map Act.

*Laurence J. Brock*  
 RCE 13,528

**PARCEL MAP**  
 OF  
 SUBDIVISION OF FOUR PARCELS  
 FOR  
 JANE OSMEYER AND ETTA M. OSMEYER (CROOKER)  
 TAYLORSVILLE-PLUMAS COUNTY-CALIFORNIA



RECORDER'S CERTIFICATE

Filed for record this 5th day of April, 1967, at 9:11 A.M.  
 in Book 1 of Parcel Maps at Page 47 at the request of John C. Simpson.

Fee \$5.00  
 File No.

*Ida Hegan Gronvold*  
 Ida Hegan Gronvold  
 Plumas County Recorder

JOHN C. SIMPSON P.E.  
 CIVIL ENGINEER  
 QUINCY, CALIFORNIA

1pm 67