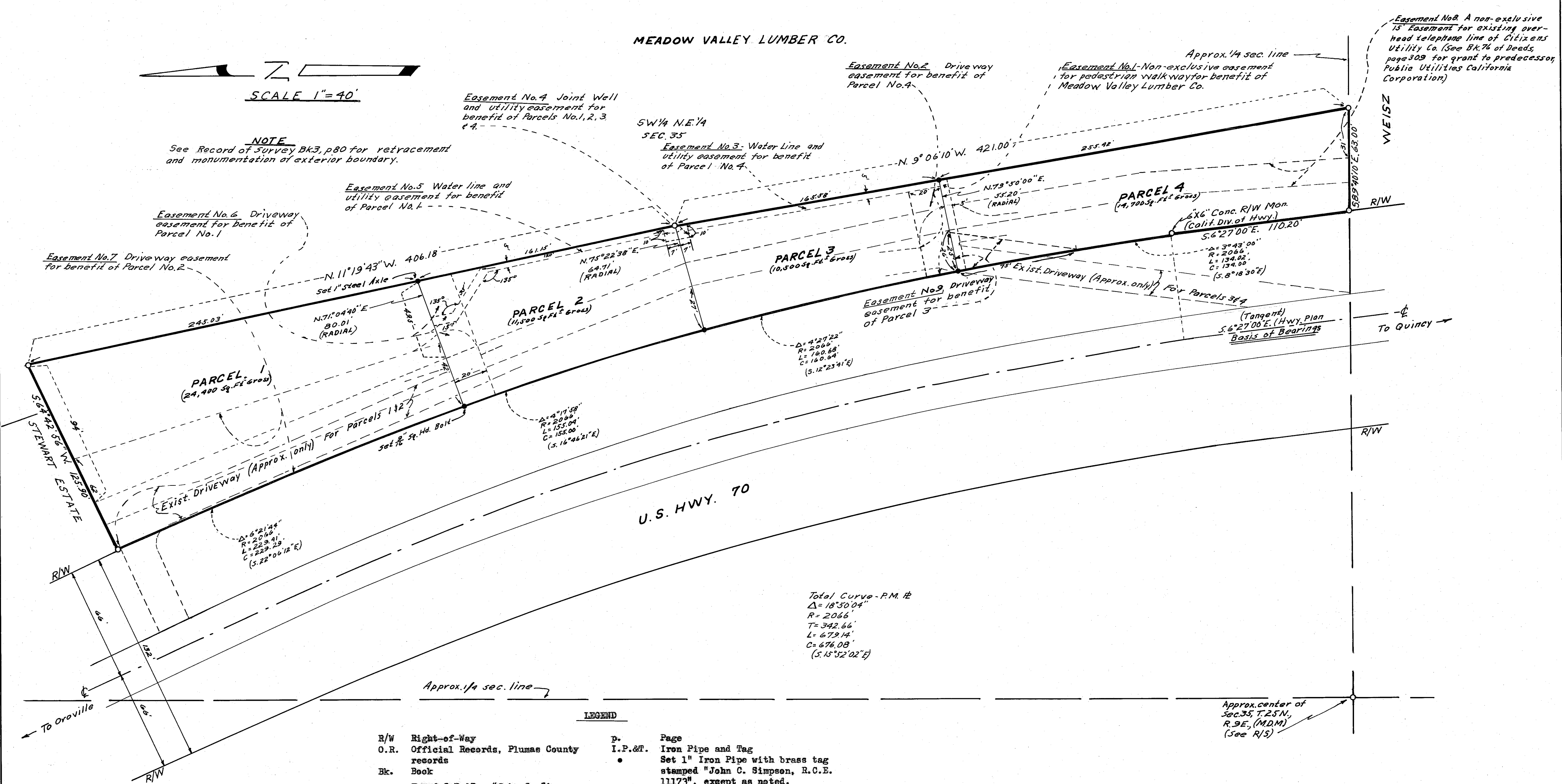


MEADOW VALLEY LUMBER CO.

SCALE 1" = 40'

NOTE
See Record of Survey Bk 3, p 80 for retracement and monumentation of exterior boundary.

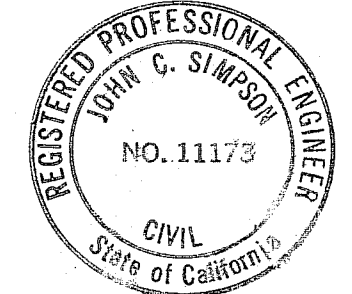


R/W Right-of-Way
O.R. Official Records, Plumas County records
Bk. Book
o Found I.P.&T., "John C. Simpson, R.C.E. 11173", except as noted, (See R/S, Bk. 3, p. 80, Plumas County records)

LEGEND
P- Page
I.P.&T. Iron Pipe and Tag
• Set 1" Iron Pipe with brass tag stamped "John C. Simpson, R.C.E. 11173", except as noted.
R/S Record of Survey

COUNTY SURVEYOR'S CERTIFICATE
This map has been examined this 17th day of April, 1967, for conformance with the requirements of Section 11575 of the Subdivision Map Act.
Laurence J. Brock
Laurence J. Brock
County Surveyor

SURVEYOR'S CERTIFICATE
This map was prepared by me or under my direction (and is based upon a field survey) in conformance with the requirements of the Subdivision Map Act at the request of John C. Simpson, March 1, 1967. I hereby certify that it conforms to the approved tentative map and the conditions of approval thereof; that all provisions of applicable state law and local ordinances have been complied with.
John C. Simpson
John C. Simpson
R.C.E. No. 11173



PARCEL MAP
OF
SUBDIVISION INTO FOUR PARCELS
OF A PARCEL WITHIN SW 1/4, NE 1/4, SEC. 35, T. 25N., R. 9E. (M.D.M.)
PLUMAS COUNTY CALIFORNIA
OWNERS JOHN C. AND EMILY M. SIMPSON
MARCH 1967

RECORDER'S CERTIFICATE
Filed for record this 17th day of April, 1967, at 8:53 AM, in Book 1 of Parcel Maps at Page 76 at the request of John C. Simpson.
Ida Hogan Gronvold
Ida Hogan Gronvold
Plumas County Recorder
Debra...
Debra... Deputy

Fee 5.00
File No. 3565

JOHN C. SIMPSON P.E.
CIVIL ENGINEER
QUINCY CALIFORNIA