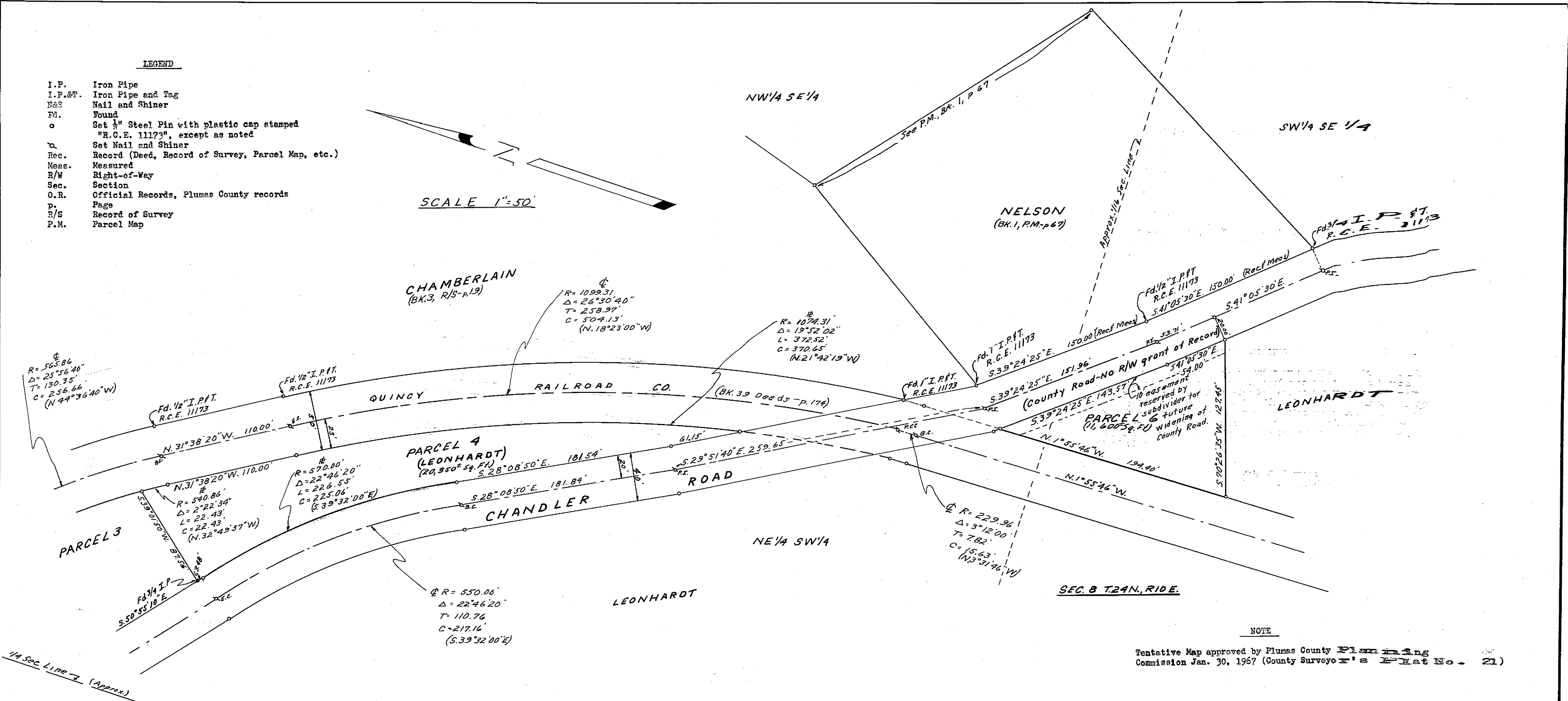


LEGEND

- I.P. Iron Pipe
- I.P.&T. Iron Pipe and Tag
- N&S Nail and Shiner
- FO. Found
- o Set 1/4" Steel Pin with plastic cap stamped "R.C.E. 11173", except as noted
- α Set Nail and Shiner
- Rec. Record (Deed, Record of Survey, Parcel Map, etc.)
- Meas. Measured
- R/W Right-of-Way
- Sec. Section
- O.R. Official Records, Plumas County records
- p. Page
- R/S Record of Survey
- P.M. Parcel Map

SCALE 1"=50'



NOTE  
 Tentative Map approved by Plumas County Planning Commission Jan. 30, 1967 (County Surveyor's Plat No. 21)

RECORDER'S CERTIFICATE

Filed for record this 14<sup>th</sup> day of July, 1967, at 10:26 A.M. in Book 1 of Parcel Maps at Page 41 at the request of John C. Simpson.  
 Ida Hogan Gronvold  
 Plumas County Recorder

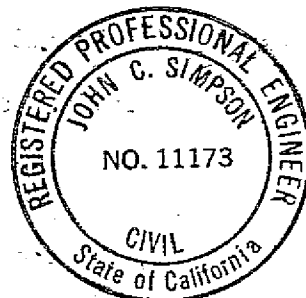
COUNTY SURVEYOR'S CERTIFICATE

This map has been examined this 14<sup>th</sup> day of July, 1967, for conformance with the requirements of Section 11575 of the Subdivision Map Act.  
 Lawrence J. Brock  
 Plumas County Surveyor  
 R.C.E. No. 13528

SURVEYOR'S CERTIFICATE

This map was prepared by me or under my direction (and is based upon a field survey) in conformance with the requirements of the Subdivision Map Act at the request of Ernest G. Leonhardt, June 26, 1967. I hereby certify that it conforms to the approved tentative map and the conditions of approval thereof; that all provisions of applicable state law and local ordinances have been complied with.

John C. Simpson  
 John C. Simpson  
 R.C.E. No. 11173



JOHN C. SIMPSON P.E.  
 CIVIL ENGINEER  
 QUINCY CALIFORNIA

PARCEL MAP  
 OF  
 THREE NEW PARCELS  
 AND  
 THE RETRACEMENT AND MODIFICATION OF  
 THREE EXISTING PARCELS  
 PRINCIPAL OWNER-ERNEST G. LEONHARDT  
 SECONDARY OWNERS  
 LEONARDE E. & ADELINE J. BELTZ - JACK M. & BARBARA C. BUCKHOUSE  
 PLUMAS COUNTY, CALIFORNIA

Fee \$7.00  
 File No. 137