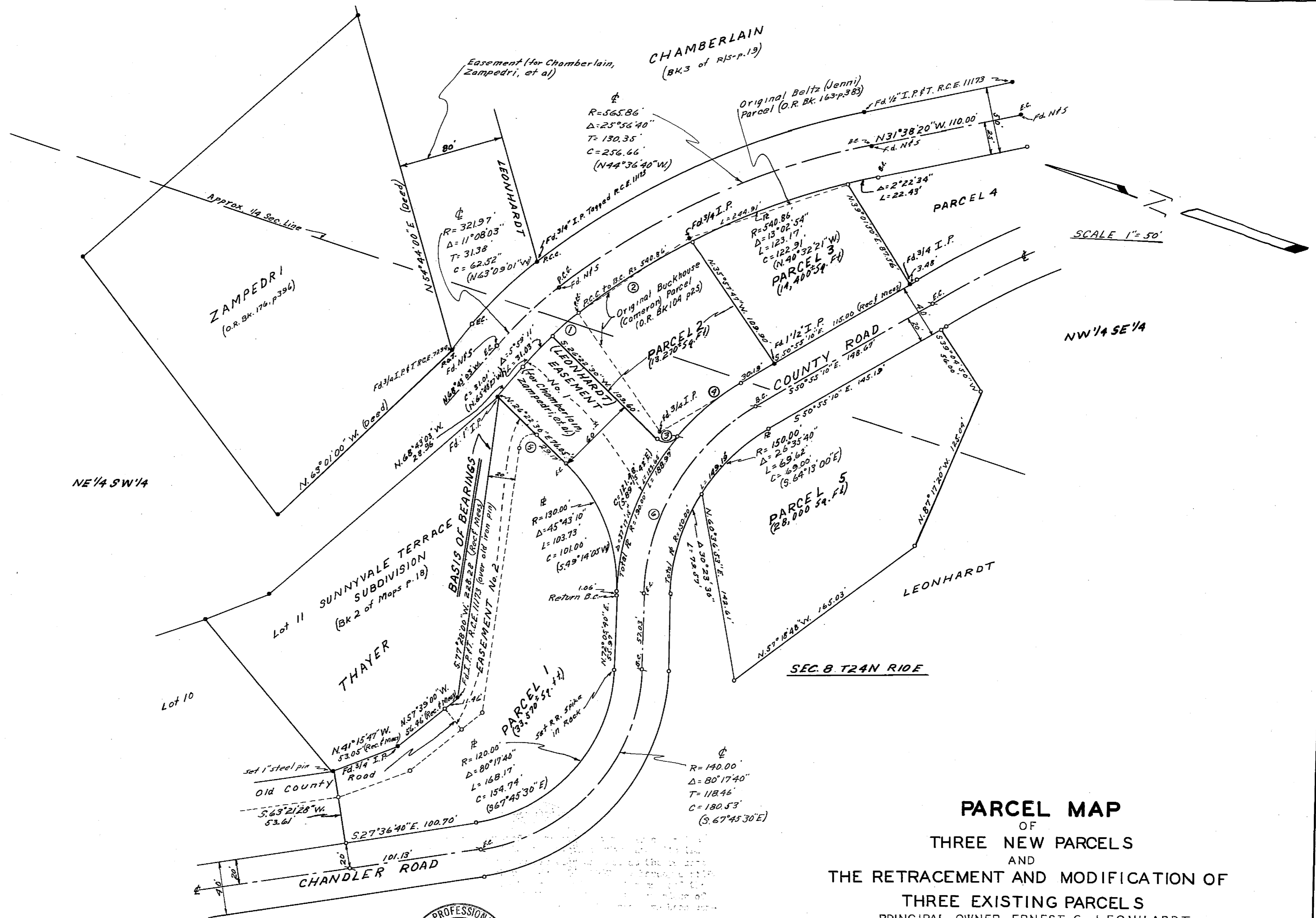


**ADDITIONAL
CURVE DATA**

- ① R=296.97'
Δ=5°08'52"
L=26.68'
C=26.70'
(N60°09'26"W)
- ② R=540.86'
Δ=10°31'12"
L=99.30'
C=99.17'
(N52°19'29"W)
- ③ R=10.00'
Δ=96°59'35"
L=16.90'
C=14.98'
S22°07'18"E
- ④ R=130.00'
Δ=19°41'55"
L=65.32'
C=65.00'
S.60°46'08"E
- ⑤ R=10.00'
Δ=128°54'30"
L=22.50'
C=18.04'
- ⑥ R=170.00'
Δ=56°59'10"
L=92.28'
C=162.20'
(S.79°24'25"E)



PARCEL MAP
OF
THREE NEW PARCELS
AND
THE RETRACEMENT AND MODIFICATION OF
THREE EXISTING PARCELS
PRINCIPAL OWNER-ERNEST G. LEONHARDT
SECONDARY OWNERS
LEONARDE & ADELINE J. BELTZ— JACK M. & BARBARA C. BUCKHOUSE
PLUMAS COUNTY, CALIFORNIA



JOHN C. SIMPSON P.E.
CIVIL ENGINEER
QUINCY CALIFORNIA

1/17/82