

THIS MAP WAS PREPARED BY ME OR UNDER MY DIRECTION (AND IS BASED ON EXISTING RECORDS) IN CONFORMANCE WITH THE REQUIREMENTS OF THE SUBDIVISION MAP ACT AT THE REQUEST OF CAL-SIERRA TITLE CO., JULY, 1967. I HEREBY CERTIFY THAT IT CONFORMS TO THE APPROVED TENTATIVE MAP AND THE CONDITIONS OF APPROVAL THERE OF; THAT ALL PROVISIONS OF APPLICABLE STATE LAW AND LOCAL ORDINANCES HAVE BEEN COMPLIED WITH.

# COUNTY SURVEYOR'S CERTIFICATE

THIS MAP HAS BEEN EXAMINED THIS 7<sup>TH</sup> DAY OF August 1967 FOR CONFORMANCE WITH THE REQUIREMENTS OF SECT. 11575 OF THE SUBDIVISION MAP ACT.

#483

# RECORDER'S CERTIFICATE

FILED FOR RECORD THIS 8<sup>th</sup> DAY OF August 1967 AT 8:42 A.M. IN BOOK 1  
OF PARCEL MAPS AT PAGE 85 AT THE REQUEST OF CAL-SIERRA TITLE CO.

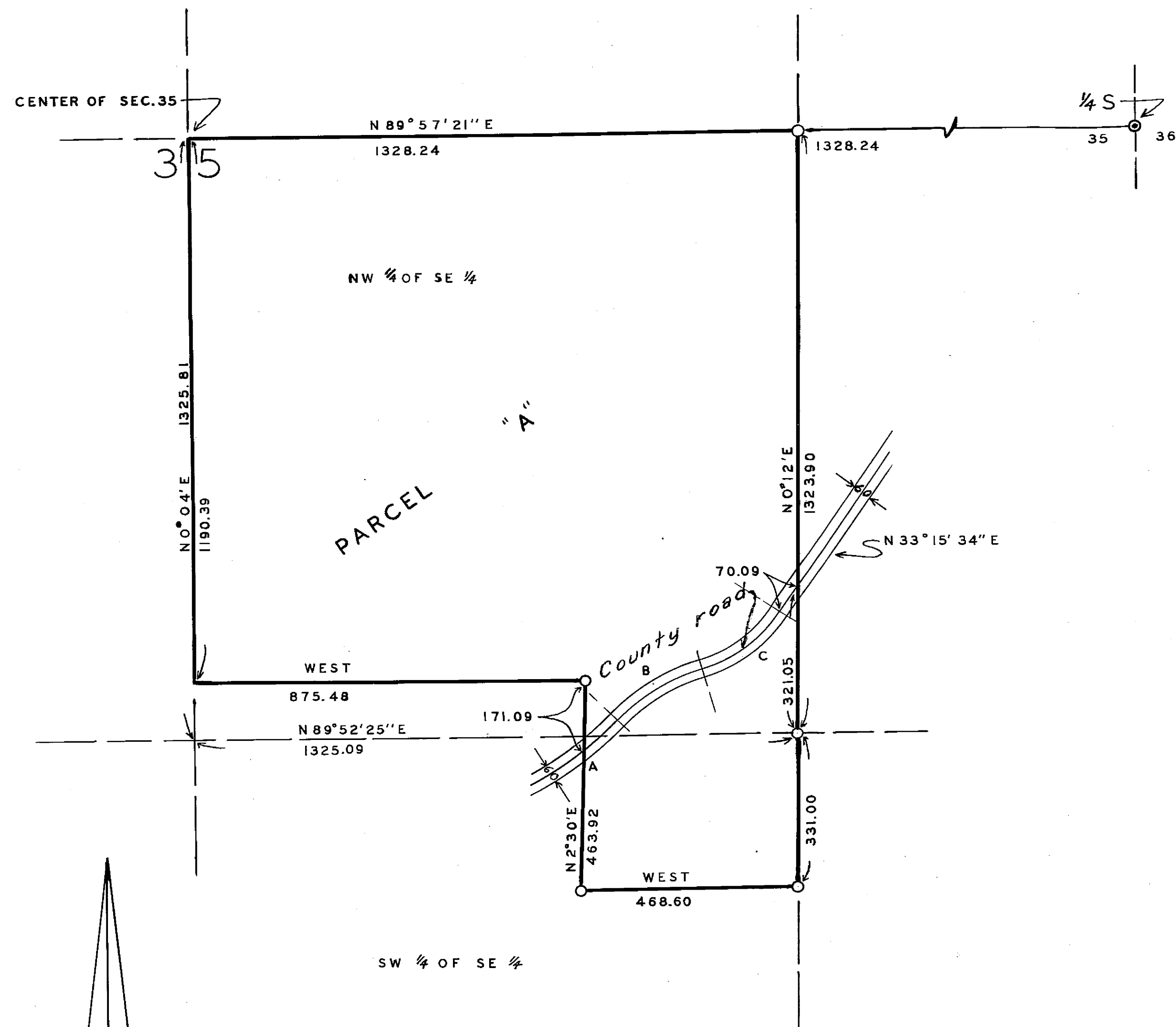
*Ida Hogan Gronvold*  
IDA HOGAN GRONVOLD  
PLUMAS COUNTY RECORDER

LEGEND:

- © 1½" IRON PIPE  
○ 1" IRON PIPE

CURVE DATA

Q	R	$\Delta$	T	L
A	765.13	7°35'30"	50.76	101.38
B	418.31	29°14'44"	109.14	213.52
C	300.13	39°58'	109.14	209.36



# PARCEL MAP

A PORTION OF THE W. 1/2 OF THE S.E. 1/4 OF  
SEC. 35. T 27 N R 9 E M.D.M.  
PREPARED FROM INFORMATION AS SHOWN ON RECORD OF  
SURVEY FILE IN BOOK 2 OF RECORD OF SURVEYS AT PAGE 35  
Scale: 1"=200'