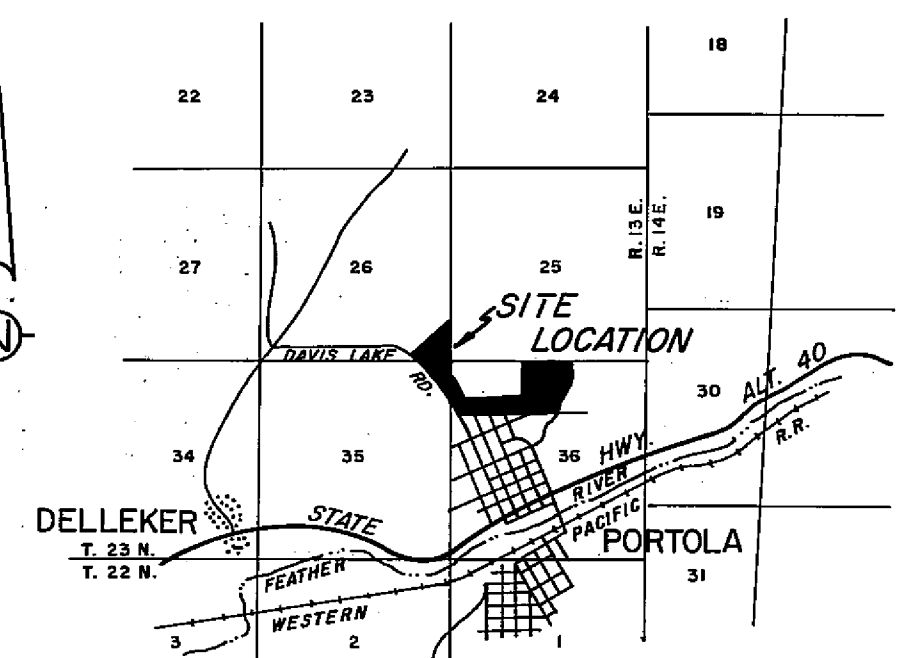
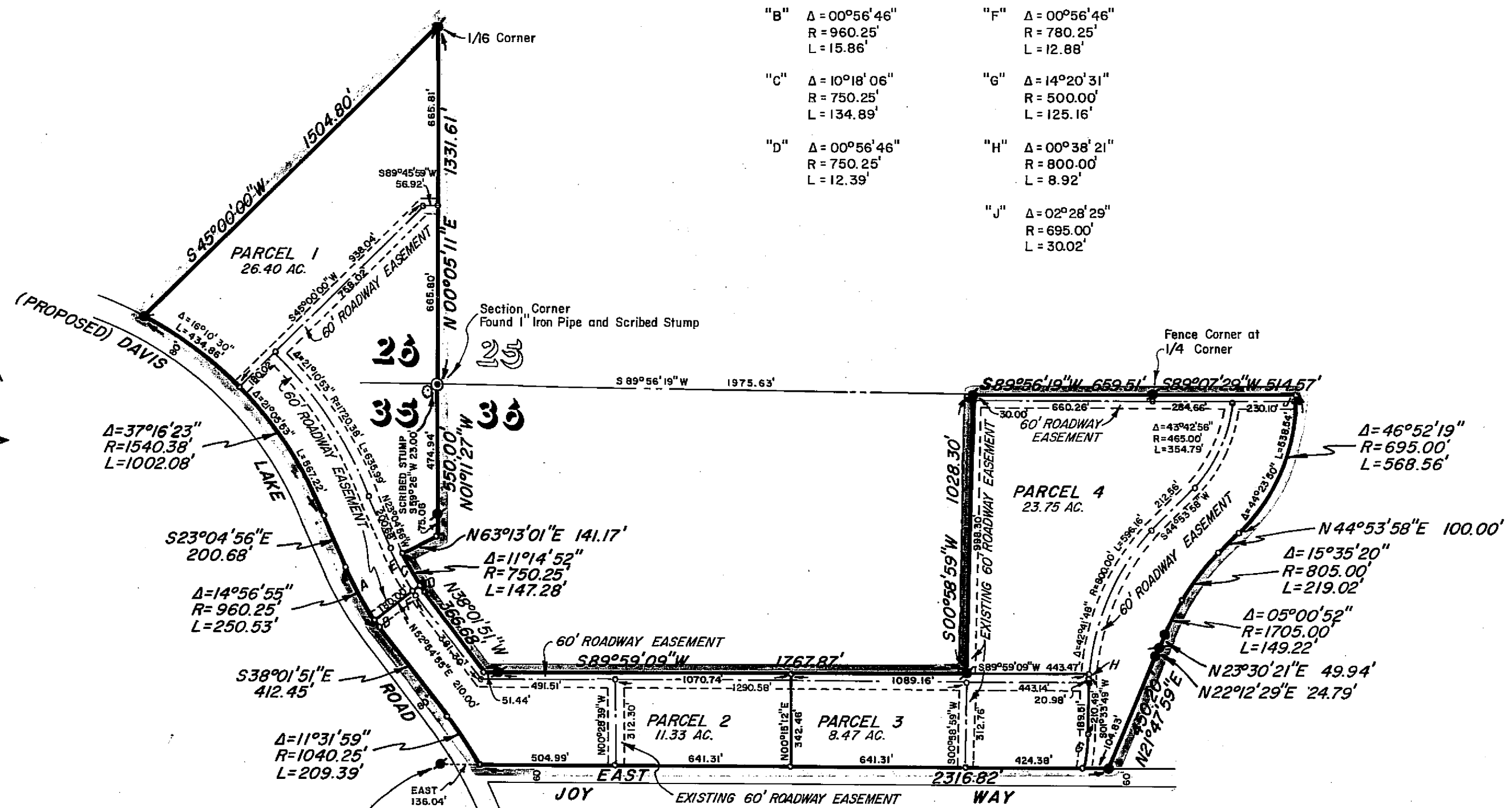
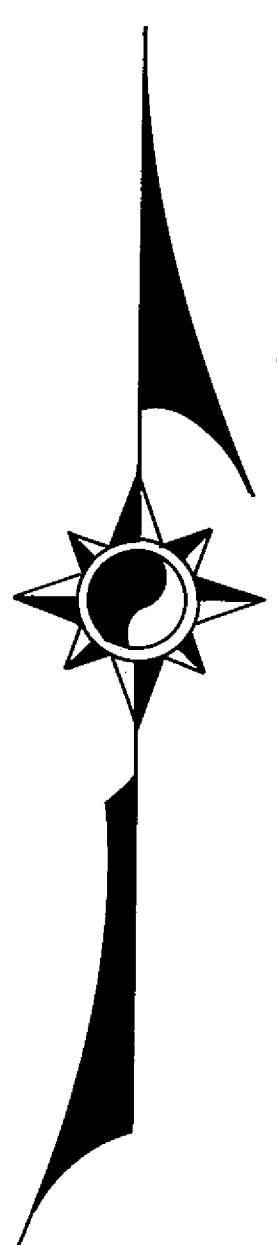


CURVE DATA

"A"	Δ = 14°00'09" R = 960.25' L = 234.68'	"E"	Δ = 14°00'09" R = 780.25' L = 190.69'
"B"	Δ = 00°56'46" R = 960.25' L = 15.86'	"F"	Δ = 00°56'46" R = 780.25' L = 12.88'
"C"	Δ = 10°18'06" R = 750.25' L = 134.89'	"G"	Δ = 14°20'31" R = 500.00' L = 125.16'
"D"	Δ = 00°56'46" R = 750.25' L = 12.39'	"H"	Δ = 00°38'21" R = 800.00' L = 8.92'
		"J"	Δ = 02°28'29" R = 695.00' L = 30.02'



LOCATION MAP
SCALE: 1" = 1 Mile

LEGEND

- FOUND 3/4" IRON PIPE MARKED RCE 7294
- FOUND BOLT
- COMPUTED CORNER LOCATION

NOTES

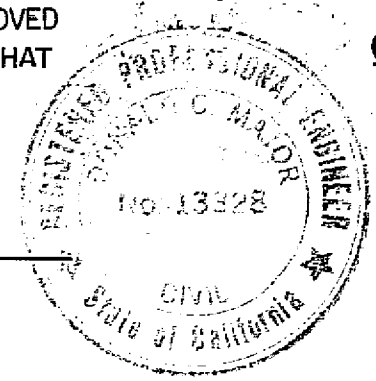
THE BASIS OF BEARING IS THE WEST LINE OF THE S.W. 1/4 OF SECTION 25, T.23N., R.13E., M.D.B.&M., GIVEN AS N00°05'11"E ON THAT CERTAIN RECORD OF SURVEY MAP FILED MAY 31, 1967, IN BOOK 3 OF RECORD OF SURVEYS AT PAGE 88, RECORDING NO. 3890, IN THE OFFICIAL RECORDS OF THE COUNTY OF PLUMAS, STATE OF CALIFORNIA.

TOTAL ACREAGE 69.95 AC.

SURVEYOR'S CERTIFICATE

THIS MAP WAS PREPARED BY ME OR UNDER MY DIRECTION AND WAS COMPILED FROM RECORD DATA IN CONFORMANCE WITH THE REQUIREMENTS OF THE SUBDIVISION MAP ACT AT THE REQUEST OF ALBION J. JOY IN JULY, 1967. I HEREBY CERTIFY THAT IT CONFORMS TO THE APPROVED TENTATIVE MAP AND THE CONDITIONS OF APPROVAL THEREOF, AND THAT ALL PROVISIONS OF APPLICABLE STATE LAW AND LOCAL ORDINANCES HAVE BEEN COMPLIED WITH.

Donald C. Major
DONALD C. MAJOR R.C.E. 13328



RECORDER'S CERTIFICATE

FILED FOR RECORD THIS 28th DAY OF September, 1967, AT 1:30 P.M. IN BOOK 1 OF PARCEL MAPS AT PAGE 93 AT THE REQUEST OF WALTER B. GRIMES. RECORDING NO. 1605

FEE 5.00

Ida Wagan Grunwald
COUNTY RECORDER

BY *A. Schaefer*
DEPUTY

COUNTY ENGINEER'S CERTIFICATE

THIS MAP HAS BEEN EXAMINED FOR CONFORMANCE WITH THE REQUIREMENTS OF SECTION 11575 OF THE SUBDIVISION MAP ACT THIS 27th DAY OF Sept, 1967.

Lawrence J. Brock
LAWRENCE J. BROCK, R.C.E. 13528

PARCEL MAP
A PORTION OF SECTIONS 26, 35, & 36,
T.23N., R.13E., M.D.B. & M.
PLUMAS COUNTY, CALIFORNIA

MAP OF THE LANDS OF
ALBION J. JOY
SCALE: 1" = 400' JULY, 1967

WALTER B. GRIMES ASSOC.
CIVIL ENGINEERS & LAND SURVEYORS
1356 MANGROVE AVENUE, CHICO, CALIFORNIA