

RECORD OF SURVEY

GRIZZLY CREEK RANCH
SIERRA NEVADA JOURNEYS CAMP PARCELS
IN SECTIONS 17, 20, 21, 28 & 29, T 23 N, R 14 E M.D.M.
PLUMAS COUNTY, CALIFORNIA

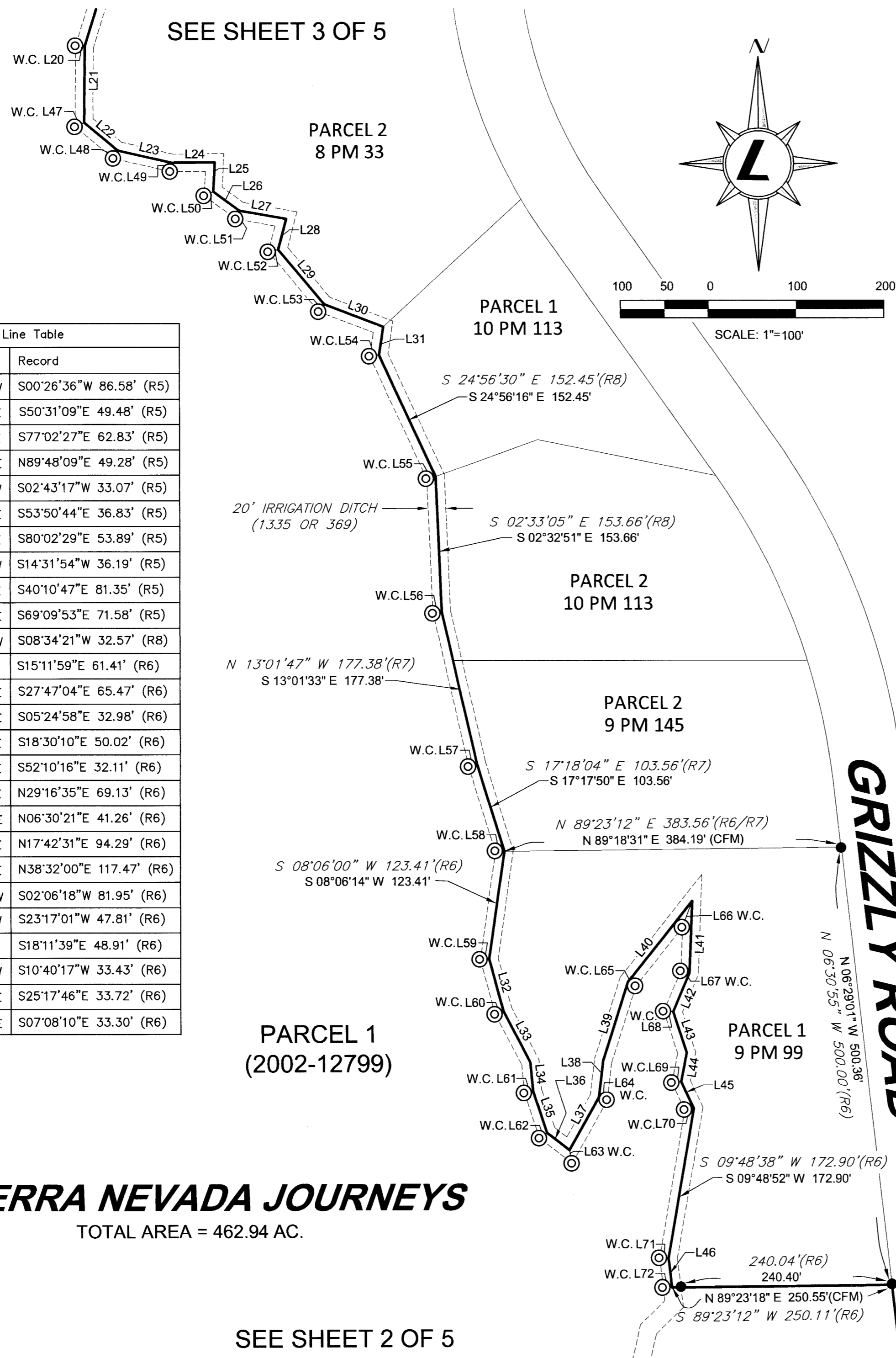
Sheet 4 of 5

SEE SHEET 2 OF 5

Line #	Length	Direction	Record
L21	86.58'	S00°26'50"W	S00°26'36"W 86.58' (R5)
L22	49.48'	S50°30'55"E	S50°31'09"E 49.48' (R5)
L23	62.83'	S77°02'13"E	S77°02'27"E 62.83' (R5)
L24	49.28'	N89°48'23"E	N89°48'09"E 49.28' (R5)
L25	33.07'	S02°43'31"W	S02°43'17"W 33.07' (R5)
L26	36.83'	S53°50'30"E	S53°50'44"E 36.83' (R5)
L27	53.89'	S80°02'15"E	S80°02'29"E 53.89' (R5)
L28	36.19'	S14°32'08"W	S14°31'54"W 36.19' (R5)
L29	81.35'	S40°10'33"E	S40°10'47"E 81.35' (R5)
L30	71.58'	S69°09'39"E	S69°09'53"E 71.58' (R5)
L31	32.57'	S08°34'35"W	S08°34'21"W 32.57' (R8)
L32	61.41'	S15°11'45"E	S15°11'59"E 61.41' (R6)
L33	65.47'	S27°46'50"E	S27°47'04"E 65.47' (R6)
L34	32.98'	S05°24'44"E	S05°24'58"E 32.98' (R6)
L35	50.02'	S18°29'56"E	S18°30'10"E 50.02' (R6)
L36	32.11'	S52°10'02"E	S52°10'16"E 32.11' (R6)
L37	69.13'	N29°16'49"E	N29°16'35"E 69.13' (R6)
L38	41.26'	N06°30'35"E	N06°30'21"E 41.26' (R6)
L39	94.29'	N17°42'45"E	N17°42'31"E 94.29' (R6)
L40	117.47'	N38°32'14"E	N38°32'00"E 117.47' (R6)
L41	81.95'	S02°06'32"W	S02°06'18"W 81.95' (R6)
L42	47.81'	S23°17'15"W	S23°17'01"W 47.81' (R6)
L43	48.91'	S18°11'25"E	S18°11'39"E 48.91' (R6)
L44	33.43'	S10°40'31"W	S10°40'17"W 33.43' (R6)
L45	33.72'	S25°17'32"E	S25°17'46"E 33.72' (R6)
L46	33.14'	S07°07'56"E	S07°08'10"E 33.30' (R6)

SIERRA NEVADA JOURNEYS
TOTAL AREA = 462.94 AC.

SEE SHEET 2 OF 5



Line #	Length	Direction
L20	10.24'	N81°00'04"W
L47	11.18'	S65°03'14"W
L48	10.27'	S26°38'28"W
L49	10.14'	S06°29'58"W
L50	11.38'	S64°31'41"W
L51	10.28'	S22°55'24"W
L52	11.18'	S77°15'44"W
L53	10.26'	S35°24'36"W
L54	10.43'	S81°36'53"W
L55	10.21'	S76°20'53"W
L56	10.09'	S81°54'01"W
L57	10.00'	S75°04'06"W
L58	10.05'	N87°42'25"W
L59	10.19'	S86°03'09"W
L60	10.04'	S68°04'18"W
L61	10.10'	S77°30'08"W
L62	10.52'	S54°14'53"W
L63	15.27'	S11°21'07"E
L64	10.19'	S72°19'07"E
L65	10.15'	S61°23'46"E
L66	32.03'	S20°26'37"W
L67	10.34'	N78°22'51"W
L68	10.57'	N87°21'02"W
L69	10.40'	S82°58'20"W
L70	10.40'	S81°44'41"W
L71	10.20'	N88°31'58"W
L72	10.01'	N89°55'21"W

NOTES

1. ALL DIMENSIONS ARE HORIZONTAL GROUND DISTANCES, AS MEASURED IN THE FIELD, UNLESS OTHERWISE INDICATED.

REFERENCE DOCUMENTS

- (R1) LOT LINE ADJUSTMENT, RECORDED JULY 12, 2005, AT DOCUMENT NO. 2005-0007077, OFFICIAL RECORDS OF PLUMAS COUNTY.
- (R2) GRANT DEED, RECORDED DECEMBER 19, 2002, AT DOCUMENT NO. 2002-0012799, OFFICIAL RECORDS OF PLUMAS COUNTY.
- (R3) PARCEL MAP, RECORDED JANUARY 19, 1979, IN BOOK 6 OF PARCEL MAPS, AT PAGE 116, OFFICIAL RECORDS OF PLUMAS COUNTY.
- (R4) PARCEL MAP, RECORDED NOVEMBER 6, 1980, IN BOOK 7 OF PARCEL MAPS, AT PAGE 107, OFFICIAL RECORDS OF PLUMAS COUNTY.
- (R5) PARCEL MAP, RECORDED AUGUST 28, 1981, IN BOOK 8 OF PARCEL MAPS, AT PAGE 33, OFFICIAL RECORDS OF PLUMAS COUNTY.
- (R6) PARCEL MAP, RECORDED JANUARY 12, 1988, IN BOOK 9 OF PARCEL MAPS, AT PAGE 99, OFFICIAL RECORDS OF PLUMAS COUNTY.
- (R7) PARCEL MAP, RECORDED SEPTEMBER 29, 1989, IN BOOK 9 OF PARCEL MAPS, AT PAGE 145, OFFICIAL RECORDS OF PLUMAS COUNTY.
- (R8) PARCEL MAP, RECORDED APRIL 13, 1994, IN BOOK 10 OF PARCEL MAPS, AT PAGE 113, OFFICIAL RECORDS OF PLUMAS COUNTY.

LEGEND

- FOUND REBAR W/ ALUMINUM CAP, PLS 2843 (HAMBY)
- ⊙ FOUND T-POST W/ TAG, PLS 5369 (GRIST), OR AS NOTED
- ⊙ FOUND SURVEY MONUMENT, AS NOTED
- ⊙ SET 5/8" REBAR W/ PLASTIC OR ALUMINUM CAP, PLS 9129
- (R1) RECORD COURSE AND DISTANCE PER REFERENCED DOCUMENT
- (CFM) CALCULATED FROM MEASURED DIMENSIONS
- P.O.B. POINT OF BEGINNING
- W.C. WITNESS CORNER



225 KINGSBURY GRADE, SUITE A
PO BOX 3570, STATELINE, NV 89449
TEL (775) 588-6490
LUMOSINC.COM

16 RS 83