

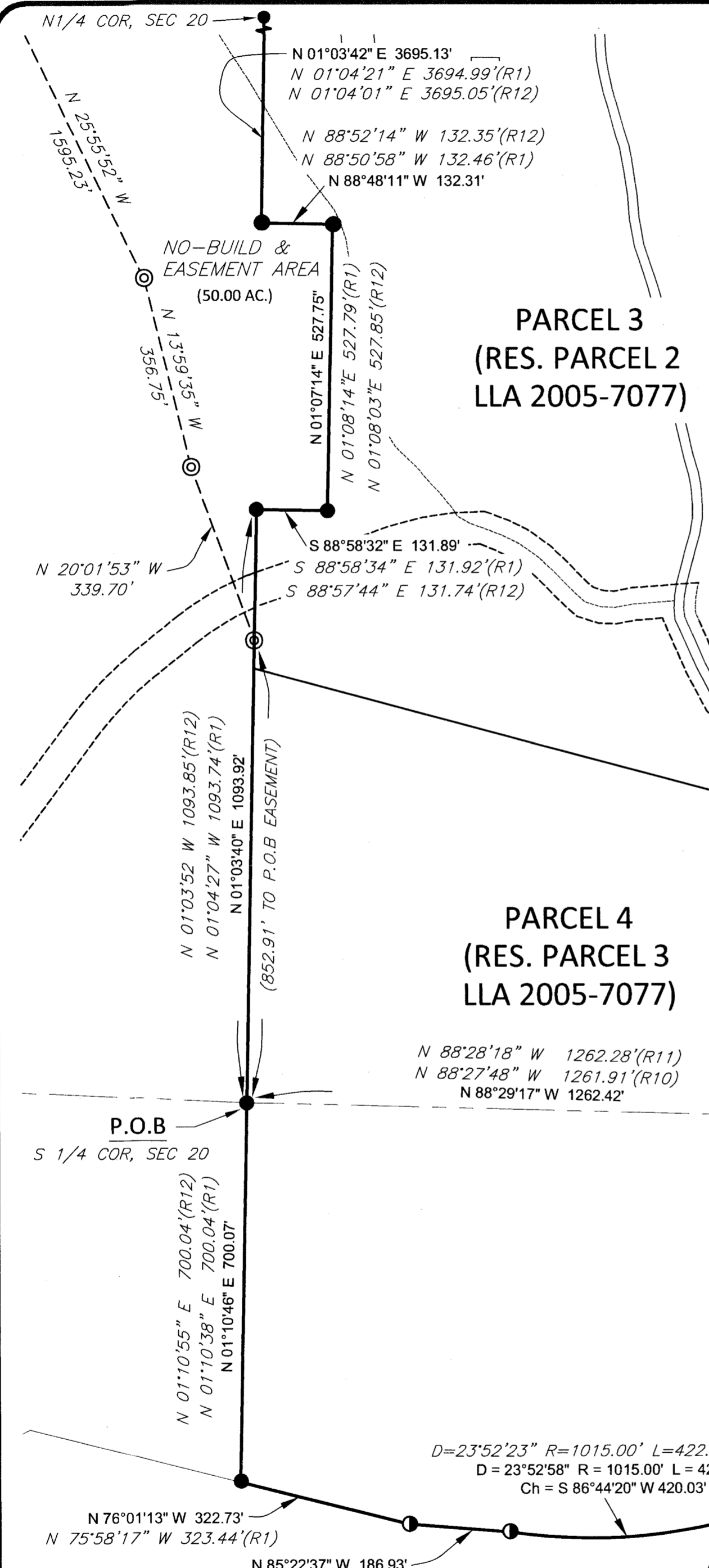
# RECORD OF SURVEY

SIERRA NEVADA JOURNEYS CAMP PARCELS  
IN SECTIONS 17, 20, 21, 28 & 29, T 23 N, R 14 E M.D.M.  
PLUMAS COUNTY, CALIFORNIA

Sheet 2 of 5

SEE SHEET 1 OF 5

Line #	Length	Direction	Record
L73	36.25'	S57°57'25"W	S58°05'45"W 36.10'(R9)
L74	40.00'	S28°01'20"W	S28°09'40"W 40.00'(R9)
L75	307.46'	N87°22'49"W	N87°14'29"W 307.46'(R9)
L76	40.00'	S02°37'11"W	S02°45'31"W 40.00'(R9)
L77	40.09'	N87°14'29"W	N87°14'29"W 40.09'(R9)
L78	199.97'	S63°07'56"W	S63°07'30"W 199.81'(R9)
L79	82.18'	N70°46'48"W	N70°24'23"W 82.76'(R9)
L80	400.00'	S63°07'56"W	S63°07'30"W 400.00'(R9)
L81	102.00'	N26°52'04"W	N26°52'30"W 102.00'(R9)
L82	39.49'	S82°29'32"W	S82°29'06"W 39.22'(R9)
L83	192.79'	S07°52'18"E	S07°52'44"E 193.54'(R9)
L84	32.00'	S26°52'04"E	S26°52'30"E 32.00'(R9)
L85	150.00'	S63°07'56"W	S63°07'30"W 150.00'(R9)
L86	154.84'	S77°31'11"W	S78°03'22"W 155.24'(R9)
L87	155.75'	S63°35'05"W	S63°07'30"W 155.50'(R9)
			S63°07'30"W 151.13'(R1)
L88	226.69'	S88°10'06"W	S88°10'37"W 226.70'(R9)
			S88°10'37"W 226.70'(R1)

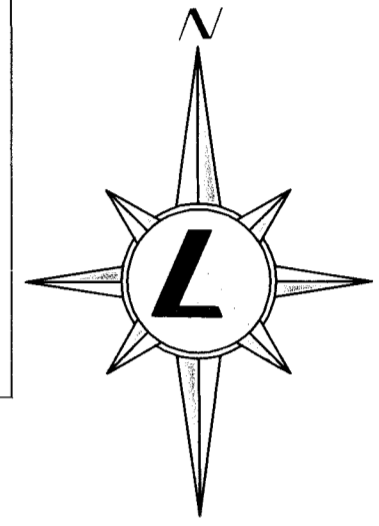


## SIERRA NEVADA JOURNEYS

TOTAL AREA = 462.94 AC.

PARCEL 1  
(2002-12799)

SEE SHEET 4 OF 5  
FOR DETAIL



FEATHER RIVER HWY - CA 70

### REFERENCE DOCUMENTS

- (R1) LOT LINE ADJUSTMENT, RECORDED JULY 12, 2005, AT DOCUMENT NO. 2005-0007077 OFFICIAL RECORDS OF PLUMAS COUNTY.
- (R2) - (R8) SEE SHEETS 3 OR 4
- (R9) R-W RECORD MAP, PLU-70, MAP NO. 046412, DATED FEBRUARY 1966, CALIFORNIA DIVISION OF HIGHWAYS.
- (R10) RECORD OF SURVEY, RECORDED AUGUST 30, 1982, IN BOOK 6 OF RECORD OF SURVEYS, AT PAGE 66, OFFICIAL RECORDS OF PLUMAS COUNTY.
- (R11) RECORD OF SURVEY, RECORDED OCTOBER 7, 1999, IN BOOK 11 OF RECORD OF SURVEYS, AT PAGE 84, OFFICIAL RECORDS OF PLUMAS COUNTY.
- (R12) RECORD OF SURVEY, RECORDED JANUARY 15, 2003, IN BOOK 12 OF RECORD OF SURVEYS, AT PAGE 100, OFFICIAL RECORDS OF PLUMAS COUNTY.

### NOTES

1. ALL DIMENSIONS ARE HORIZONTAL GROUND DISTANCES, AS MEASURED IN THE FIELD, UNLESS OTHERWISE INDICATED.
2. PARCEL 5 IS NOT A PART OF THIS SURVEY. IT IS SHOWN FOR REFERENCE PURPOSES ONLY AS PART OF THE DEED CONVEYANCE AT DOCUMENT NO. 2020-0004304.

### LEGEND

- FOUND REBAR W/ ALUMINUM CAP, PLS 2843 (HAMBY)
- ⊙ FOUND T-POST W/ TAG, PLS 5369 (GRIST), OR AS NOTED
- ⊙ FOUND SURVEY MONUMENT, AS NOTED
- ⊙ SET 5/8\" REBAR W/ PLASTIC OR ALUMINUM CAP, PLS 9129
- (R1) RECORD COURSE AND DISTANCE PER REFERENCED DOCUMENT
- (CFM) CALCULATED FROM MEASURED DIMENSIONS
- P.O.B. POINT OF BEGINNING
- W.C. WITNESS CORNER



225 KINGSBURY GRADE, SUITE A  
PO BOX 3570, STATELINE, NV 89449  
TEL (775) 588-6490  
LUMOSINC.COM

16 RS 81