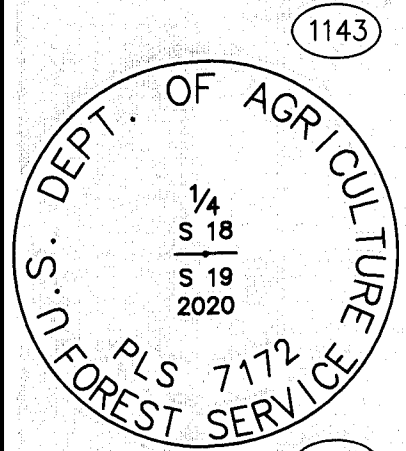
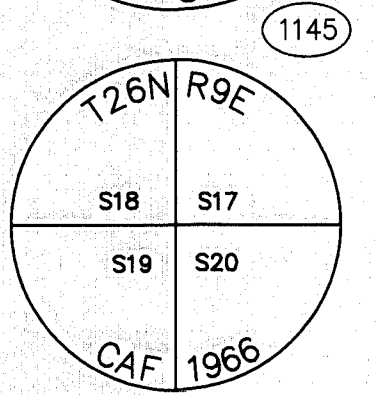


MONUMENT DESCRIPTIONS



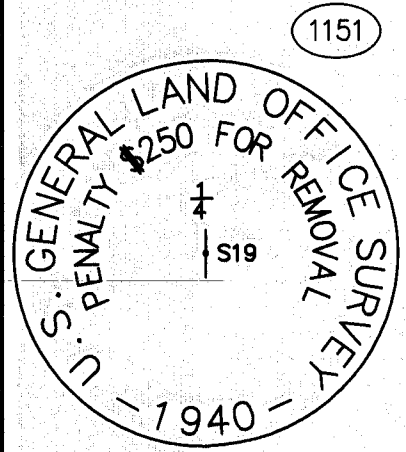
FOUND 3/4" IRON PIPE, NO CAP, NO REFERENCE, ACCEPTED AS 1/4 CORNER BETWEEN SECTION 18 AND 19, TOWNSHIP 26 NORTH, RANGE 9 EAST, MOUNT DIABLO MERIDIAN. RE-SET 2 1/4" ALUMINUM PIPE WITH 3 1/4" ALUMINUM CAP "DIG-IN" MONUMENT STAMPED AS SHOWN. BUILT 26" WIDE BY 6" TALL ROCK MOUND, PAINTED ROCKS RED AND CLEARED A 6' RADIUS AROUND MONUMENT. SET POST 2 FEET SOUTHWESTERLY OF CORNER WITH FOREST SERVICE 54-9 MONUMENT SIGN. CORNER IS LOCATED IN SOUTHWESTERLY CUTBANK OF COW CREEK, APPROXIMATELY 60 FEET SOUTHWESTERLY OF DIRT ROAD. ESTABLISHED, BLAZED AND SCRIBED "1/4 S19 BT" AND RED RING PAINTED AROUND TREE. PUT FOREST SERVICE 54-9 MONUMENT SIGNS ON THE BACK OF TREES AND FOREST SERVICE 54-3 BEARING TREE SIGNS ON THE FRONT. SET MAG NAIL & WASHER FOR BEARING AND DISTANCE.

1143BT SE N64°41'E - 52.2' 24" WHITE FIR
1143BT SW N44°50'E - 56.0' 18" WHITE FIR



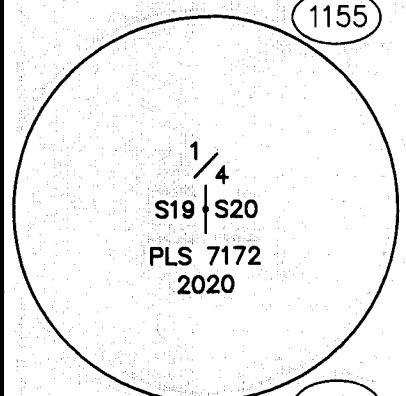
FOUND IRON ROD WITH 2 1/2" CAP, BENT, IN SMALL ROCK MOUND, STAMPED AS SHOWN PER 1972 CORNER CARD N-5. ACCEPTED MONUMENT AS SECTION CORNER COMMON TO SECTIONS 17, 18, 19 AND 20, TOWNSHIP 26 NORTH, RANGE 9 EAST, MOUNT DIABLO MERIDIAN. CORNER IS LOCATED ON SOUTHERLY SLOPE IN OPEN AREA IN MODERATELY DENSE FOREST OF PINE AND WHITE & DOUGLAS FIR. CORNER IS APPROXIMATELY 450 FEET NORTHWESTERLY OF DIRT ROAD. MONUMENT WAS REPLUMBED AND THE ROCK MOUND ADDED TO, TO BE 2 FEET IN DIAMETER AND 5 INCHES HIGH. SET POST WITH FOREST SERVICE 54-9 MONUMENT SIGN 2 FEET NORTHERLY OF MONUMENT, PAINTED ROCKS RED. FOUND EXISTING BEARING TREE WITH NO BLAZE OR SIGNS, AND SUGAR PINE STUMP WITH BLAZE BUT NO SIGNS. EXISTING BEARING TREE WAS PAINTED WITH RED RING, BLAZE ON STUMP WAS REPAINTED. A THIRD BEARING TREE WAS ESTABLISHED, BLAZED AND SCRIBED WITH "T26N R9E S19 BT" AND A RED RING PAINTED AROUND THE TREE. PUT FOREST SERVICE 54-9 SURVEY MONUMENT SIGNS ON THE BACK OF TREES AND FOREST SERVICE 54-3 BEARING TREE SIGNS ON THE FRONT. SET MAG NAIL & WASHERS FOR BEARING AND DISTANCE.

1145BT SE S80°32'E - 37.4' 20" SUGAR PINE STUMP
1145BT SW S3°18'W - 23.1' 16" PINE
1145BT SW2 S41°54'W - 32.3' 19" DOUGLAS FIR



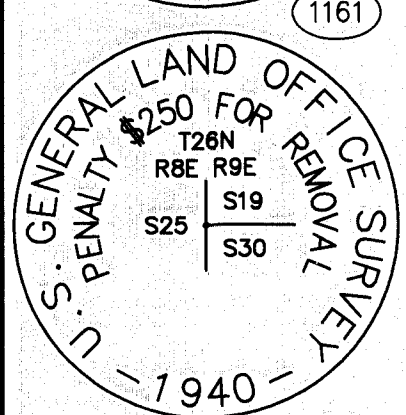
FOUND 3/4" IRON PIPE WITH 3" GLOBRASS CAP, UP 0.50' FEET IN ROCK MOUND, STAMPED AS SHOWN PER RECORD OF SURVEY 7 RS 94. ACCEPTED AS THE WEST QUARTER CORNER OF SECTION 19, TOWNSHIP 26 NORTH, RANGE 9 EAST, MOUNT DIABLO MERIDIAN. CORNER IS LOCATED ON GENTLE SOUTHWESTERLY FACING SLOPE WITH MODERATELY DENSE FIR AND PINE TREES AND MANZANITA. CORNER IS APPROXIMATELY 2,300 FEET WESTERLY OF RUSH CREEK. ROCK MOUND WAS REBUILT AND PAINTED RED. SET POST WITH FOREST SERVICE 54-2 BOUNDARY SIGN AND FOREST SERVICE 54-9 MONUMENT SIGN 2 FOOT SOUTHWESTERLY OF MONUMENT. ONE EXISTING BEARING TREE WAS FOUND WITH A BLAZE SCAR, ONE TREE WAS FOUND DEAD WITH NO VISIBLE SCAR, AND A STUMP WAS FOUND WITH NO VISIBLE BLAZES. NO SIGNAGE WAS FOUND. A NEW BEARING TREE WAS ESTABLISHED, BLAZED AND SCRIBED WITH "1/4 S19 BT" AND A RED RING PAINTED AROUND THE TREE. THE TWO EXISTING TREES WERE PAINTED WITH A RED RING, THE STUMP WAS LEFT UNTOUCHED. ALL TREES RECEIVED FOREST SERVICE 54-9 SURVEY MONUMENT SIGNS, AND MAG NAIL & WASHERS FOR BEARING AND DISTANCE.

1151BT NW N29°01'W - 31.4' 20" WHITE FIR
1151BT NW2 N08°31'W - 16.3' 11" SUGAR PINE
1151BT SE S80°02'E - 14.8' 24" WHITE FIR



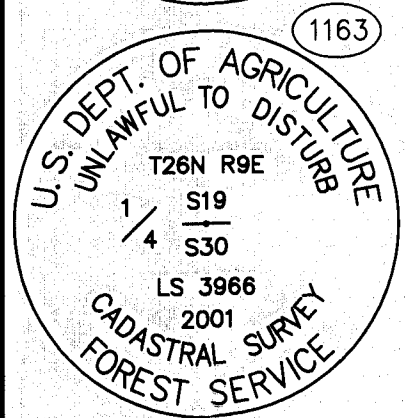
FOUND 26"x14"x4" STONE FALLEN OVER IN ROCK MOUND, PER GOVERNMENT FIELD NOTES. NO MARKINGS ARE VISIBLE ON STONE. MOUND IS 18"x48". ACCEPTED AS QUARTER CORNER BETWEEN SECTION 19 AND SECTION 20, TOWNSHIP 26 NORTH, RANGE 9 EAST, MOUNT DIABLO MERIDIAN. SET 2" IRON PIPE WITH 3 1/4" ALUMINUM CAP, STAMPED AS SHOWN. CORNER IS LOCATED ON SOUTHWESTERLY-FACING SLOPE WITH MODERATELY DENSE PINE, FIR AND CEDAR, APPROXIMATELY 250 FEET FROM DIRT ROAD. ROCK MOUND WAS REBUILT AND PAINTED RED. EXISTING BEARING TREE WAS FOUND WITH FOREST SERVICE LOCATION POSTER WHICH CALLS OUT SET MONUMENT. 1/2 CHAIN EAST OF THE TAG. DISTANCE WAS CHAINED OF 13.4. ALL TREES RECEIVED FOREST SERVICE 54-9 SURVEY MONUMENT SIGNS, AND MAG NAIL & WASHERS FOR BEARING AND DISTANCE.

1155BT SE N15°23'W - 42.5' 20" WHITE FIR
1155BT SW N88°08'E - 14.3' 11" SUGAR PINE



FOUND 1 1/2" IRON PIPE WITH 2 1/2" BRASS CAP, UP 0.30 FEET IN ROCK MOUND PER RECORD OF SURVEY 12 RS 54, PLUMAS COUNTY. ACCEPTED AS SECTION CORNER BETWEEN SECTION 19 AND SECTION 30, TOWNSHIP 26 NORTH, RANGE 9 EAST, MOUNT DIABLO MERIDIAN. CORNER IS LOCATED ON A GENTLE SOUTHERLY FACING SLOPE IN DENSE FIR, PINE AND CEDAR, APPROXIMATELY 80 FEET WESTERLY OF DIRT ROAD. ROCK MOUND WAS REBUILT TO 3 FEET IN DIAMETER AND 6 INCHES HIGH. SET POST WITH FOREST SERVICE 54-9 SURVEY MONUMENT SIGN 2 FEET NORTHERLY OF MONUMENT, PAINTED ROCK MOUND RED. FOUND EXISTING BEARING TREES WITH RING AND BLAZE SCAR. SCRAPPED AND CLEAN BLAZE SCAR AND REPAINTED RING RED. PUT FOREST SERVICE 54-9 SURVEY MONUMENT SIGNS ON THE BACK OF TREES AND FOREST SERVICE 54-3 BEARING TREE SIGNS ON THE FRONT. SET MAG NAIL & WASHERS FOR BEARING AND DISTANCE.

1161BT NE N12°16'E - 5.6' 22" WHITE FIR
1161BT SE S42°15'E - 13.2' 26" SUGAR PINE
1161BT SW S34°53'W - 12.5' 24" WHITE FIR

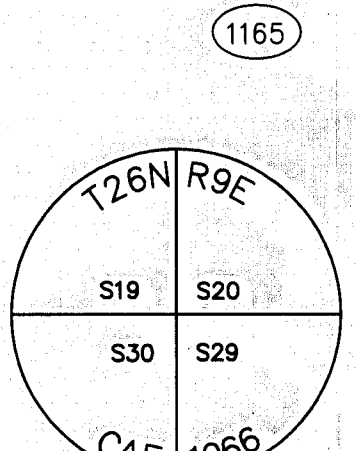


FOUND 5/8" ALUMINUM ROD WITH 3 1/4" ALUMINUM CAP, UP 0.30 FEET IN A ROCK MOUND PER RECORD OF SURVEY 12 RS 54, PLUMAS COUNTY. ACCEPTED AS QUARTER CORNER BETWEEN SECTION 19 AND SECTION 30, TOWNSHIP 26 NORTH, RANGE 9 EAST, MOUNT DIABLO MERIDIAN. CORNER IS LOCATED ON A MODERATE WESTERLY FACING SLOPE IN MODERATELY DENSE PINE AND FIR. ROCK MOUND WAS ADDED TO AND REBUILT TO BE 3 FEET IN DIAMETER AND 6 INCHES HIGH. SET POST WITH FOREST SERVICE 54-2 BOUNDARY SIGN AND FOREST SERVICE 54-9 MONUMENT SIGN 1 FOOT SOUTHERLY OF MONUMENT, PAINTED ROCK MOUND RED. EXISTING BEARING TREES WERE FOUND WITH BLAZE SCARS. SCRAPPED AND PAINTED RED RING AND BLAZE SCARS, PUT FOREST SERVICE 54-9 SURVEY MONUMENT SIGNS ON THE BACK OF TREES AND FOREST SERVICE 54-3 BEARING TREE SIGNS ON THE FRONT. SET MAG NAIL & WASHERS FOR BEARING AND DISTANCE.

1163BT NW N3°38'W - 16.0" 13" WHITE FIR
1163BT SW S33°42'W - 22.0' 18" SUGAR PINE

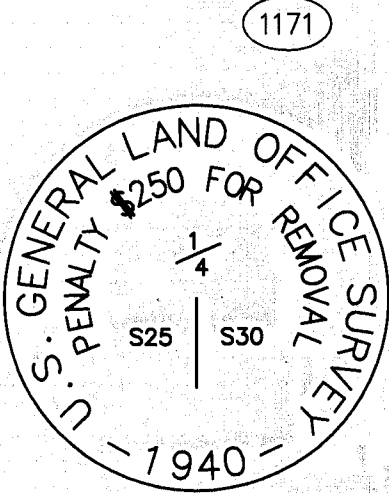
SURVEYOR'S NOTE:
ALL BEARING TREE AND REFERENCE MONUMENTS SHOWN IN THESE MONUMENT DESCRIPTIONS ARE TRUE NORTH BEARINGS.
TO CONVERT TO GRID BEARINGS ROTATE TRUE BEARINGS CLOCKWISE 0°38'42".

MONUMENT DESCRIPTIONS



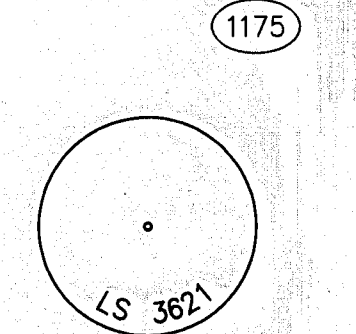
FOUND 3/4" IRON PIPE WITH 2 1/2" ALUMINUM CAP, UP 0.20 FEET IN ROCK MOUND PER RECORD OF SURVEY 12 RS 54, PLUMAS COUNTY. ACCEPTED AS SECTION CORNER OF SECTION 19, SECTION 20, SECTION 29 AND SECTION 30, TOWNSHIP 26 NORTH, RANGE 9 EAST, MOUNT DIABLO MERIDIAN. CORNER IS LOCATED ON A MODERATE SOUTHERLY FACING SLOPE IN THINNED FIR AND PINE. ROCK MOUND WAS REBUILT TO 2 FEET IN DIAMETER AND 4 INCHES HIGH. EXISTING BEARING TREES FOUND WITH VISIBLE BLAZE SCARS. ONE, A 16" STUMP, HAD REMAINING SCRIBING "R9 S19 BT". ESTABLISHED ANOTHER BEARING TREE, A 7" SUGAR PINE. ALL TREES PAINTED WITH RED RINGS, HAD BLAZES PAINTED, PUT FOREST SERVICE 54-9 SURVEY MONUMENT SIGNS ON THE BACK OF TREES AND FOREST SERVICE 54-3 BEARING TREE SIGNS ON THE FRONT. SET MAG NAIL & WASHERS FOR BEARING AND DISTANCE.

1165BT NW N33°05'W - 25.2' 7" SUGAR PINE
1165BT NE N32°16'E - 21.4' 14" WHITE FIR
1165BT SE S76°25'E - 28.2' 32" WHITE FIR (DEAD)
1165BT SW S63°15'W - 14.5' 11" SUGAR PINE
1165BT NW2 N50°41'W - 18.7' 16" STUMP



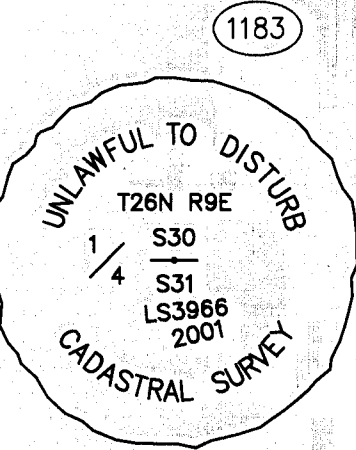
FOUND 3/4" WITH 2 1/2" BRASS CAP, UP 1 FOOT FROM GROUND, NO ROCK MOUND PER RECORD OF SURVEY 12 RS 54, PLUMAS COUNTY. ACCEPTED AS WESTERN QUARTER CORNER OF SECTION 30, TOWNSHIP 26 NORTH, RANGE 9 EAST, MOUNT DIABLO MERIDIAN. MONUMENT IS LOCATED ON A STEEP NORTHEASTERLY SLOPE IN SMALL OPEN AREA SURROUNDED BY PINE AND FIR. BUILT A ROCK MOUND 2 FEET DIAMETER BY 6 INCHES HIGH, CLEARED BRUSH FROM AROUND MONUMENT. SET POST WITH FOREST SERVICE 54-9 SURVEY MONUMENT SIGN 2 FEET NORTHERLY OF MONUMENT. FOUND EXISTING BEARING TREES, ONE 24" SUGAR PINE WITH FOREST SERVICE 54-3 BEARING TREE SIGN, NO BLAZE SCAR, ONE 22" DOUGLAS FIR WITH BLAZE SCAR, NO SIGN. SCRAPPED BLAZE ON FIR AND PAINTED BLAZE RED, ADDED RED RING AROUND TREE. PUT FOREST SERVICE 54-9 SURVEY MONUMENT SIGNS ON THE BACK OF TREES AND FOREST SERVICE 54-3 BEARING TREE SIGNS ON THE FRONT. ESTABLISHED A THIRD TREE, AN 8" WHITE FIR. ETCHED 6 INCH RING 6 FEET ABOVE GROUND, BLAZED AND SCRIBED "1/4 S30 BT". PAINTED BLAZE AND RING RED. PLACED MAG NAIL & WASHER FOR LINE AND DISTANCE IN ALL TREES.

1171BT NW N46°0'W - 88.8' 22" DOUGLAS FIR
1171BT SE S27°46'E - 14.1' 8" WHITE FIR
1171BT SW S79°09'W - 35.9' 24" SUGAR PINE



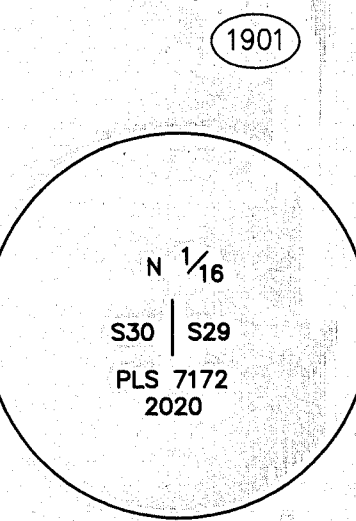
FOUND 5/8" REBAR WITH 1 1/2" ALUMINUM CAP, UP 0.20 FEET IN ROCK MOUND PER RECORD OF SURVEY 12 RS 53, PLUMAS COUNTY. ACCEPTED AS QUARTER CORNER BETWEEN SECTION 29 AND SECTION 30, TOWNSHIP 26 NORTH, RANGE 9 EAST, MOUNT DIABLO MERIDIAN. CORNER IS LOCATED ON A STEEP SOUTHEASTERLY-FACING SLOPE IN FOREST OF PINE, FIR AND OCCASIONAL CEDAR. ROCK MOUND WAS REBUILT AND ADDED TO TO BE 2 FEET IN DIAMETER AND 6 INCHES HIGH. SET POST WITH FOREST SERVICE 54-2 BOUNDARY SIGN AND FOREST SERVICE 54-9 MONUMENT SIGN 1 FOOT NORTHERLY OF MONUMENT, PAINTED ROCKS RED. FOUND EXISTING BEARING TREES, AN 18 INCH CEDAR AND A 32 INCH PONDEROSA PINE, BOTH WITH BLAZE SCARS. SCRAPPED AND CLEANED BLAZE SCARS, PAINTED RED. ADDED RED RING AROUND TREE. PUT FOREST SERVICE 54-9 SURVEY MONUMENT SIGNS ON THE BACK OF TREES AND FOREST SERVICE 54-3 BEARING TREE SIGNS ON THE FRONT. LEFT EXISTING FOREST SERVICE 54-5 LOCATION POSTER ON BACK OF TREE. SET MAG NAIL & WASHERS FOR BEARING AND DISTANCE.

1175BT NE N13°04'E - 17.6' 18" CEDAR
1175BT SW S47°09'W - 9.7' 32" PONDEROSA PINE



FOUND 5/8" DRIVE-IN WITH 3 1/4" ALUMINUM CAP, UP 0.50 FOOT FROM GROUND, NO ROCK PILE PER RECORD OF SURVEY 12 RS 54, PLUMAS COUNTY. ACCEPTED AS QUARTER CORNER BETWEEN SECTION 30 AND SECTION 31, TOWNSHIP 26 NORTH, RANGE 9 EAST, MOUNT DIABLO MERIDIAN. CORNER IS LOCATED ON A MODERATELY STEEP SOUTHERLY FACING SLOPE IN DENSE SMALL FIR AND PINE. GATHERED ROCKS AND MADE A MOUND 2 FEET IN DIAMETER AND 6 INCHES HIGH, PAINTED RED. LEFT EXISTING POST WITH FOREST SERVICE 54-9 SURVEY MONUMENT SIGN, IN GOOD CONDITION, 0.50 FOOT NORTHERLY OF MONUMENT. CLEARED SMALL TREES AROUND MONUMENT. FOUND EXISTING BEARING TREES, ONE 8 INCH DOUGLAS FIR, ONE 13 INCH DOUGLAS FIR, BOTH WITH BLAZE SCARS, NO SIGNAGE. SCRAPPED AND CLEANED BLAZE SCAR AND RING AROUND TREE, PAINTED BOTH RED. PUT FOREST SERVICE 54-9 SURVEY MONUMENT SIGNS ON THE BACK OF TREES AND FOREST SERVICE 54-3 BEARING TREE SIGNS ON THE FRONT. SET MAG NAIL & WASHERS FOR BEARING AND DISTANCE.

1183BT NE N13°54'E - 5.9' 11" DOUGLAS FIR
1183BT SE S22°07'E - 6.2' 8" DOUGLAS FIR



FOUND 2 1/4" ALUMINUM PIPE WITH 3 1/4" ALUMINUM CAP FLUSH IN ROCK MOUND STAMPED "N 1/16 S30 I S29 LS4388 1979", NO REFERENCE. MONUMENT IS LOCATED N84°37'W 18.37 FEET OF THE ESTABLISHED CORNER. MONUMENT NOT ACCEPTED. ESTABLISHED THE NORTH 1/16 CORNER BETWEEN SECTION 29 AND SECTION 30, TOWNSHIP 26 NORTH, RANGE 9 EAST, MOUNT DIABLO MERIDIAN BY PRORATION. SET 2 1/4" ALUMINUM PIPE "DIG-IN" MONUMENT WITH 3 1/4" ALUMINUM CAP STAMPED AS SHOWN. BUILT 24 INCH WIDE BY 10 INCH HIGH ROCK MOUND AND PAINTED ROCKS RED. CLEARED A 6 FOOT RADIUS AROUND MONUMENT. SET POST 1 FOOT SOUTHERLY OF MONUMENT WITH FOREST SERVICE 54-2 BOUNDARY SIGN AND FOREST SERVICE 54-9 SURVEY MONUMENT SIGNS. BURIED OLD MONUMENT UPSIDE DOWN IN HOLE NEXT TO NEW MONUMENT, ALONG WITH A MAGNET. CORNER IS LOCATED ON A STEEP NORTHEASTERLY SLOPE IN DENSE FOREST OF PREDOMINATLY WHITE FIR WITH SOME PINE, CEDAR AND THICK BUSHES. CORNER IS APPROXIMATELY 200 FEET SOUTHERLY OF A SMALL CLEARING. FOUND EXISTING BEARING TREE, A 24 INCH WHITE FIR WITH BLAZE SCAR AND RING AND A FOREST SERVICE 54-3 BEARING TREE SIGN. ESTABLISHED NEW BEARING TREE, A 16 INCH WHITE FIR. PAINTED BLAZE AND BLAZE SCAR, PUT FOREST SERVICE 54-9 SURVEY MONUMENT SIGNS ON THE BACK OF TREES AND FOREST SERVICE 54-3 BEARING TREE SIGNS ON THE FRONT. SET MAG NAIL & WASHERS FOR BEARING AND DISTANCE.

1901BT SE S58°54'E - 29.1' 24" WHITE FIR
1901BT SW S34°24'W - 48.4' 16" WHITE FIR

RECORD OF SURVEY

FOR

U.S.D.A. FOREST SERVICE

SECTIONS 7, 18, 19 AND 30, T.26 N., R.9 E., M.D.M.

PLUMAS COUNTY ~ CALIFORNIA

BY JOHNSON - FRANK & ASSOC., INC.

JUNE-JULY, 2020

SHEET 8 OF 9

16 RS 93