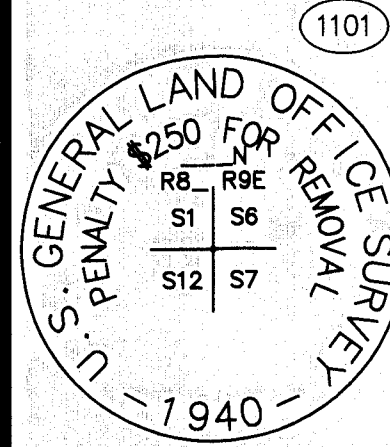
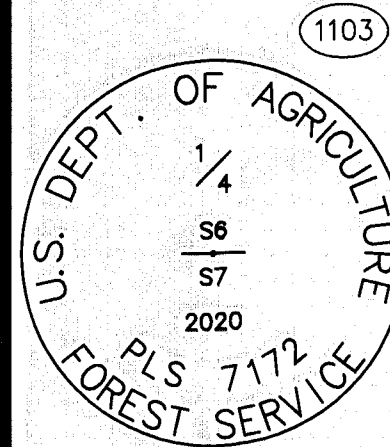


MONUMENT DESCRIPTIONS



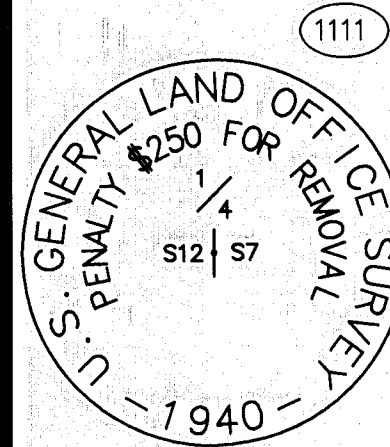
1101 FOUND 1 1/2" IRON PIPE WITH 2 1/2" GLO BRASS CAP, UP 0.50 FEET IN ROCK MOUND, STAMPED AS SHOWN PER THE ORIGINAL GLO SURVEY OF TOWNSHIP 26 NORTH, RANGE 8 EAST, MOUNT DIABLO MERIDIAN, ACCEPTED JANUARY 22, 1942. ACCEPTED AS THE SECTION CORNER COMMON TO SECTIONS 6 AND 7, TOWNSHIP 26 NORTH, RANGE 9 EAST, AND SECTIONS 1 AND 12, TOWNSHIP 26 NORTH, RANGE 8 EAST, MOUNT DIABLO MERIDIAN. CORNER LIES ON FLAT GROUND ON NORTHERLY EDGE OF A SMALL CLEARING APPROXIMATELY 18 FEET SOUTHWESTERLY OF THE CENTER OF A DIRT ROAD. ROCK MOUND WAS REBUILT AND ADDED TO, TO BE 2 FEET IN DIAMETER AND 8 INCHES HIGH. SET POST WITH FOREST SERVICE 54-9 MONUMENT SIGN 1.5 FEET SOUTHWESTERLY OF MONUMENT, PAINTED ROCKS RED. FOUND EXISTING BEARING TREES WITH FOREST SERVICE 54-3 BEARING TREE SIGNS AND BLAZE SCARS. BEARING TREES WERE PAINTED WITH A RED RING, AFFIXED WITH A FOREST SERVICE 54-9 MONUMENT SIGN ON THE BACK AND MAG NAIL & WASHER FOR BEARING AND DISTANCE:

1101BT NW	N22°48'W - 39.6'	48" SUGAR PINE
1101BT NE	N76°45'E - 14.6'	36" SUGAR PINE
1101BT SW	S24°33'W - 35.6'	27" WHITE FIR



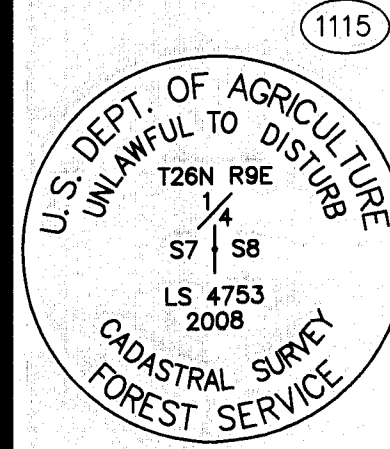
1103 FOUND 1-1/4" IRON PIPE WITH NO CAP, UP 0.20 FEET IN SMALL ROCK MOUND, NO REFERENCE, ACCEPTED AS 1/4 CORNER BETWEEN SECTIONS 6 AND 7, TOWNSHIP 26 NORTH, RANGE 9 EAST, MOUNT DIABLO MERIDIAN. SET NEW 3 1/4" ALUMINUM CAP STAMPED AS SHOWN. CORNER IS LOCATED ON LEVEL GROUND IN MODERATELY DENSE FOREST OF PINE, FIR AND CEDAR, APPROXIMATELY 425 FEET NORTHERLY OF A DIRT ROAD. ROCK MOUND WAS REBUILT AND ROCKS PAINTED RED. SET POST WITH FOREST SERVICE 54-2 BOUNDARY SIGN AND FOREST SERVICE 54-9 MONUMENT SIGN 1 FOOT SOUTHEASTERLY OF MONUMENT. ROCK MOUND IS 2 FEET IN DIAMETER AND 6 INCHES HIGH TWO EXISTING BEARING TREES WERE FOUND WITH K-TAGS, ONE WITH FOREST SERVICE 54-3 BEARING TREE SIGN, NO BLAZE SCARS. A THIRD TREE WAS FOUND TO HAVE FALLEN. OLD K-TAGS AND SIGNS ON BEARING TREES WERE REMOVED, RINGS PAINTED ON TREES, FOREST SERVICE 54-9 MONUMENT SIGNS WERE PUT ON BACK AND FOREST SERVICE 54-3 BEARING TREE SIGNS WERE PUT ON FRONT. MAG NAILS & WASHERS FOR BEARING AND DISTANCE WERE SET IN TREES:

1103BT NW	N89°17'W - 18.9'	18" WHITE FIR
1103BT NE	N60°13'E - 37.5'	19" WHITE FIR



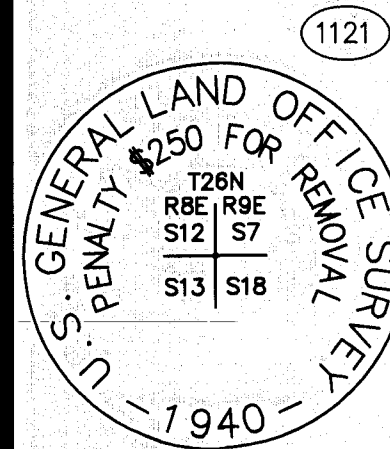
1111 FOUND 3/4" IRON PIPE WITH 2 1/2" GLO BRASS CAP, UP 1 FOOT IN ROCK MOUND, STAMPED AS SHOWN PER RECORD OF SURVEY 7 RS 94, PLUMAS COUNTY. ACCEPTED AS THE WEST 1/4 SECTION CORNER OF SECTION 7, TOWNSHIP 26 NORTH, RANGE 9 EAST, MOUNT DIABLO MERIDIAN. CORNER LIES ON FLAT GROUND AT THE NORTHEASTERLY EDGE OF A GRASSY CLEARING. ROCK MOUND WAS REBUILT AND ADDED TO, TO BE 3 FEET IN DIAMETER AND 8 INCHES HIGH. SET POST WITH FOREST SERVICE 54-2 BOUNDARY SIGN AND FOREST SERVICE 54-9 MONUMENT SIGN 2 FEET SOUTHWESTERLY OF THE MONUMENT, AND ROCK MOUND PAINTED RED. FOUND ONE BEARING TREE WITH FOREST SERVICE 54-3 BEARING TREE SIGN AND BLAZE SCAR, ONE TREE WITH FOREST SERVICE 54-3 BEARING TREE SIGN AND A PAINTED RING. FOUND STUMP OF A THIRD BEARING TREE, BADLY DECAYED. THE TREE HAD FALLEN TOWARDS THE MONUMENT AND SHOWED NO EVIDENCE OF BLAZES OR SIGNS. EXISTING BEARING TREES WERE PAINTED WITH A RED RING, AFFIXED WITH A FOREST SERVICE 54-9 MONUMENT SIGN ON THE BACK, 54-3 BEARING TREE SIGN ON THE FRONT. TWO NEW BEARING TREES WERE ESTABLISHED, ETCHED AND PAINTED 6 FEET ABOVE GROUND, BLAZED AND SCRIBED "1/4 S12 BT". PLACED FOREST SERVICE 54-9 MONUMENT SIGN ON THE BACK AND FOREST SERVICE 54-3 BEARING TREE SIGN ON THE FRONT. SET MAG NAIL & WASHER IN EACH TREE FOR BEARING AND DISTANCE:

1111BT NW1	N56°05'W - 14.1'	12" LODGEPOLE PINE
1111BT NW2	N47°10'W - 67.7'	16" LODGEPOLE PINE DEAD SNAG
1111BT NE	N65°32'E - 88.7'	27" JEFFREY PINE
1111BT SW	S73°01'W - 25.7'	8" LODGEPOLE PINE



1115 FOUND ALUMINUM ROD WITH 3 1/4" ALUMINUM CAP IN SMALL ROCK MOUND, STAMPED AS SHOWN NO REFERENCE, ACCEPTED AS 1/4 CORNER BETWEEN SECTIONS 7 AND 8, TOWNSHIP 26 NORTH, RANGE 9 EAST, MOUNT DIABLO MERIDIAN. CORNER IS LOCATED UNDER A FALLEN TREE, ON A STEEP NORTHERLY SLOPE IN DENSE FOREST OF FIR, PINE AND CEDAR. CORNER IS APPROXIMATELY 600 FEET SOUTHWESTERLY OF A DIRT ROAD. FALLEN TREE WAS CUT AWAY, MONUMENT WAS FOUND PLUMB UNDERNEATH. ROCK MOUND WAS REBUILT AND ADDED TO, TO BE 2 FEET IN DIAMETER AND 6 INCHES HIGH. ROCKS WERE PAINTED RED AND SET POST WITH FOREST SERVICE 54-2 BOUNDARY SIGN AND FOREST SERVICE 54-9 MONUMENT SIGN 1 FOOT NORTHERLY OF THE CORNER. FOUND EXISTING BEARING TREES WITH PAINTED RING AND BLAZE READING "1/4 S7 BT", FOREST SERVICE 54-3 BEARING TREE SIGN ON THE FRONT OF THE TREE AND FOREST SERVICE 54-9 SURVEY MONUMENT SIGN ON THE BACK. EXISTING BLAZES WERE REPAINTED ON BEARING TREES, EXISTING 54-9 SIGNS WERE LEFT; NEW 54-3 SIGNS WERE AFFIXED TO THE FRONT OF TREES, AND MAG NAIL & WASHERS WERE SET FOR BEARING AND DISTANCE:

1115BT NW	N63°59'W - 14.1'	8" CEDAR
1115BT NE	N61°31'E - 19.6'	9" WHITE FIR

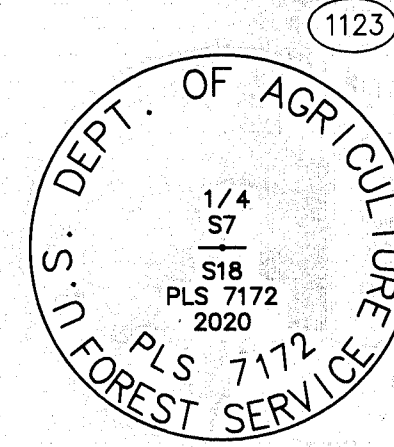


1121 FOUND 2" IRON PIPE WITH 3" GLO BRASS CAP, UP 0.60 FEET IN ROCK MOUND, STAMPED AS SHOWN PER RECORD OF SURVEY 7 RS 94, PLUMAS COUNTY. ACCEPTED AS SECTION CORNER COMMON TO SECTIONS 7 AND 18, TOWNSHIP 26 NORTH, RANGE 9 EAST AND SECTIONS 12 AND 13, TOWNSHIP 26 NORTH, RANGE 8 EAST, MOUNT DIABLO MERIDIAN. CORNER LIES ON A SMALL SIDE CUT ON THE NORTHWESTERLY SIDE OF A DIRT ROAD, APPROXIMATELY 12 FEET FROM THE CENTER OF THE ROAD. ROCK MOUND WAS REBUILT AND ADDED TO, TO BE 3 FEET IN DIAMETER AND 6 INCHES HIGH. ROCKS WERE PAINTED RED AND SET POST WITH FOREST SERVICE 54-2 BOUNDARY SIGN AND FOREST SERVICE 54-9 MONUMENT SIGN 1.5 FOOT NORTHWESTERLY OF THE CORNER. EXISTING BEARING TREES WERE FOUND WITH FOREST SERVICE 54-3 BEARING TREE SIGNS. ONE TREE HAD A VISIBLE BLAZE SCAR, TWO OTHERS DID NOT. BEARING TREES WERE PAINTED WITH A RED RING, AFFIXED WITH A 54-9 SIGN ON THE BACK, 54-3 SIGN ON THE FRONT, AND MAG NAIL & WASHER FOR BEARING AND DISTANCE:

1121BT NE	N54°14'W - 73.9'	30" WHITE FIR
1121BT NE	N28°19'3 - 117.5'	40" WHITE FIR
1121BT SW	S58°11'W - 11.3'	30" WHITE FIR

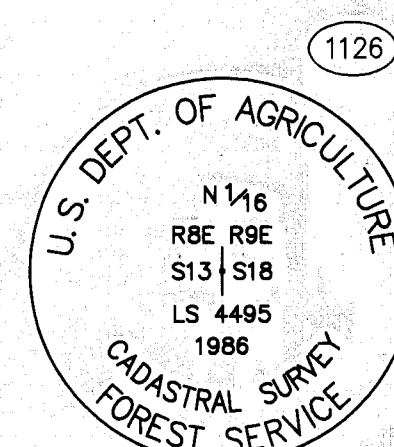
SURVEYOR'S NOTE:
ALL BEARING TREE AND REFERENCE MONUMENTS SHOWN IN THESE MONUMENT DESCRIPTIONS ARE TRUE NORTH BEARINGS.
TO CONVERT TO GRID BEARINGS ROTATE TRUE BEARINGS CLOCKWISE 0°38'42".

MONUMENT DESCRIPTIONS



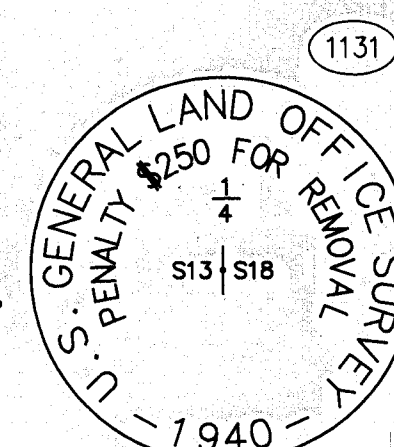
1123 FOUND 3/4" IRON PIPE IN SMALL ROCK MOUND, NO CAP, NO RECORD. ACCEPTED AS 1/4 CORNER BETWEEN SECTIONS 7 AND 18, TOWNSHIP 26 NORTH, RANGE 9 EAST, MOUNT DIABLO MERIDIAN. SET NEW 3 1/4" ALUMINUM CAP, STAMPED AS SHOWN. CORNER LIES AT THE BASE ON THE EASTERLY SIDE OF A 12 INCH WHITE FIR, ON FLAT GROUND, APPROXIMATELY 40 FEET NORTERLY OF A DIRT ROAD. FIR IS BLAZED AS A FOREST" TREE. ROCK MOUND WAS REBUILT AND ADDED TO, TO BE 3 FEET IN DIAMETER AND 4 INCHES HIGH. SET POST WITH FOREST SERVICE 54-2 BOUNDARY SIGN AND FOREST SERVICE 54-9 MONUMENT SIGN 1 FOOT NORTHWESTERLY OF MONUMENT, PAINTED ROCKS RED. FOUND TWO BEARING TREES WITH PAINTED RING AND K-TAGS, FOUND ONE STUMP WITH K-TAG. BEARING TREES WERE REPAINTED WITH A RED RING, AND AFFIXED WITH A FOREST SERVICE 54-9 SURVEY MONUMENT SIGN ON THE BACK. FOREST SERVICE 54-3 BEARING TREE SIGN ON THE FRONT. STUMP WAS AFFIXED WITH FOREST SERVICE 54-3 BEARING TREE SIGN ON THE FRONT WITH A RED RING PAINTED AROUND THE TOP OF THE STUMP. MAG NAIL & WASHER FOR BEARING AND DISTANCE:

1123BT NW	N49°15'W - 41.5'	10" WHITE FIR
1123BT NE	N3°38'E - 44.5'	26" WHITE FIR STUMP
1123BT SW	S67°37'W - 40.3'	19" WHITE FIR



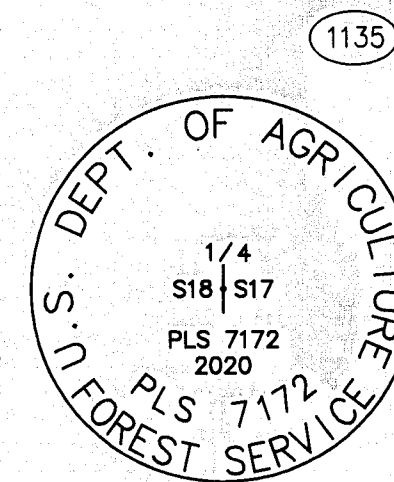
1126 FOUND 2 1/2" ALUMINUM PIPE WITH 3 1/4" ALUMINUM CAP, STAMPED AS SHOWN, UP 0.40 FEET IN ROCK MOUND PER RECORD OF SURVEY 7 RS 94, PLUMAS COUNTY. ACCEPTED AS NORTH 1/16 CORNER BETWEEN SECTION 18, TOWNSHIP 26 NORTH, RANGE 9 EAST AND SECTION 13, TOWNSHIP 26 NORTH, RANGE 8 EAST, MOUNT DIABLO MERIDIAN. CORNER IS LOCATED ON FLAT GRASSY GROUND JUST NORTHERLY OF AN 18 INCH DECAYED STUMP, APPROXIMATELY 20 FEET WESTERLY OF RUSH CREEK. ROCK MOUND WAS REBUILT AND ADDED TO, TO BE 2 FEET IN DIAMETER AND 6 INCHES HIGH. SET POST WITH FOREST SERVICE 54-2 BOUNDARY SIGN AND FOREST SERVICE 54-9 MONUMENT SIGN 1 FOOT NORTHWESTERLY OF MONUMENT, PAINTED ROCKS RED. FOUND EXISTING BEARING TREES WITH BLAZE SCARS, NO SIGNAGE. BEARING TREES WERE PAINTED WITH A RED RING AND BLAZED REPAINTED, AFFIXED WITH A FOREST SERVICE 54-9 SURVEY MONUMENT SIGN ON THE BACK, FOREST SERVICE 54-3 BEARING TREE SIGN ON THE FRONT, AND MAG NAIL & WASHER FOR BEARING AND DISTANCE:

1126BT NW	N49°19'W - 10.0'	13" FORKED LODGEPOLE PINE
1126BT SE	S48°24'E - 61.3'	15" LODGEPOLE PINE



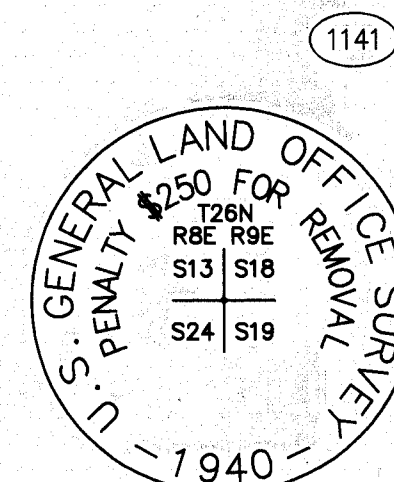
1131 FOUND 3/4" IRON PIPE WITH 3" BRASS CAP, UP 0.50' FEET IN ROCK MOUND, STAMPED AS SHOWN PER RECORD OF SURVEY 7 RS 94, PLUMAS COUNTY. ACCEPTED AS 1/4 CORNER BETWEEN SECTION 18, TOWNSHIP 26 NORTH, RANGE 9 EAST AND SECTION 13, TOWNSHIP 26 NORTH, RANGE 8 EAST, MOUNT DIABLO MERIDIAN. CORNER IS LOCATED ON GENTLE NORTHWESTERLY FACING SLOPE IN MODERATELY DENSE FOREST OF PINE AND FIR, APPROXIMATELY 1,250 FEET EASTERLY OF RUSH CREEK AND 350 FEET NORTHWESTERLY OF DIRT ROAD. ROCK MOUND WAS REBUILT AND ADDED TO, TO BE 2 1/2 FEET IN DIAMETER AND 1 FOOT HIGH. SET POST WITH FOREST SERVICE 54-2 BOUNDARY SIGN AND FOREST SERVICE 54-9 MONUMENT SIGN 2 FOOT WESTERLY OF MONUMENT, PAINTED ROCKS RED. FOUND EXISTING BEARING TREES, ONE WITH BLAZE SCAR, ONE WITHOUT, BOTH WITH 54-2 SIGN. SCRAPED OLD PAINT RING AND BLAZE SCAR AND REPAINTED, PAINTED NEW RING ON SECOND TREE. PUT FOREST SERVICE 54-9 SURVEY MONUMENT SIGNS ON THE BACK OF TREES AND FOREST SERVICE 54-3 BEARING TREE SIGNS ON THE FRONT. SET MAG NAIL & WASHERS FOR BEARING AND DISTANCE:

1131BT NW	N6°39'W - 40.3'	36" SUGAR PINE
1131BT SE	S78°40'E - 64.3'	26" WHITE FIR



1135 FOUND 1" IRON PIPE WITH NO CAP IN A SMALL ROCK MOUND, NO RECORD. ACCEPTED AS 1/4 CORNER BETWEEN SECTION 17 AND 18, TOWNSHIP 26 NORTH, RANGE 9 EAST, MOUNT DIABLO MERIDIAN. SET NEW 3 1/4" ALUMINUM CAP, STAMPED AS SHOWN, IRON PIPE WAS STRAIGHTENED AND ROCK MOUND WAS REBUILT TO 30 INCHES IN DIAMETER AND 6 INCHES HIGH. SET POST WITH FOREST SERVICE 54-9 MONUMENT SIGN 2 FEET NORTHERLY OF MONUMENT, PAINTED ROCKS RED. CORNER IS LOCATED ON GENTLE SOUTHWESTERLY SLOPE COVERED WITH MODERATELY DENSE FIR AND PINE TREES, APPROXIMATELY 525 FEET WESTERLY OF A DIRT ROAD. FOUND EXISTING BEARING TREES: A 16 INCH WHITE FIR STUMP ADJACENT TO A 36 INCH LIVING PINE, A 16 INCH WHITE FIR AND A 30 INCH SUGAR PINE. ALL WITH K-TAGS BUT NO VISIBLE BLAZES. A NEW BEARING TREE WAS ESTABLISHED, A 16 INCH DOUGLAS FIR, BLAZED AND SCRIBED "1/4 S20 BT". RED RING WAS PAINTED ON BEARING TREES, OR TOP OF STUMP, A SIGN READING 54-9 WAS PLACED ON THE BACK OF THE TREE OR STUMP, A SIGN READING 54-3 WAS PLACED ON THE FRONT, AND A MAG NAIL & WASHER PLACED FOR BEARING AND DISTANCE:

1135BT NW	N35°12'W - 35.6'	16" WHITE FIR
1135BT NE	N71°59' - 38.4'	16" DOUGLAS FIR
1135BT E	S77°40'E - 36.5'	30" SUGAR PINE STUMP
1135BT SE	S17°59'E - 39.5'	16" WHITE FIR STUMP



1141 FOUND 2" IRON PIPE WITH 3" GLO BRASS CAP, STAMPED AS SHOWN, UP 0.30 FEET IN ROCK MOUND PER RECORD OF SURVEY 7 RS 94, UNDER A FALLEN DEAD SNAG LOG. ACCEPTED AS THE SECTION CORNER COMMON TO SECTION 18 AND 19, TOWNSHIP 26 NORTH, RANGE 9 EAST AND SECTION 13 AND 24, TOWNSHIP 26 NORTH, RANGE 8 EAST, MOUNT DIABLO MERIDIAN. CORNER IS LOCATED ON A MODERATE NORTHERLY FACING SLOPE IN FIR, PINE AND CEDAR. SECTION OF DEAD SNAG COVERING MONUMENT WAS CUT AWAY, ROCK MOUND WAS REBUILT TO 3 FEET IN DIAMETER AND 1 FOOT HIGH. SET POST WITH FOREST SERVICE 54-9 MONUMENT SIGN 2 FEET WESTERLY OF MONUMENT, PAINTED ROCKS RED. FOUND EXISTING BEARING TREES WITH BLAZE SCARS. SCRAPED AND PAINTED RED RING AND BLAZE SCARS, PUT FOREST SERVICE 54-9 SURVEY MONUMENT SIGNS ON THE BACK OF TREES AND FOREST SERVICE 54-3 BEARING TREE SIGNS ON THE FRONT. SET MAG NAIL & WASHERS FOR BEARING AND DISTANCE:

1141BT NW	N01°36'W - 36.9'	18" DOUGLAS FIR
1141BT NE	N48°47'E - 25.8'	12" WHITE FIR
1141BT SE	S73°15'E - 23.7'	28" WHITE FIR DEAD SNAG
1141BT SW	S47°05'W - 6.0'	27" WHITE FIR

RECORD OF SURVEY
FOR
U.S.D.A. FOREST SERVICE
SECTIONS 7, 18, 19 AND 30, T.26 N., R.9 E., M.D.M.
PLUMAS COUNTY ~ CALIFORNIA
BY JOHNSON - FRANK & ASSOC., INC. JUNE-JULY, 2020 SHEET 7 OF 9

16 RS 92