

LINE	BEARING	LENGTH
L1	N65°42'36\"W	55.53'
L2	N62°21'24\"W	39.61'
L3	N84°06'17\"W	30.14'
L4	N64°00'59\"W	164.68'
L5	N65°51'00\"W	98.53'
L6	N57°35'42\"W	66.48'
L7	N19°39'44\"W	20.38'
L8	N22°55'02\"W	16.08'
L9	N68°58'32\"W	235.36'(R)
L10	S66°11'16\"W	21.08'
L11	N74°09'19\"W	199.33'
L12	N69°48'23\"W	22.75'
L13	N27°52'16\"W	14.20'
L14	N68°53'58\"W	11.71'
L15	S59°24'44\"W	14.57'
L16	N63°55'49\"W	68.80'

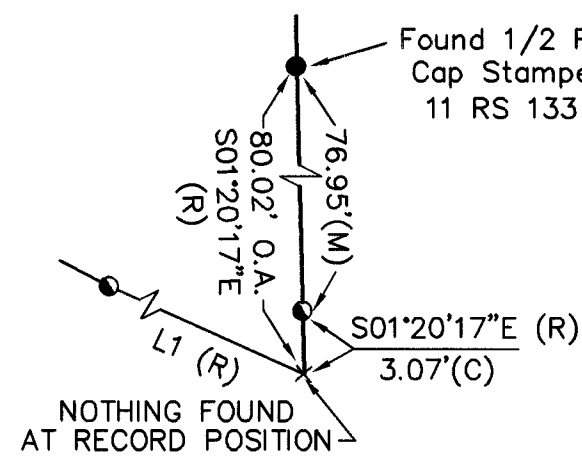
(ALL BEARINGS AND DISTANCES ARE RECORD PER 10 M 115 AND MEASURED UNLESS SHOWN OTHERWISE)

**BASIS OF BEARINGS**

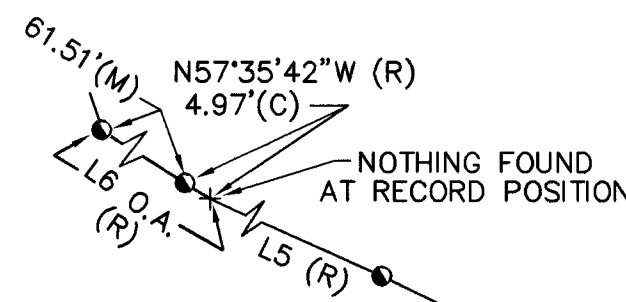
The Basis of Bearings for this map is the North line of the Designated Remainder property shown as N88°46'10\"E in Book 10 of Maps at Page 115, Plumas County Records.

**LEGEND**

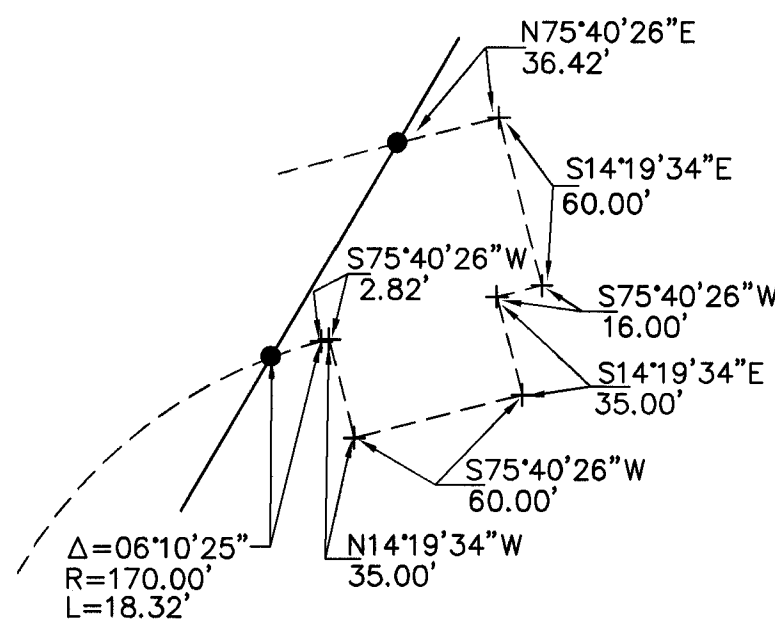
- FOUND Monument as noted.
- FOUND Rebar & Aluminum Cap stamped Cal Trans RW Per 14 RS 121
- + Nothing Found or set
- (R) Record Data per 10 M 115
- (R&M) Record data per 10 M 115 and Measured Data
- (C) Calculated Data
- (M) Measured Data



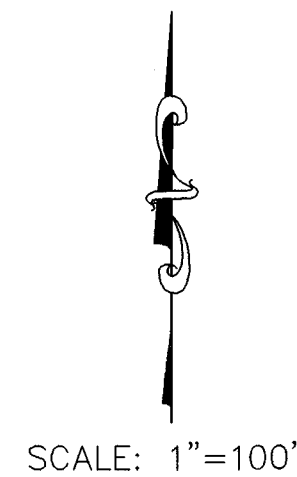
**DETAIL 1**  
NOT TO SCALE



**DETAIL 2**  
NOT TO SCALE



**DETAIL 3**  
NOT TO SCALE



**Eureka Heights Subdivision  
A Subdivision and Planned Development  
DESIGNATED REMAINDER  
FINAL MAP**

Of The Designated Remainder shown on the Eureka Heights Subdivision, Unit 1 Final Map recorded in Book 10 of Maps at Page 115, Plumas County Official Records, situate in the Southwest 1/4 of Section 32, Township 22 North, Range 13 East, M.D.M. In the Unincorporated Area of Plumas County, California

PREPARED BY:  
**BASTIAN ENGINEERING**  
211 POPLAR VALLEY ROAD  
BLAIRSDEN, CALIFORNIA 96103  
L.S. 7045

11 m 6