

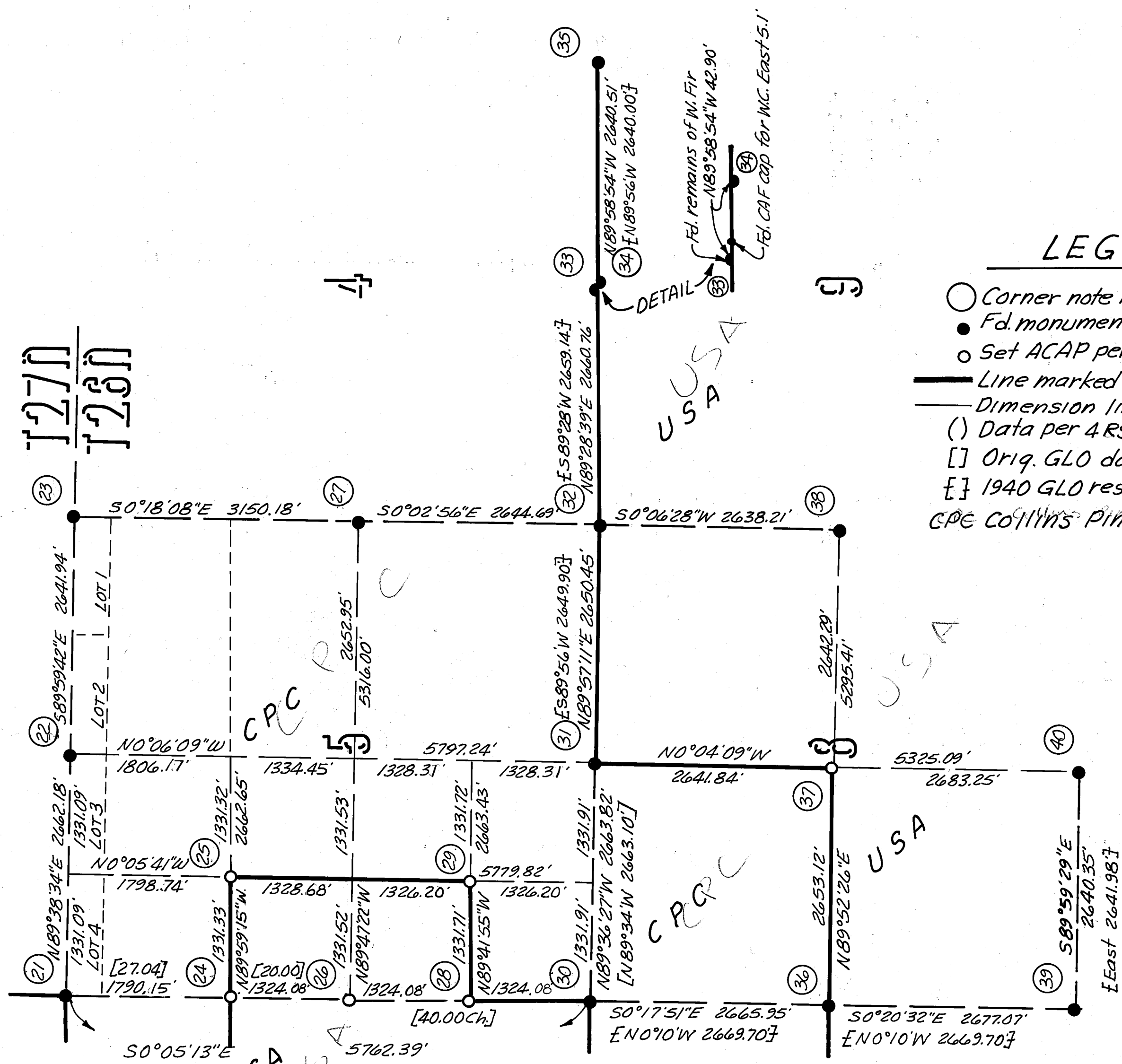
SURVEY HISTORY - T26N R7E

- 1875 Wm Minto surveys exterior and portion of Subdivision lines.
- 1903-04 Jacob Kaerth resurveys and completes subdivision-but work later rejected.
- 1929 Wm E Heister completes survey of West boundary.
- 1939-40 R. Wilson & H. Johnson resurvey and completes subdivision of twp.

Corner recovery and perpetuation has been accomplished by BLM, FS employees and private surveyors.

LEGEND

- Corner note NR - see sheets 6 & 7
 - Fd. monument per cor. notes.
 - Set ACAP per corner notes.
 - Line marked & posted to USFS Spec's.
 - Dimension line.
 - () Data per 4 RS 6 & 7.
 - [] Orig. GLO data.
 - [] 1940 GLO resurvey data.
- CPE Collins Pine Co.



SEE SHEET 1

SEE SHEET 3

RECORD OF SURVEY FOR LASSEN NATIONAL FOREST "HAMHUM CADASTRAL SURVEY" 'PLUMAS'

IN SECTIONS 2 & 12, T.26N., R.6E., SECTIONS 4, 5, 6, 7, 8 & 18, T.26N., R.7E., SECTIONS 5, 8, 17, 26, 27 & 35, T.27N., R.6E., SECTIONS 30 & 31, T.27N., R.7E., SECTION 31, T.28N., R.6E., ALL IN MOUNT DIABLO MERIDIAN & IN THE UNINCORPORATED TERRITORY OF THE COUNTY OF PLUMAS, STATE OF CALIFORNIA

BURGESS Land Surveys
 7036 Highway 99 South, Suite D
 Redding, California 96001

SCALE: 1"=1000'
 JIM FOSTER SR.
 OCTOBER, 1987
 SHEET 2 OF 7