

# **PLUMAS COUNTY**

## **2021 Wildfires**

## **Long-Term Recovery Plan**



*IN COLLABORATION WITH THE  
DIXIE FIRE COLLABORATIVE*



# **City of Portola**

# **Informational Briefing #2**

**TRACEY FERGUSON, PLUMAS COUNTY PLANNING DIRECTOR**

**APRIL 26, 2023**

**CITY COUNCIL MEETING**

# Core Plumas County Team

## RECOVERY SUPPORT FUNCTION (RSF) FRAMEWORK



✓ Tracey Ferguson, Planning Director

✓ Tyler Pew, LMNOP Design + Build



✓ Kevin Goss, Supervisor District 2

✓ John Mannle, Public Works Director



✓ John Steffanic, Fair Manager

✓ Jeff Engel, Supervisor District 5



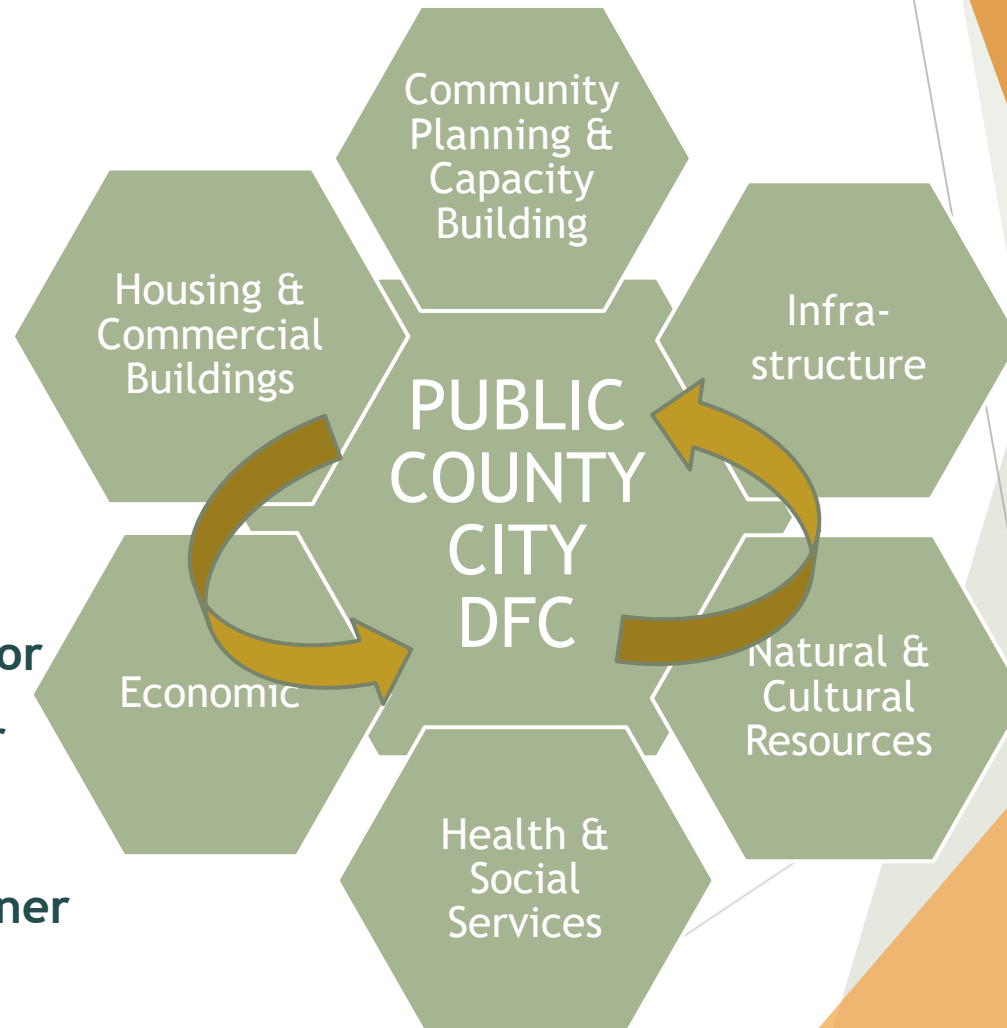
✓ Neal Caiazzo, Social Services Director

✓ Dana Loomis, Public Health Director



✓ Paul Russell, Museum Director

✓ Willo Vieira, Agricultural Commissioner



# Long-Term Recovery Plan PROCESS

- ▶ Phase 0 and Phase 1A - Dixie Fire Collaborative (fall 2021 - winter 2022)
- ▶ Phase 2 - Countywide Long-Term Recovery Plan (summer 2022 - summer 2023)
  - FACILITATES RECOVERY PLANNING
  - TIES TOGETHER FIRE IMPACTS AND RECOVERY NEEDS
  - ESTABLISHES VISION AND VALUES
  - INTEGRATES COMMUNITY ENGAGEMENT INPUT
  - IDENTIFIES AND PRIORITIZES RECOVERY PROJECTS
  - SUPPORTS AND DIRECTS RECOVERY PROJECT FUNDING SOURCES
  - DISCUSSES PLAN IMPLEMENTATION AND MAINTENANCE
- ▶ Phase 3 - Implementation (starting fall 2023)

# Long-Term Recovery Plan

## MAILESTONE SCHEDULE

**\*FEBRUARY - Community Meeting #1 - Intro to Vision, Values, & Potential Recovery Projects**

MARCH - Based on Public Input Refined Potential Recovery Projects

**\*APRIL - Community Meeting #2 - Confirm Vision & Values, Prioritize & Locate Recovery Projects**

MAY - Prioritize Recovery Projects Based on Public Input and Write Long-Term Recovery Plan

**\*JUNE - Community Meeting #3 - Release & Input on Public Review Draft Long-Term Recovery Plan**

JULY - Based on Public Input Refine Public Review Draft Long-Term Recovery Plan

AUGUST - County Board of Supervisors Consider Adoption of Long-Term Recovery Plan

# Long-Term Recovery Plan

## FEB/MAR 2023 INPUT COMMUNITY MEETING #1 & COMMUNITY SURVEY

- ▶ Venues / Attendance Information
- ▶ Number of Surveys Collected
- ▶ Vision Cards / Project Cards / Comment Cards Collected
- ▶ Potential Wildfire Recovery Project Preferences
- ▶ Community Survey Data Results
  - Demographic Information
  - Recovery Support Function (RSFs) Questions

### Plumas County 2021 Wildfires Long-Term Recovery Plan



in collaboration with



### SUMMARY REPORT

**FEBRUARY/MARCH 2023  
COMMUNITY MEETINGS & SURVEY  
DATA RESULTS**

# 54 RSF PROJECTS

## SUMMARY OF INPUT FROM FEB/MAR 2023 COMMUNITY MEETINGS & SURVEY RESPONSES

Potential Projects (54)		Top 10 Based on Community Input					Comments
	Indian Valley Community Services District Water and Sewer Projects	46	5	0	0		
	Broadband Improvements	45	13	0	0		
	Construction Trades Workforce Training Program	43	1	0	0		
	Greenville Safety Center (Sheriff’s Substation, IVCSD Fire & PDH Ambulance)	38	4	0	0		
	General Business & Marketplace Cooperative	37	1	0	0		
	Biomass Product Innovation	36	2	1	1		
	Wolf Creek Trail System	35	1	3	1		
	Commercial Meat Processing Feasibility Study	34	3	0	1		
	Residential Workforce Housing	32	6	2	1		
	Microgrids	32	3	0	0		

# Community Meeting #2

## APRIL 2023 AGENDA

- ✓ Discover how community input has shaped the plan so far—see the results in action!
- ✓ Confirm the Countywide Recovery Vision and Values—use the ballot boxes to vote for your picks.
- ✓ Help rank potential recovery projects—use a sticky dot to tell us your 1st 2nd and 3rd tier priorities?
- ✓ Where do you want to see specific projects located—use a sticky dot to pin the project on the County.
- ✓ Help shape the elements of a Greenville Town Center—use a post-it note to tell us what uses you think would be good.



# Community Meeting #2 Input

## CONFIRM VISION & VALUES

*Grab a ballot and cast your vote!*

***Community Meeting #1 – What are your Wildfire Recovery Values? What’s your Recovery Vision?***

**Rank Your Vision Statement:** Please rank your Top Vision Statement (1 highest, 3 least high).

Vision Statements	Rank
Recovered sustainable communities with infrastructure systems independence, diverse economic opportunities for all, prioritized public health and safety, inclusive and affordable housing types, and protected cultural resources and natural environments for generations to come.	
Resilient and prosperous recovered communities with supportive infrastructure systems, inclusive and affordable housing types, prioritized public health and social well-being, environmental and cultural stewardship, and an active next generation of entrepreneurs and leaders with opportunities for business innovation.	
Socially and environmentally thoughtful, culturally inclusive recovered healthy communities with affordable housing types in support of commercial and mixed-use spaces, empowered small businesses, and equitable and accessible economic possibilities sustained by resilient infrastructure systems.	



**Or re-write your own vision statement using any combination of the phrases above.**

**Rank Your Values:** Please rank your Top 5 wildfire recovery values (1 being highest, 5 being least high).

Build community unification		Design arts and recreational opportunities	
Encourage energy independence		Create social and cultural gathering places	
Enhance quality of life		Prioritize public health and safety	
Honor Maidu heritage		Promote economic sustainability	
Restore the natural environment		Develop resilient homes and businesses	
[WRITE IN] _____		[WRITE IN] _____	



# Community Meeting #2 Input

## PRIORITIZING RECOVERY

### 27 PROJECTS



(8)



(3)



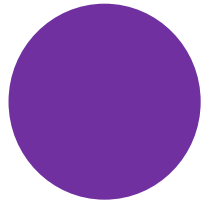
(7)



(4)



(5)



***Use a sticky dot to tell us your 1st 2nd and 3rd tier priorities – what's important to you?***

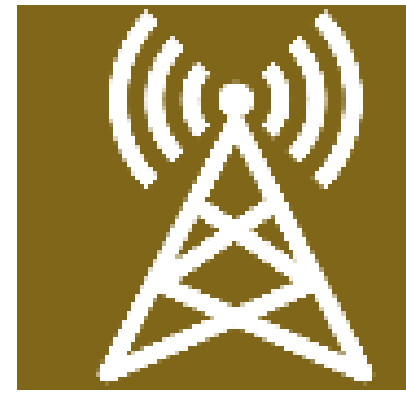
Project	Project Goal/ Description	Champion	Project Need	Funding/ Timing	Complexity	Priority
---------	------------------------------	----------	--------------	--------------------	------------	----------

# PRIORITIZING RECOVERY ECONOMIC POTENTIAL PROJECTS



- ✓ Connected Communities Project
- ✓ Feasibility Study – Countywide Gathering Places as Economic Drivers [Chester Town Plaza, Complete & Retain “The Spot” in Greenville, Quincy Visitor Center, Portola Visitor Center]
- ✓ Feasibility Study – Mountain Modular Home Plant
- ✓ Feasibility Study – USDA Certified Meat Processing System
- ✓ Indian Valley Disaster Academy
- ✓ Sacred Waters of Greenville Thermal Wellness Center
- ✓ Tourism Strategy – Leveraging Partnerships with Like Minded Organizations [Building Rural Economies with Rural Communities Assistance Corporation, Discover the Lost Sierra Economic Development Initiative, Plumas-Sierra-Lassen Chamber Coalition]

# PRIORITIZING RECOVERY INFRASTRUCTURE POTENTIAL PROJECTS



- ✓ Countywide Broadband and Electrical Power Capacity and Resiliency [Broadband Improvements, Microgrids/Electrical, Electric Vehicle (EV) Charging Stations]
- ✓ Dixie Fire Footprint Roadway Repairs and Needs
- ✓ Greenville/Indian Valley – Utility Infrastructure Master Plan [Broadband Improvements, Microgrids/Electrical, Electric Vehicle (EV) Charging Stations, Greenville Cemetery District Irrigation System & Secondary Fire Flow Protection for Greenville]

# PRIORITIZING RECOVERY HOUSING & COMMERCIAL BUILDINGS POTENTIAL PROJECTS

- ✓ Commercial Motel/RV Park/Seasonal Recreation
- ✓ Community Development Block Grant - Disaster Recovery Potential Programs [Multifamily Housing Program (MHP) & MHP Mitigation Set-Aside, Residential Subsidized Housing, Owner Occupied Housing Rehabilitation and Reconstruction Program (OOR) & OOR Mitigation Set-Aside]
- ✓ Construction Trades Workforce Training Program
- ✓ Development and Land Use Patterns [Countywide Residential Codes and Standards, Countywide Planning & Zoning, Greenville Downtown Design Guidelines, Greenville Commercial & Mixed-Use Development Market Analysis, Housing Market Study & Affordable Housing Needs Assessment (Countywide)]
- ✓ Home Hardening Retrofit Program
- ✓ [RE]Building & Permit Resource Center  
[Commercial + Residential [RE]Building, Small Developers [RE]Building]
- ✓ Residential Workforce Housing [Missing-Middle Housing]
- ✓ Volunteer Organization Home Rebuilds [Hope Crisis Response Network]



# PRIORITIZING RECOVERY HEALTH & SOCIAL SERVICES POTENTIAL PROJECTS



- ✓ Greenville Community Resilience Center  
[Greenville Library, Greenville Town Hall, General Business & Marketplace Cooperative, Maker Space & Sales Venue, Community Kitchen & Food Processing]
- ✓ Greenville Rancheria Medical and Dental Clinic
- ✓ Greenville Safety Center  
[Sheriff's Substation, IVCSD Fire, and PDH Ambulance]
- ✓ Greenville Wellness Center  
[Telemedicine Restoration & Expansion]

# PRIORITIZING RECOVERY NATURAL & CULTURAL RESOURCES POTENTIAL PROJECTS



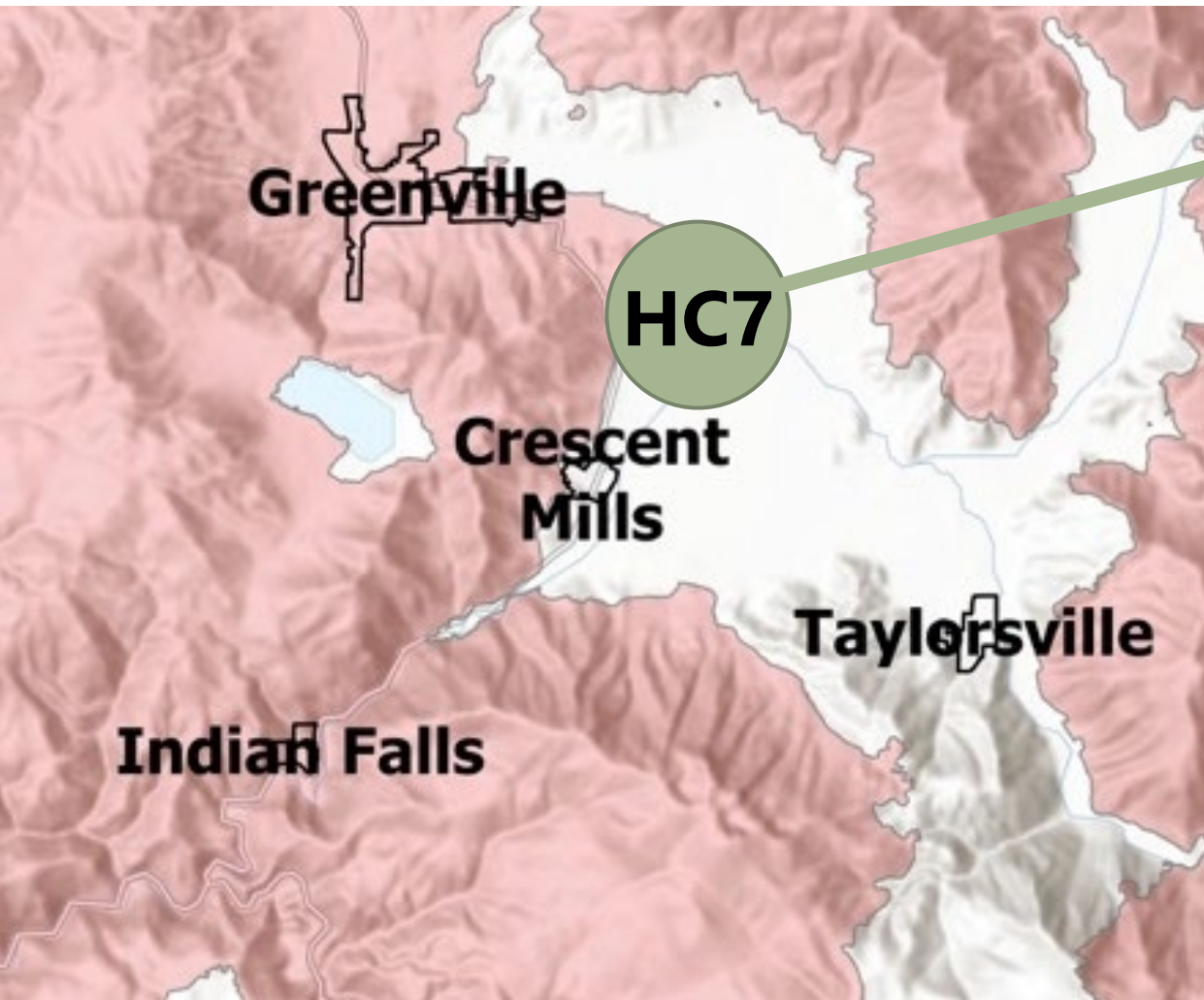
- ✓ Biomass Product Innovation  
[Wood Fiber Growing Media Feasibility Study]
- ✓ Greenville Community Park and Wolf Creek Trail System  
Enhancements [Hillside Project Learning Living Laboratory]
- ✓ Habitat and Watershed Restoration  
[Assessment of Post Fire Wildlife Movement, Post Fire  
Watershed Assessment, Watershed Restoration Coordinator, and  
Plumas Emergency Forest Restoration Team (EFRT)]
- ✓ Historical and Cultural Activities and Sites Restoration  
[Greenville Cy Hall Memorial Museum]
- ✓ Tribal Integration & Needs



# Community Meeting #2 Input

## POTENTIAL PROJECT LOCATIONS

### PIN THE PROJECT ON THE COUNTY



***Why you  
prefer the  
location.***

*Residential  
Workforce  
Housing [Missing-  
Middle Housing]*

#### Instructions:

1. Please see the reverse side of the community meeting agenda for a listing of potential recovery projects, with codes.
2. Think about where you'd locate a specific potential recovery project and write the recovery project code on a sticky dot and place the dot on the map in the approximate location.
3. If you'd like, take a sticky note and write why you prefer that project in that specific location and stick the note on the map, drawing a line to your sticky dot.
4. Repeat for multiple recovery projects, as desired.



# Community Meeting #2 Input

## GREENVILLE TOWN CENTER ELEMENTS

What do you like? What uses do you think would be good in a town center?

Write your ideas on a sticky note and stick it on this poster!



 <ul style="list-style-type: none"> <li>• Complete &amp; Retain "The Spot" in Greenville</li> <li>• Indian Valley Disaster Academy</li> </ul>	 <ul style="list-style-type: none"> <li>• Residential Workforce Housing</li> <li>• Greenville Downtown Design Guidelines</li> <li>• Greenville Commercial &amp; Mixed-Use Market Analysis</li> </ul>	 <ul style="list-style-type: none"> <li>• Greenville/Indian Valley – Utility Infrastructure Master Plan [Water and Sewer, Microgrids, Broadband, and Fire Flow Protection]</li> <li>• Dixie Fire Footprint Roadway Repairs and Needs</li> </ul>	 <ul style="list-style-type: none"> <li>• Greenville Community Resilience Center [Greenville Library, Greenville Town Hall, General Business &amp; Marketplace Cooperative, Maker Space &amp; Sales Venue, Community Kitchen &amp; Food Processing]</li> <li>• Greenville Wellness Center</li> <li>• Greenville Rancheria Medical and Dental Clinic</li> </ul>	 <ul style="list-style-type: none"> <li>• Wolf Creek Trail System Enhancements</li> <li>• Historical and Cultural Activities and Sites Restoration [Greenville Cy Hall Memorial Museum]</li> </ul>
Economic RSF	Housing & Commercial Buildings RSF	Infrastructure RSF	Health & Social Services RSF	Natural & Cultural Resources RSF



Greenville Hardware Store



Greenville Pharmacy



Town Green/Town Plaza



Performing Arts Center



Native American Cultural Center/Museum



Community Center



Senior Center



Community Garden



Learning Center



Public Art



Health Center

**Community Meeting #1 Input**

# **FOR MORE INFORMATION**

## **Please Stay in Touch**

- ✓ Be added to the Long-Term Recovery Plan email mailing list
- ✓ Share information with your neighbors
- ✓ Participate and provide project input and ideas
- ✓ Review and comment on the Long-Term Recovery Plan, once available
- ✓ Support project implementation

**Plumas Wildfire Recovery Email**

[plumaswildfirerecovery@countyofplumas.com](mailto:plumaswildfirerecovery@countyofplumas.com)

**Plumas County Website - Provide Community Workshop #2  
Input Virtually Through May 12, 2023**

<https://plumascounty.us/2964/Plumas-Wildfire-Recovery>