

ASSESSOR MAP LEGEND

COLOR	LAYER
[Red]	SECTIONS AND BLOCKS
[Orange]	UTILITIES
[Yellow]	AIRPORT
[Light Green]	STRUCTURE, "HOUSE"
[Green]	RAILROADS, GLO TRAVERSE
[Dark Green]	ASSESSOR'S PARCEL NUMBER, TOWNSHIP, CITY LIMITS, COUNTY LINES
[Blue]	FLOOD SURVEY
[Light Blue]	SUBDIVISIONAL TRACT LINES
[Cyan]	WATER
[Light Cyan]	ASSESSOR'S PARCEL PROPERTY LINES
[Light Green]	ADJACENT PARCEL, PAGE OR BOOK REFERENCE
[Yellow-Green]	HIWAYS, STREETS, ROADS AND TEXT
[Light Green]	GOLF COURSE
[Yellow]	MINERAL SURVEYS, PATENTS, RIGHTS
[Orange]	LOT & PARCEL DESIGNATORS, TICK MARKS AND TEXT
[Light Orange]	ALTERED PARCEL LINES AND BRIDGES
[Light Green]	MOUNTAIN LOCATION
[Yellow]	FENCE LINE
[Dark Green]	TAX RATE AREA
[Black]	DIMENSIONAL TEXT

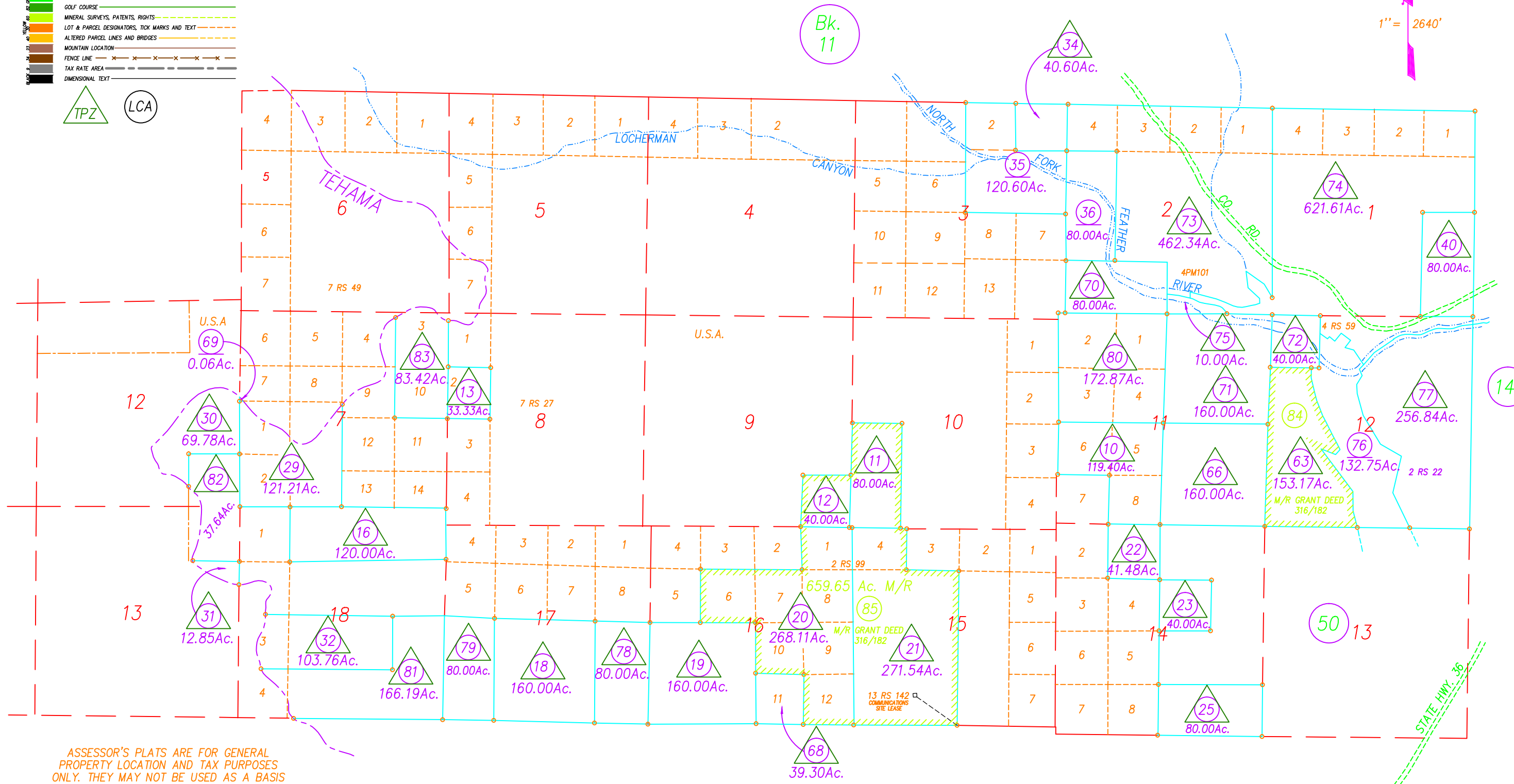


N 1/2 T. 28 N. R. 6 E. M.D.B.&M.
 POR. SEC. 12 & 13 T. 28 N. R. 5 E. M.D.B.&M.

Tax Rate Area
 53-035

1-13

1" = 2640'



ASSESSOR'S PLATS ARE FOR GENERAL PROPERTY LOCATION AND TAX PURPOSES ONLY. THEY MAY NOT BE USED AS A BASIS FOR LEGAL PROPERTY DESCRIPTIONS.

DRAWN BY GREGORY WITHROW
 UPDATED BY CORY BROMBY
 9/2/15

NOTE: Assessor's Parcel Numbers Shown in Circles.
 Assessor's Map Bk.1, Pg.13
 County of Plumas, Calif.