

◆	FOUND SECTION CORNER MONUMENT AS NOTED	
⊕	CALCULATED SECTION CORNER POSITION AS NOTED. NOTHING FOUND OR SET	
⊙	GEODETIC CONTROL POINT PER (R3)	APPEL ACCEPTED
×	DIMENSION POINT, NOTHING FOUND OR SET	NO
_____	PROPERTY BOUNDARY LINE	32"
-----	ADJACENT PROPERTY LINE	
- - - - -	SECTION LINE	
- - - - -	SECTION ALIQUOT LINE	
- - - - -	GEODETIC CONTROL TIE AS BACK- CALCULATED FROM FOUND MONUMENTS	
[- - -]	SHEET REFERENCE LINE	
(R1)	RECORD REFERENCE NUMBER	
(M)	MEASURED BEARING/DISTANCE	
(C)	CALCULATED BEARING/DISTANCE FROM FOUND MONUMENTS	
[]	RECORD BEARING/DISTANCE	
RS	RECORD OF SURVEY	

"HPGN D CA 02 ES" (DE4390) PER (R3)

FOUND 12"x10"x3" STONE IN A 3' DIAMETER
ROCK MOUND MARKED "1/4".
APPEARED TO BE A PART OF A LARGER STONE.
ACCEPTED AS THE N 1/4 CORNER OF SECTION 6,
T24N. R12E. MDB&M

NOTES FROM DECEMBER 1880 GLO SURVEY:
20"x14"x5" VOLCANIC STONE
32" DIAMETER PITCH PINE N55-1/2°E, 79 LINKS
20" DIAMETER FIR S68°W, 71 LINKS

FOUND 3 1/4" ALUMINUM USFS CAP
ON 5/8" ALUMINUM ROD N 1/4
CORNER OF SECTION 7, T24N,
R12E, MDB&M AS SHOWN ON

**CEDAR POINT
PROPERTIES, INC.
DOC. 2017-0003448
APN 009-100-009
CONTAINS 105.42
ACRES**

FOUND 3 1/2" BRASS BLM CAP
ON A 2 1/2" STEEL PIPE, 1/4 CORNER
COMMON TO SECTIONS 7, T24N, R12E
& 12, T24N, R11E, MDB&M AS SHOWN ON
14 RS 82

9(C)(K)
1) CALCULATED CENTER OF
SECTION 7, T24N, R12E, MDB&M
NOTHING FOUND OR SET

CALCULATED SW CORNER OF SECTION 7,
T24N, R12E, MDB&M BY SINGLE PROPORTION
AS SHOWN ON 14 RS 82

THE SURVEY WAS REQUESTED BY WOODARD & CURRAN ON BEHALF OF THE PROPERTY OWNERS FOR THE PURPOSE OF DELINEATING THE PROPERTY BOUNDARIES DESCRIBED IN DOCUMENT NO. 2017-0003448 RECORDED JULY 10, 2017 IN THE OFFICIAL RECORDS OF PLUMAS COUNTY, CALIFORNIA. THE SURVEY INCLUDES A PARTIAL RETRACEMENT OF THE ORIGINAL GLO SURVEYS BY WILLIAM MINTO, CONTRACTED JULY 21, 1880. MONUMENTS WERE ALSO FOUND FROM A RETRACEMENT OF PORTIONS OF SECTIONS 7 AND 8 THAT WAS PERFORMED BY DGA&V LAND SURVEYORS ON BEHALF OF THE FOREST SERVICE, AS DEPICTED ON THAT RECORD OF SURVEY FILED IN BOOK 14 OF SURVEYS, PAGES 82 THROUGH 88. MISSING CORNERS NEEDED FOR SUBDIVIDING THE SECTIONS WERE CALCULATED BY SINGLE PROPORTION FROM FOUND MONUMENTS OR ACCESSORIES, AS SHOWN HEREIN.

TWO PIPES WERE FOUND NEAR THE SOUTHEASTERLY BOUNDARY THAT WERE MARKED "TOWN SITE 7" AND "TOWN SITE 8". NO RECORDS COULD BE FOUND TO SHOW THEIR ORIGIN OR THEIR PURPOSE. THE PIPES DID NOT APPEAR TO BE FROM THE SAME ERA AS PATENT No. 1025718 WHICH CONSOLIDATED THE MINERAL CLAIMS. MAPCA CONTACTED THE PROPERTY OWNERS, THE BUREAU OF LAND MANAGEMENT, THE FOREST SERVICE, THE CALIFORNIA WATER RESOURCES BOARD, THE CALIFORNIA DEPARTMENT OF WATER RESOURCES, THE CALIFORNIA DEPARTMENT OF CONSERVATION, AND THE PLUMAS COUNTY MUSEUM IN SEARCH OF RECORDS THAT DOCUMENTED THE PURPOSE OF THE PIPES. THE OWNER'S HISTORICAL RECORDS NOTED THAT SOME SURVEYING HAD BEEN PERFORMED AT THE SITE, BUT THE FOCUS APPEARED TO BE ON ASSESSMENTS FOR RESUMING UNDERGROUND MINING OPERATIONS. THERE WERE NO REFERENCES TO SURVEYING THE PROPERTY BOUNDARIES IN THE DOCUMENTS THAT WERE PROVIDED BY THE OWNER. THERE ARE NO DESCRIPTIONS OR MAPS SHOWING THE LAYOUT OF THE TOWN OF WALKERMINE THAT SHOWED CORNER NUMBERS OR ANY INDICATION THAT THE TOWN BOUNDARIES WERE INTENDED TO BE ON THE ALIQUOT SUBDIVISION LINES. BECAUSE THERE IS NO EVIDENCE THAT THE PIPES WERE SET AS PART OF A CADASTRAL SURVEY FOR THE PURPOSE OF ESTABLISHING THE PROPERTY BOUNDARY AND BECAUSE THE PROPERTY BOUNDARIES ARE COMMON LINES WITH THE PUBLIC LAND (PLUMAS NATIONAL FOREST) THAT WAS THE FOCUS OF THE PATENT DOCUMENT, THE PIPES ARE NOT ACCEPTED AS THE PROPERTY BOUNDARY MONUMENTS AND THE SURVEYOR'S MONUMENTS WERE SET AT THE CALCULATED CORNERS OF THE ALIQUOT PARTS.

THIS MAP CORRECTLY REPRESENTS A SURVEY MADE BY ME OR UNDER MY DIRECTION IN CONFORMANCE WITH THE REQUIREMENTS OF THE PROFESSIONAL SURVEYORS' ACT AT THE REQUEST OF REMEDIATION MANAGEMENT SERVICES COMPANY DURING THE MONTHS OF AUGUST, 2023 THROUGH FEBRUARY, 2024.

JAMES R. BEDARD
CALIFORNIA LICENSED LAND SURVEYOR NO. 8214

"HPGN CA 02 27"
(KS2012) PER (R3)

THIS MAP HAS BEEN EXAMINED IN ACCORDANCE WITH SECTION 8766
OF THE PROFESSIONAL LAND SURVEYOR'S ACT ON THIS 12 DAY OF

Aug 5 20 24

R Tom Hunter
 (Signed and sealed) TOM HUNTER
 L.S. (or R.C.E.) No. RCE 30515

FILED THIS 13 DAY OF August, 2024 AT 2:24 PM. IN BOOK 17
OF RECORDS OF SURVEY AT PAGE 374 AT THE REQUEST OF THE
PIUMAS COUNTY SURVEYOR

FILING FEE: \$ 99.00

FILE No.: 2024-0003627

MARCY DeMARTILE
PLUMAS COUNTY CLERK-RECORDER

0 225 450 900 1800 2700

SCALE: 1" = 900'



— LOCATION OF CORNER COMMON TO SECTIONS
5, 4, 8 & 9, T24N, R12E, MDB&M AS ESTABLISHED FROM
BEARING TREE. NOTHING FOUND OR SET

FOUND TAGGED BEARING TREE: N02°E, 67 LINKS

NOTES FROM JANUARY 1881 GLO SURVEY:
14"x12"x8" GRANITE STONE
20" DIAMETER FIR N2-1/2°E, 67 LINKS
19" DIAMETER FIR S8°W, 62 LINKS
26" DIAMETER FIR N76-1/2°W, 100 LINKS

— CALCULATED E 1/4 OF SECTION 8, T24N, R12E,
MDB&M BY SINGLE PROPORTION
NOTHING FOUND OR SET

NOTES FROM JANUARY 1881 GLO SURVEY:
16"X10"X6" GRANITE STONE MOUND
60" DIAMETER PINE N12°W 53 LINKS

FOUND 2' DIAMETER ROCK MOUND. NO IDENTIFIABLE STONE.
CENTER OF MOUND ACCEPTED AS BEST EVIDENCE OF CORNER
COMMON TO SECTIONS 8, 9, 16 & 17, T24N, R12E, MDB&M

FOUND TAGGED BEARING TREE: 36" PINE N24°E, 53 LINKS

NOTES FROM JANUARY 1881 GLO SURVEY:
12"x9"x6" GRANITE STONE
20" DIAMETER PINE S21°E, 66 LINKS
28" DIAMETER PINE S60°W, 70 LINKS
18" DIAMETER PINE N53-1/2°W, 80 LINKS
8" DIAMETER PINE N52-1/2°W, 80 LINKS

NORTH 0°58'59" WEST BETWEEN A FOUND 3 1/4" ALUMINUM USFS CAP ON 5/8" ALUMINUM ROD ACCEPTED AS THE 1/4 CORNER COMMON TO SECTIONS 7 & 8, T24N, R12E, MDB&M AND A FOUND 3 1/4" ALUMINUM USFS CAP ON 5/8" ALUMINUM ROD ACCEPTED AS THE CORNER COMMON TO SECTIONS 5, 6, 7 & 8, T24N, R12E, MDB&M AS SHOWN ON 14 RS 85 IN THE OFFICIAL RECORDS OF PLUMAS COUNTY, CALIFORNIA. ALL DIMENSIONS SHOWN ARE STATE PLANE GRID DISTANCES IN U.S. SURVEY FEET.

**RECORD OF SURVEY
FOR
REMEDIATION MANAGEMENT SERVICES
COMPANY**

SITUATE IN LOT 5; THE SW1/4 NW1/4 NW1/4 NW1/4; NW1/4 SW1/4 NW1/4 NW1/4; AND SW1/4 SW1/4 NW1/4 NW1/4 NW1/4 OF SECTION 5, THE SE1/4 SE1/4 NE1/4 NE1/4 OF SECTION 6, THE NE1/4 NE1/4 NE1/4 NE1/4; S1/2 NE1/4 NE1/4 NE1/4; S1/2 NW1/4 NE1/4 NE1/4; SE1/4 NE1/4 NW1/4 NE1/4; E1/2 SE1/4 NW1/4 NE1/4; E1/2 NE1/4 SW1/4 NE1/4; SW1/4 NE1/4 NE1/4; NW1/4 SE1/4 NE1/4; SE1/4 NE1/4 NE1/4; NE1/4 SE1/4 NE1/4 OF SECTION 7, AND THE NW1/4 NW1/4 NW1/4 NW1/4; S1/2 NW1/4 NW1/4 NW1/4; SW1/4 NW1/4 NW1/4; N1/2 NW1/4 SW1/4 NW1/4 OF SECTION 8

**TOWNSHIP 24 NORTH, RANGE 12 EAST, M.D.B.&M.
PLUMAS COUNTY, CALIFORNIA**



580 MOUNT ROSE STREET
RENO, NV 89509
(775) 432-2067

SHEET 1 OF 4

17 RS 037

SEE SHEET 3

66' WIDE ROAD EASEMENT BENEFITTING THE
US FOREST SERVICE PER DOC. 4696, B. 194,
P. 406, OFFICIAL RECORDS OF PLUMAS CO.

CEDAR POINT PROPERTIES, INC.
DOC. 2017-0003448
APN 009-100-009
CONTAINS 105.42 ACRES ±

USA
APN 009-100-USA



FOUND 3 1/4" ALUMINUM USFS CAP
ON 5/8" ALUMINUM ROD 1/4 CORNER
COMMON TO SECTIONS 7 & 8, T24N,
R12E, MDB&M AS SHOWN ON
14 RS 85

PLUMAS COUNTY ROAD 112
(BECKWORTH-TAYLORSVILLE ROAD)
PRESUMED PUBLIC ROAD, LOCATION
AND WIDTH DEFINED BY THE EXTENTS
OF GRADING AND IMPROVEMENTS

PLUMAS COUNTY ROAD 112A
(WALKER MINE ROAD)
PRESUMED PUBLIC ROAD, LOCATION
AND WIDTH DEFINED BY THE EXTENTS
OF GRADING AND IMPROVEMENTS

PLUMAS COUNTY ROAD 112
(BECKWORTH-TAYLORSVILLE ROAD)
PRESUMED PUBLIC ROAD, LOCATION
AND WIDTH DEFINED BY THE EXTENTS OF
GRADING AND IMPROVEMENTS

CALCULATED CENTER OF
SECTION 7, T24N, R12E, MDB&M
NOTHING FOUND OR SET

LEGEND

- SET 5/8" REBAR CAPPED
"PLS 8214"
- FOUND MONUMENT AS NOTED
- ◆ FOUND SECTION CORNER
MONUMENT AS NOTED
- × DIMENSION POINT, NOTHING
FOUND OR SET
- PROPERTY BOUNDARY LINE
- - - ADJACENT PROPERTY LINE
- - - EASEMENT LINE
- - - SECTION LINE
- - - SECTION ALIQUOT LINE
- (M) MEASURED BEARING/DISTANCE
- (C) CALCULATED BEARING/DISTANCE
FROM FOUND MONUMENTS
- [] RECORD BEARING/DISTANCE
- RS RECORD OF SURVEY

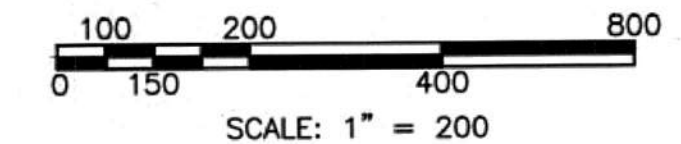
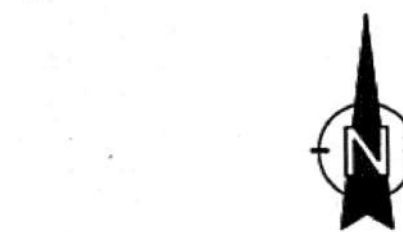
REFERENCES:

1. FIELD NOTES AND PLATS BY WILLIAM MINTO, DEPUTY SURVEYOR
FOR THE U.S. GENERAL LAND OFFICE FOR SURVEYS DATED
DECEMBER 20 THROUGH DECEMBER 22, 1880.
2. SUPPLEMENTAL PLAT SHOWING THE SUBDIVISION OF SECTIONS 5
AND 6, TOWNSHIP 24 NORTH, RANGE 12 EAST, MOUNT DIABLO
BASE AND MERIDIAN, APPROVED BY THE GENERAL LAND OFFICE
AUGUST 27, 1928.
3. RECORD OF SURVEY FOR U.S.D.A. PLUMAS NATIONAL FOREST
RECORDED JULY 19, 2007 IN BOOK 14 OF RECORDS OF
SURVEYS AT PAGES 82 THROUGH 88, DOCUMENT NO.
2007-0005875 IN THE OFFICIAL RECORDS OF PLUMAS COUNTY,
CALIFORNIA.

VICINITY MAP

	31	32	33
T25N			
T24N	6	5	4
R11E			
R12E	7	8	9

SITE



RECORD OF SURVEY FOR REMEDIATION MANAGEMENT SERVICES COMPANY

SITUATE IN LOT 6; THE SW1/4 NW1/4 NW1/4 NW1/4;
NW1/4; AND SW1/4 SW1/4 NW1/4 NW1/4 OF SECTION 5, THE SE1/4 SE1/4
NE1/4 NE1/4 OF SECTION 6, THE NE1/4 NE1/4 NE1/4; S1/2 NE1/4
NE1/4 NE1/4; S1/2 NW1/4 NE1/4 NE1/4; SE1/4 NE1/4 NE1/4; E1/2
SE1/4 NW1/4 NE1/4; E1/2 NE1/4 SW1/4 NE1/4; SW1/4 NE1/4 NE1/4; NW1/4
SE1/4 NE1/4; SE1/4 NE1/4 NE1/4; NE1/4 SE1/4 NE1/4 OF SECTION 7, AND
THE NW1/4 NW1/4 NW1/4 NW1/4; S1/2 NW1/4 NW1/4 NW1/4; SW1/4 NW1/4
NW1/4; N1/2 NW1/4 SW1/4 NW1/4 OF SECTION 8

TOWNSHIP 24 NORTH, RANGE 12 EAST, M.D.B.&M.
PLUMAS COUNTY, CALIFORNIA

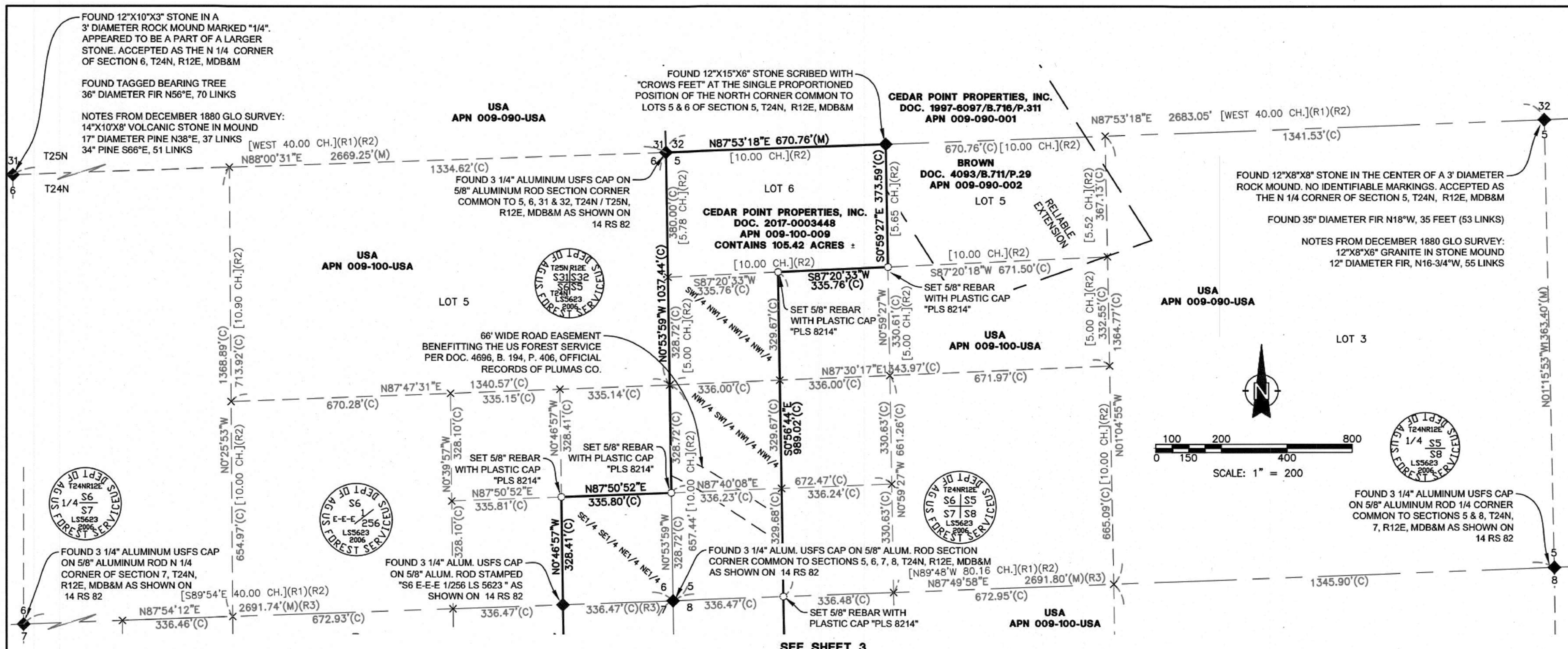
MAPCA
SURVEYS INC.

580 MOUNT ROSE STREET
RENO, NV 89509
(775) 432-2067

SHEET 2 OF 4

17 RS 038





GEODETIC CONTROL (R3):

"HPGN D CA 02 ES" (DF4390) EPOCH: MARCH, 2003
 LATITUDE 40°10'42.49563" N (STATE PLANE N 1949611.19)
 LONGITUDE 121°05'35.39575" W (STATE PLANE E 6815050.79)

"HPGN CA 02 27" (KS2012) EPOCH: AUGUST 1996
 LATITUDE 39°51'14.41395" N (STATE PLANE N 1832871.05)
 LONGITUDE 120°41'06.40820" W (STATE PLANE E 6930833.50)

STATE PLANE COORDINATES:

NAD83 CALIFORNIA ZONE 1, US FEET

CORNER	NORTHING	EASTING
N1/4 S7	1874228.174	6933205.989 (R3)(M)
N1/4 S8	1874428.440	6938585.794 (R3)(M)
W1/4 S7	1871427.808	6930672.842 (R3)(M)
E1/4 S7	1871697.227	6935941.044 (R3)(M)
SE S7	1869042.449	6935943.866 (R3)(M)
W1/4 S18	1866092.421	6930716.713 (R3)(M)
N1/4 S6	1875599.887	6933206.826 (M)
NE LOT 6	1875717.355	6936544.776 (M)
N1/4 S5	1875791.504	6938555.700 (M)
SE S8	1869295.170	6941361.993 (M)
NE S7	1874326.646	6935895.919 (M)

MULTIPLY MEASURED DISTANCES BY 1.0003024 TO
 COMPUTE GROUND DISTANCES

LEGEND

- SET 5/8" REBAR CAPPED
 "PLS 8214"
- ◆ FOUND SECTION CORNER
 MONUMENT AS NOTED
- ⊕ CALCULATED SECTION CORNER
 POSITION AS NOTED. NOTHING
 FOUND OR SET
- × DIMENSION POINT, NOTHING
 FOUND OR SET
- PROPERTY BOUNDARY LINE
- - - ADJACENT PROPERTY LINE
- - - SECTION LINE
- - - SECTION ALIQUOT LINE
- (R1) RECORD REFERENCE NUMBER
- (M) MEASURED BEARING/DISTANCE
- (C) CALCULATED BEARING/DISTANCE
 FROM FOUND MONUMENTS
- [] RECORD BEARING/DISTANCE
- RS RECORD OF SURVEY

RECORD OF SURVEY FOR REMEDIATION MANAGEMENT SERVICES COMPANY

SITUATE IN LOT 6; THE SW1/4 NW1/4 NW1/4 NW1/4; NW1/4 SW1/4 NW1/4
 NW1/4; AND SW1/4 SW1/4 NW1/4 NW1/4 OF SECTION 5, THE SE1/4 SE1/4
 NE1/4 NE1/4 OF SECTION 6, THE NE1/4 NE1/4 NE1/4 NE1/4; S1/2 NE1/4
 NE1/4 NE1/4; S1/2 NW1/4 NE1/4 NE1/4; SE1/4 NE1/4 NW1/4 NE1/4; E1/2
 SE1/4 NW1/4 NE1/4; E1/2 NE1/4 SW1/4 NE1/4; SW1/4 NE1/4 NE1/4; NW1/4
 SE1/4 NE1/4; SE1/4 NE1/4 NE1/4; NE1/4 SE1/4 NE1/4 OF SECTION 7, AND
 THE NW1/4 NW1/4 NW1/4 NW1/4; S1/2 NW1/4 NW1/4 NW1/4; SW1/4 NW1/4
 NW1/4; N1/2 NW1/4 SW1/4 NW1/4 OF SECTION 8
 TOWNSHIP 24 NORTH, RANGE 12 EAST, M.D.B.&M.
 PLUMAS COUNTY, CALIFORNIA

MAPCA
 SURVEYS INC.

580 MOUNT ROSE STREET
 RENO, NV 89509
 (775) 432-2067

SHEET 4 OF 4

17 RS 040