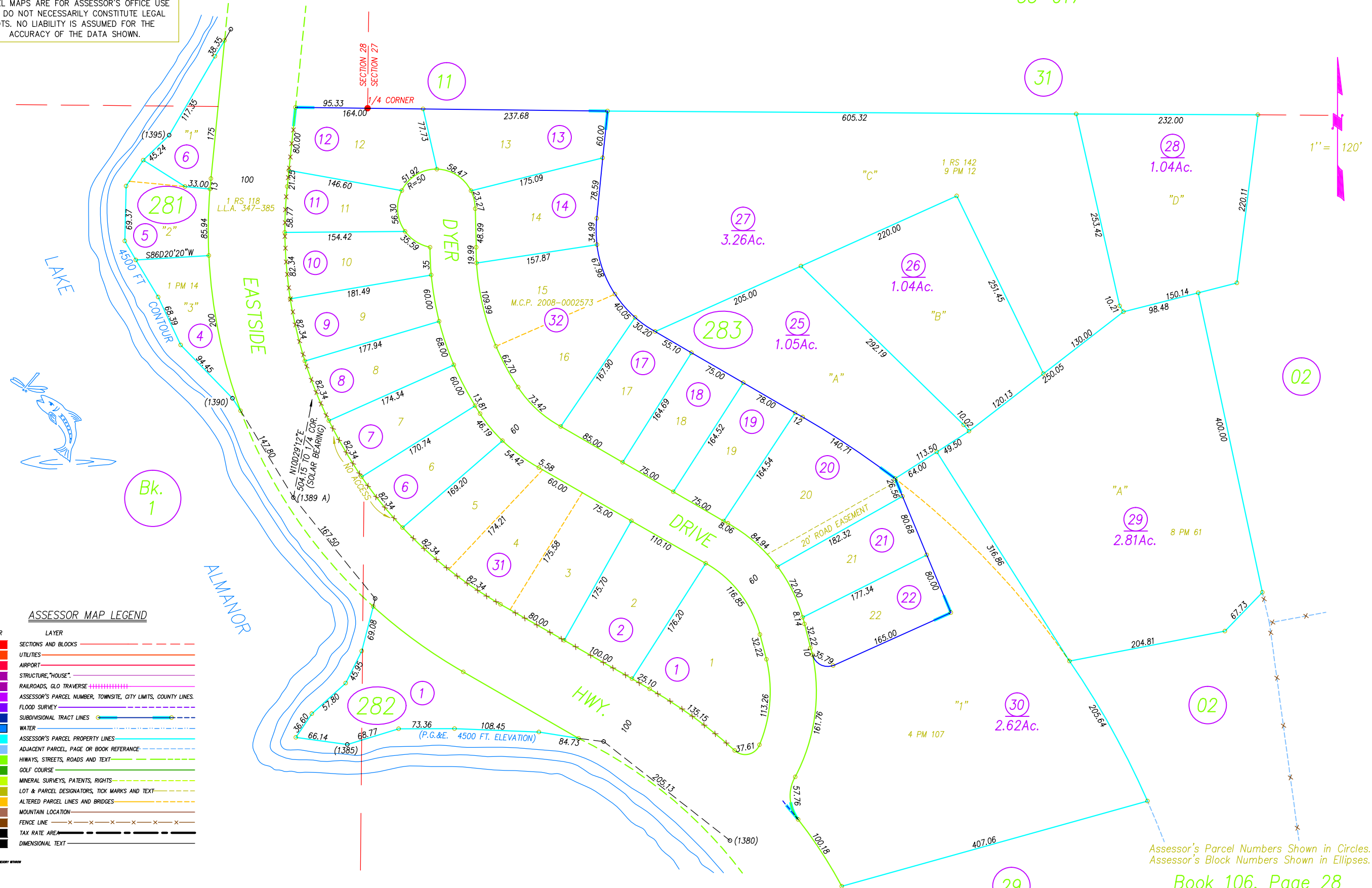


NOTE: ALL INFORMATION SHOWN ON ASSESSOR  
PARCEL MAPS ARE FOR ASSESSOR'S OFFICE USE  
AND DO NOT NECESSARILY CONSTITUTE LEGAL  
LOTS. NO LIABILITY IS ASSUMED FOR THE  
ACCURACY OF THE DATA SHOWN.



1" = 120'

**ASSESSOR MAP LEGEND**

COLOR	LAYER
Red	SECTIONS AND BLOCKS
Orange	UTILITIES
Yellow	AIRPORT
Green	STRUCTURE, "HOUSE"
Blue	RAILROADS, GLO TRAVERSE
Purple	ASSESSOR'S PARCEL NUMBER, TOWNSITE, CITY LIMITS, COUNTY LINES.
Light Blue	FLOOD SURVEY
Dark Blue	SUBDIVISION TRACT LINES
Light Green	WATER
Light Cyan	ASSESSOR'S PARCEL PROPERTY LINES
Light Purple	ADJACENT PARCEL, PAGE OR BOOK REFERENCE
Light Yellow	HIWAYS, STREETS, ROADS AND TEXT
Light Green	GOLF COURSE
Light Blue	MINERAL SURVEYS, PATENTS, RIGHTS
Light Purple	LOT & PARCEL DESIGNATORS, TICK MARKS AND TEXT
Light Yellow	ALTERED PARCEL LINES AND BRIDGES
Light Blue	MOUNTAIN LOCATION
Light Green	FENCE LINE
Light Purple	TAX RATE AREA
Light Yellow	DIMENSIONAL TEXT

Assessor's Parcel Numbers Shown in Circles.  
Assessor's Block Numbers Shown in Ellipses.

Book 106, Page 28  
Plumas County Assessor's Map